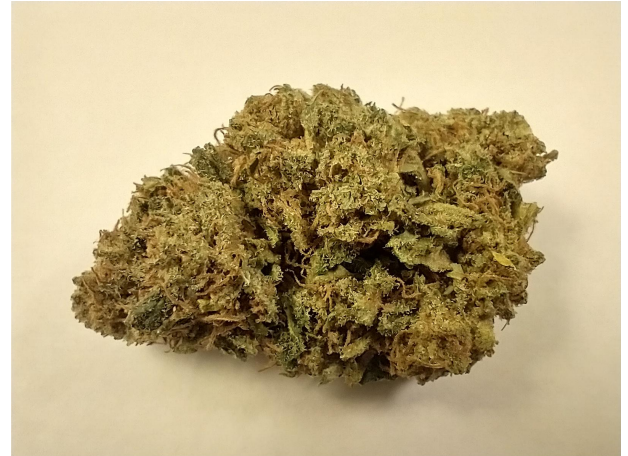


## Fields of Hemp

Sample Lifter

Strain

<b>&lt;LOQ</b>	<b>18.94%</b>	<b>22.52%</b>
$\Delta 9$ THC	Total CBD	<b>Total Cannabinoids</b>
<b>Not tested</b>	<b>Pass</b>	<b>225.2</b>
<b>Water Activity</b>	<b>9.06</b>	<b>mg / g Total Cannabinoids</b>
	<b>Moisture</b>	



Sample ID **24111360614**

Matrix Flower

Harvest/Prod Date

Report Created 11/7/2024

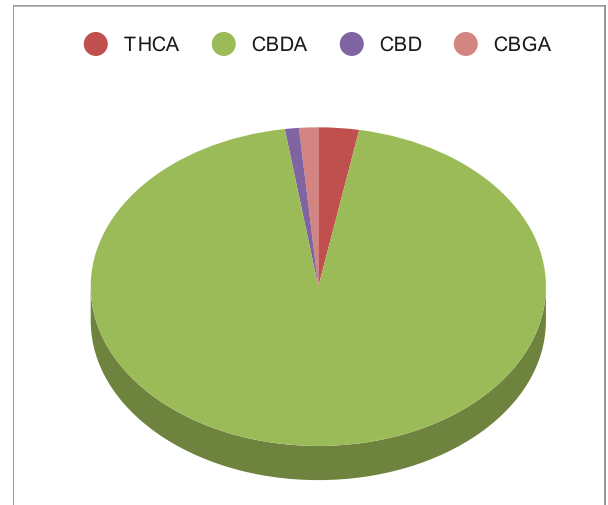
Results Valid Until 11/8/2025

Sample Extracted  
11/6/2024 12:15:00

Sample Analyzed  
11/7/2024 8:51

Method SOP LO001-R11


Cannabinoids	%Weight	mg/ gram	LOQ(% /w)
$\Delta 9$ THC	<LOQ	<LOQ)	0.06
THCA	0.65	6.5	0.06
Total THC (THCA*0.877)+9THC	0.57	5.7	0.06
CBDA	21.34	213.4	0.06
CBD	0.22	2.2	0.06
CBN	<LOQ	<LOQ)	0.06
$\Delta 8$ THC	<LOQ	<LOQ)	0.06
CBC	<LOQ	<LOQ)	0.06
CBGA	0.31	3.1	0.06
CBG	<LOQ	<LOQ)	0.06
CBDV	<LOQ	<LOQ)	0.06
CBDVA	<LOQ	<LOQ)	0.06
THCVA	<LOQ	<LOQ)	0.06
CBDQ	<LOQ	<LOQ)	0.06
HHC	<LOQ	<LOQ)	0.09



Total THC and Total CBD are calculated values per OAR 333-064-0100. Cannabinoid values for plant matter samples are reported on a dry weight basis. Water activity action level is 0.65Aw. LOQ= Limit of Quantitation. NR=Not Reported.

[Rogue Research Lab LLC](http://Rogue Research Lab LLC)  
[Rogue River, OR 97537](http://Rogue River, OR 97537) Tel. 541-582-1962

[rogueresearchlab.com](http://rogueresearchlab.com)

  
 Craig Berry - Lab Director  
 11/7/24

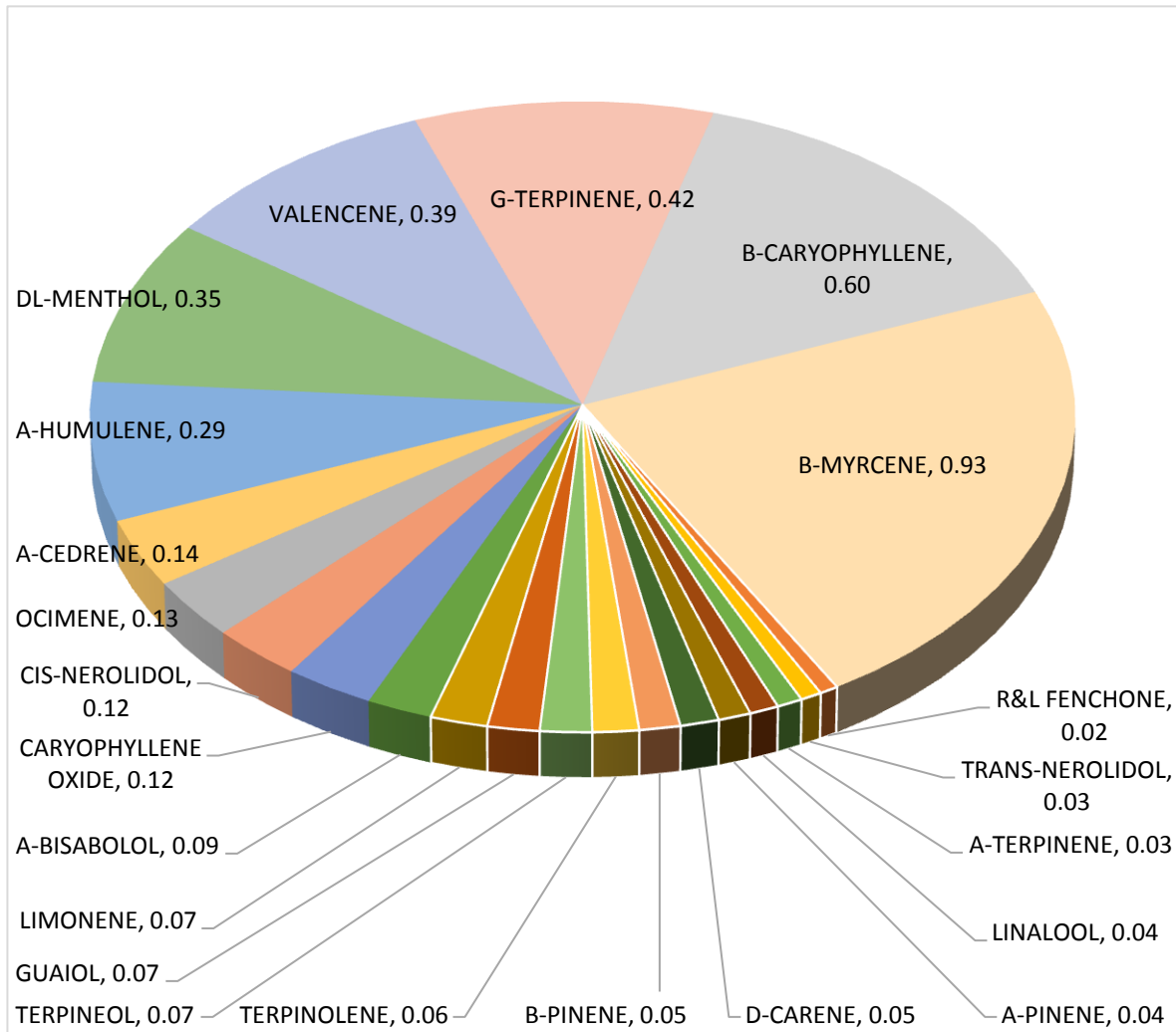
Results pertain to submitted samples only. Rogue Research Lab LLC makes no claims as to the consumer safety or other risks associated with any detected or non-detected amounts of any pesticides, solvents or other adulterants. This report shall not be reproduced, unless in its entirety, without written approval from Rogue Research Lab LLC. Samples were received in good condition and all QC samples met acceptance criteria of the method; data available upon request. For informational purposes only.



# Terpene Analysis

**Customer** Fields of Hemp  
**Sample Name** Lifter  
**File Name** 24111360614  
**Date/Time Extracted:** 11/06/2024 12:15  
**Date/Time Analyzed:** 11/7/2024 8:46  
**Analysis Method/SOP:** LO 001R11/RC082523

TESTED FOR : A-BISABOLOL, A-CEDRENE, A-HUMULENE, A-PHELLANDRENE, A-PINENE, A-TERPINENE, B-CARYOPHYLLENE, B-MYRCENE, BORNEOL, B-PINENE, CAMPHENE, CAMPHOR, CARYOPHYLLENE OXIDE, CEDROL, CIS-NEROLIDOL, D-CARENE, DL-MENTHOL, EUCALYPTOL, FARNESENE, R&L FENCHONE, FENCHYL ALCOHOL, GERANIOL, GERANYL ACETATE, G-TERPINENE, GUAJOL, ISOBORNEOL, ISOPULEGOL, LIMONENE, LINALOOL, NEROL, OCIMENE, P-CYMENE, PULEGONE, SABINENE, TERPINEOL, TERPINOLENE, TRANS-NEROLIDOL, TRANS-OCIMENE, VALENCENE.



  
Craig Berry - Lab Director 11/7/2024

Terpene total w/w% 4.12