

These test results are for Research and Development purposes only

Page 1 of 1

Fields of Hemp

Sample Lifter Oil

Strain

0.05% Δ9 THC	2.00% Total CBD	2.19% Total Cannabinoids
Not tested Water Activity	Not Tested Moisture	21.9 mg / g Total Cannabinoids

Sample ID **24101160529**

Matrix Tincture



Harvest/Prod Date

Report Created 10/15/2024

Results Valid Until

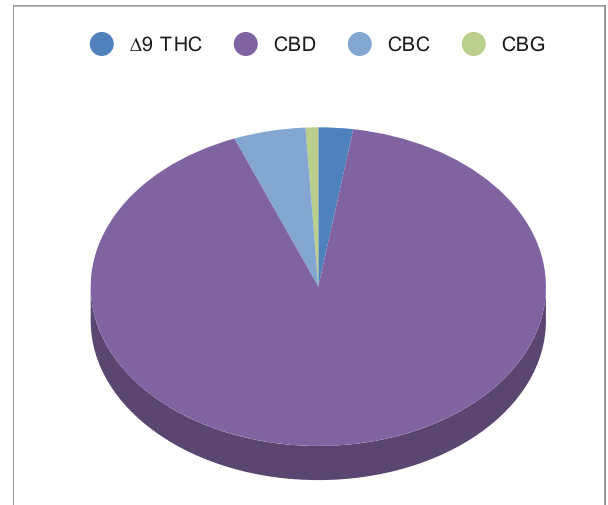
10/16/2025

Sample Extracted
10/14/2024 8:12:00

Sample Analyzed
10/14/2024 11:41

Method SOP LO001-R11


Cannabinoids	%Weight	mg/ gram	LOQ(% /w)
Δ9 THC	0.05	0.5	0.02
THCA	<LOQ	<LOQ)	0.02
Total THC (THCA*0.877)+9THC	0.05	0.5	0.02
CBDA	<LOQ	<LOQ)	0.02
CBD	2.00	20.0	0.02
CBN	<LOQ	<LOQ)	0.02
Δ8 THC	<LOQ	<LOQ)	0.02
CBC	0.11	1.1	0.02
CBGA	<LOQ	<LOQ)	0.02
CBG	<LOQ	<LOQ)	0.02
CBDV	<LOQ	<LOQ)	0.02
CBDVA	<LOQ	<LOQ)	0.02
THCVA	<LOQ	<LOQ)	0.02
CBDQ	<LOQ	<LOQ)	0.02
HHC	<LOQ	<LOQ)	0.04



Total THC and Total CBD are calculated values per OAR 333-064-0100. Cannabinoid values for plant matter samples are reported on a dry weight basis. Water activity action level is 0.65Aw. LOQ= Limit of Quantitation. NR=Not Reported.

Rogue Research Lab LLC
Rogue River, OR 97537 Tel. 541-582-1962

rogueresearchlab.com


 Craig Berry - Lab Director
 10/15/24

Results pertain to submitted samples only. Rogue Research Lab LLC makes no claims as to the consumer safety or other risks associated with any detected or non-detected amounts of any pesticides, solvents or other adulterants. This report shall not be reproduced, unless in its entirety, without written approval from Rogue Research Lab LLC. Samples were received in good condition and all QC samples met acceptance criteria of the method; data available upon request. For informational purposes only.