

## Fields of Hemp

Sample Sour Brulee

Strain

<b>0.08%</b>	<b>16.84%</b>	<b>20.56%</b>
$\Delta 9$ THC	Total CBD	<b>Total Cannabinoids</b>
<b>Not tested</b>	<b>Pass</b>	<b>205.6</b>
<b>Water Activity</b>	<b>7.00</b> <b>Moisture</b>	<b>mg / g Total Cannabinoids</b>



Sample ID **24080910436**

Matrix Flower

Harvest/Prod Date

Report Created 8/6/2024

Results Valid Until

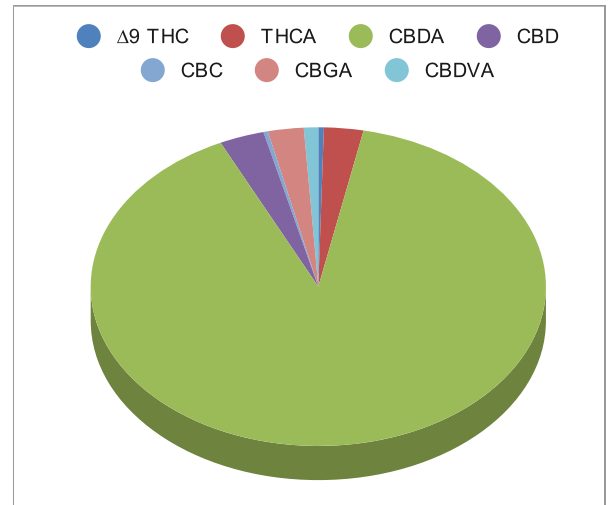
8/7/2025

Sample Extracted  
8/6/2024 7:45:00

Sample Analyzed  
8/6/2024 11:43

Method SOP LO001-R11


Cannabinoids	%Weight	mg/ gram	LOQ(% /w)
$\Delta 9$ THC	0.08	0.8	0.06
THCA	0.57	5.7	0.06
Total THC (THCA*0.877)+9THC	0.58	5.8	0.06
CBDA	18.45	184.5	0.06
CBD	0.66	6.6	0.06
CBN	<LOQ	<LOQ)	0.06
$\Delta 8$ THC	<LOQ	<LOQ)	0.06
CBC	0.06	0.6	0.06
CBGA	0.52	5.2	0.06
CBG	<LOQ	<LOQ)	0.06
CBDV	<LOQ	<LOQ)	0.06
CBDVA	0.21	2.1	0.06
THCVA	<LOQ	<LOQ)	0.06
CBDQ	<LOQ	<LOQ)	0.06
HHC	<LOQ	<LOQ)	0.09



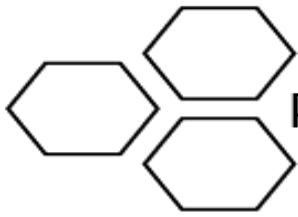
Total THC and Total CBD are calculated values per OAR 333-064-0100. Cannabinoid values for plant matter samples are reported on a dry weight basis. Water activity action level is 0.65Aw. LOQ= Limit of Quantitation. NR=Not Reported.

[Rogue Research Lab LLC](http://Rogue Research Lab LLC)  
Rogue River, OR 97537 Tel. 541-582-1962

[rogueresearchlab.com](http://rogueresearchlab.com)

  
Craig Berry - Lab Director  
8/6/24

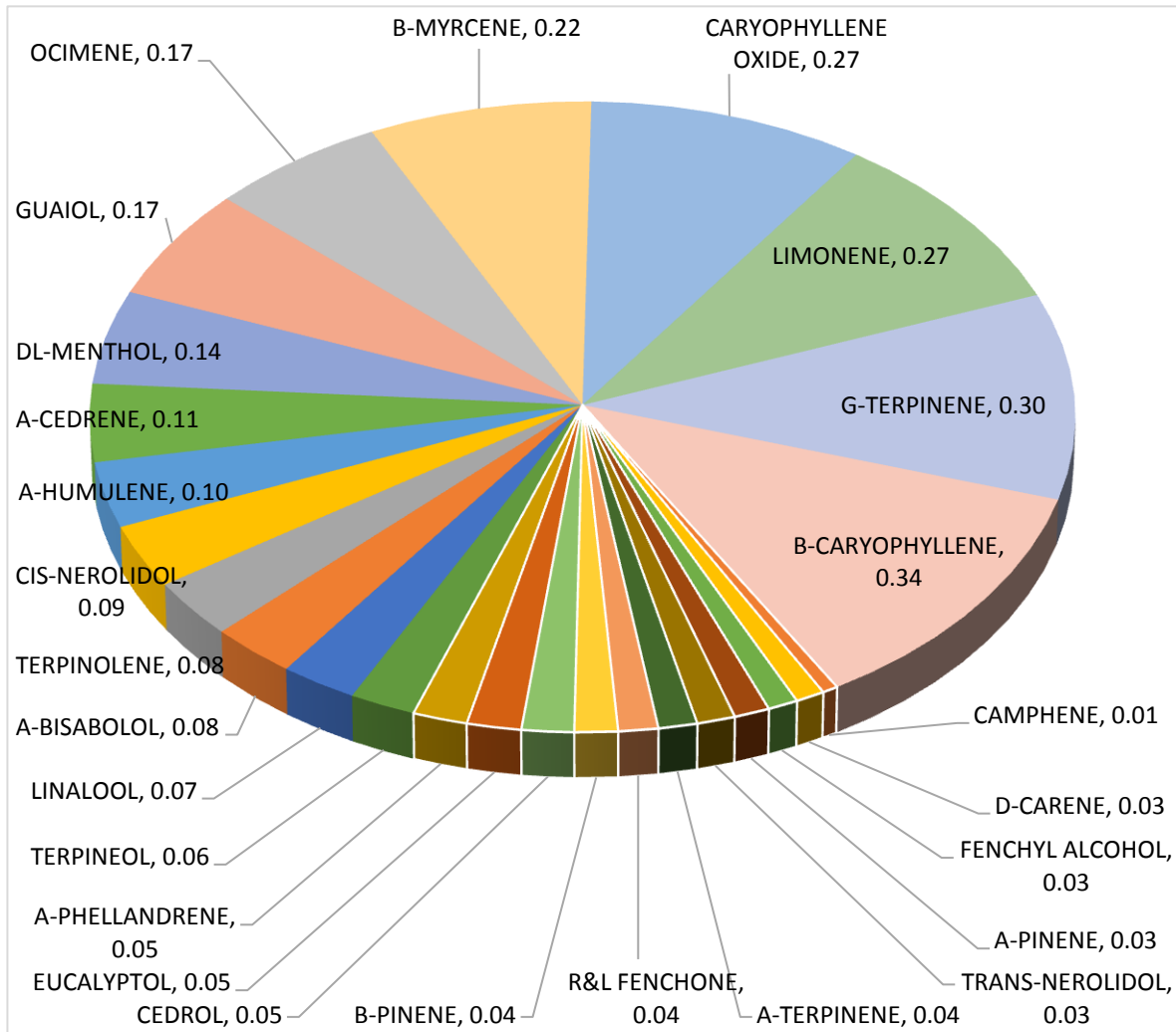
Results pertain to submitted samples only. Rogue Research Lab LLC makes no claims as to the consumer safety or other risks associated with any detected or non-detected amounts of any pesticides, solvents or other adulterants. This report shall not be reproduced, unless in its entirety, without written approval from Rogue Research Lab LLC. Samples were received in good condition and all QC samples met acceptance criteria of the method; data available upon request. For informational purposes only.



# Terpene Analysis

**Customer** Fields of Hemp  
**Sample Name** Sour Brulee  
**File Name** 24080910436  
**Date/Time Extracted:** 8/6/2024 07:45  
**Date/Time Analyzed:** 8/8/2024 17:12  
**Analysis Method/SOP:** LO 001R11/RC082523

TESTED FOR : A-BISABOLOL, A-CEDRENE, A-HUMULENE, A-PHELLANDRENE, A-PINENE, A-TERPINENE, B-CARYOPHYLLENE, B-MYRCENE, BORNEOL, B-PINENE, CAMPHENE, CAMPHOR, CARYOPHYLLENE OXIDE, CEDROL, CIS-NEROLIDOL, D-CARENE, DL-MENTHOL, EUCALYPTOL, FARNESENE, R&L FENCHONE, FENCHYL ALCOHOL, GERANIOL, GERANYL ACETATE, G-TERPINENE, GUAIOL, ISOBORNEOL, ISOPULEGOL, LIMONENE, LINALOOL, NEROL, OCIMENE, P-CYMENE, PULEGONE, SABINENE, TERPINEOL, TERPINOLENE, TRANS-NEROLIDOL, TRANS-OCIMENE, VALENCENE.



*Craig Berry*  
Craig Berry - Lab Director 8/9/2024

Terpene total w/w% 2.88