

Fields of Hemp

Sample Niko's Haze

Strain

<LOQ	20.20%	24.14%
$\Delta 9$ THC	Total CBD	Total Cannabinoids
Not tested	Pass	241.4
Water Activity	10.47 Moisture	mg / g Total Cannabinoids



Sample ID **23112131042**

Matrix Flower

Harvest/Prod Date

Report Created 12/4/2023

Results Valid Until

12/4/2024

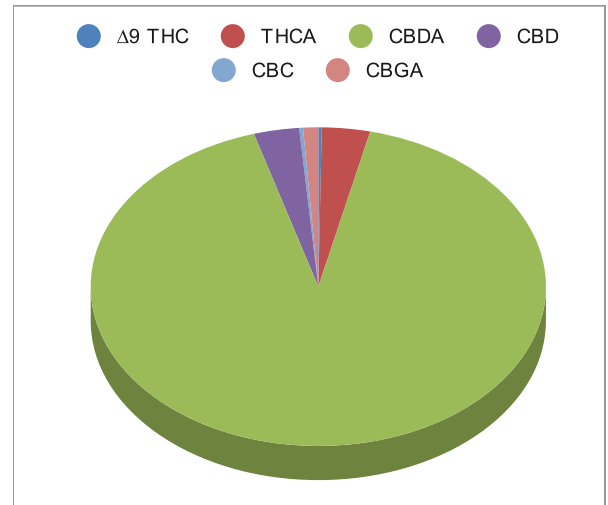
Sample Extracted
11/30/2023 10:31:00

Sample Analyzed
11/30/2023 14:37

Method SOP LO001-R11

Cannabinoids


	%Weight	mg/ gram	LOQ(% /w)
$\Delta 9$ THC	<LOQ	<LOQ)	0.06
THCA	0.83	8.3	0.06
Total THC (THCA*0.877)+9THC	0.78	7.8	0.06
CBDA	22.15	221.5	0.06
CBD	0.78	7.8	0.06
CBN	<LOQ	<LOQ)	0.06
$\Delta 8$ THC	<LOQ	<LOQ)	0.06
CBC	0.07	0.7	0.06
CBGA	0.26	2.6	0.06
CBG	<LOQ	<LOQ)	0.06
CBDV	<LOQ	<LOQ)	0.06
CBDVA	<LOQ	<LOQ)	0.06
THCVA	<LOQ	<LOQ)	0.06
CBDQ	<LOQ	<LOQ)	0.06
HHC	<LOQ	<LOQ)	0.09



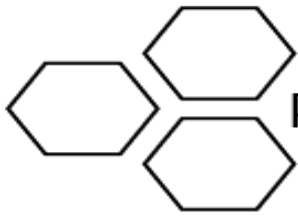
Total THC and Total CBD are calculated values per OAR 333-064-0100. Cannabinoid values for plant matter samples are reported on a dry weight basis. Water activity action level is 0.65Aw. LOQ= Limit of Quantitation. NR=Not Reported.

Rogue Research Lab LLC
Rogue River, OR 97537 Tel. 541-582-1962

rogueresearchlab.com


 Craig Berry - Lab Director
 12/4/23

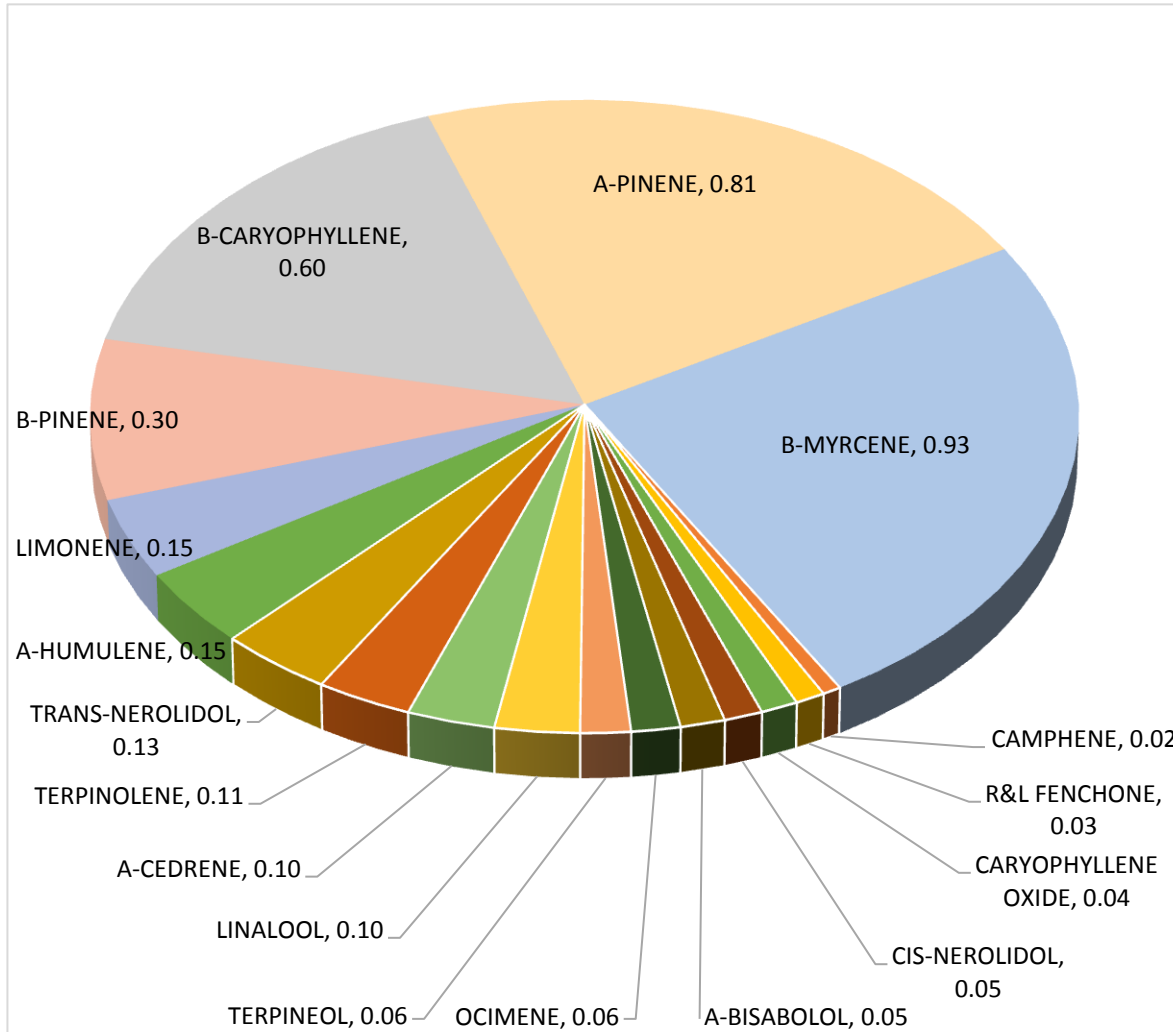
Results pertain to submitted samples only. Rogue Research Lab LLC makes no claims as to the consumer safety or other risks associated with any detected or non-detected amounts of any pesticides, solvents or other adulterants. This report shall not be reproduced, unless in its entirety, without written approval from Rogue Research Lab LLC. Samples were received in good condition and all QC samples met acceptance criteria of the method; data available upon request. For informational purposes only.



Terpene Analysis

Customer Fields of Hemp
Sample Name Niko's Haze
File Name 23112131042
Date/Time Extracted: 11/30/2023 10:31
Date/Time Analyzed: 12/3/2023 12:08
Analysis Method/SOP: LO 001R11/RC082523

TESTED FOR : A-BISABOOL, A-CEDRENE, A-HUMULENE, A-PHELLANDRENE, A-PINENE, A-TERPINENE, B-CARYOPHYLLENE, B-MYRCENE, BORNEOL, B-PINENE, CAMPHENE, CAMPHOR, CARYOPHYLLENE OXIDE, CEDROL, CIS-NEROLIDOL, D-CARENE, DL-MENTHOL, EUCALYPTOL, FARNESENE, R&L FENCHONE, FENCHYL ALCOHOL, GERANIOL, GERANYL ACETATE, G-TERPINENE, GUAJOL, ISOBORNEOL, ISOPULEGOL, LIMONENE, LINALOOL, NEROL, OCIMENE, P-CYMENE, PULEGONE, SABINENE, TERPINEOL, TERPINOLENE, TRANS-NEROLIDOL, TRANS-OCIMENE, VALENCENE.



Craig Berry
Craig Berry - Lab Director

12/4/2023

Terpene total w/w% 3.70