

## Fields of Hemp

Sample Bubba Kush

Strain

<b>&lt;LOQ</b>	<b>15.18%</b>	<b>18.42%</b>
$\Delta 9$ THC	Total CBD	<b>Total Cannabinoids</b>
<b>Not tested</b>	<b>Pass</b>	<b>184.2</b>
<b>Water Activity</b>	<b>9.16</b>	<b>mg / g Total Cannabinoids</b>
	<b>Moisture</b>	



Sample ID **23112101020**

Matrix Flower

Harvest/Prod Date

Report Created 11/25/2023

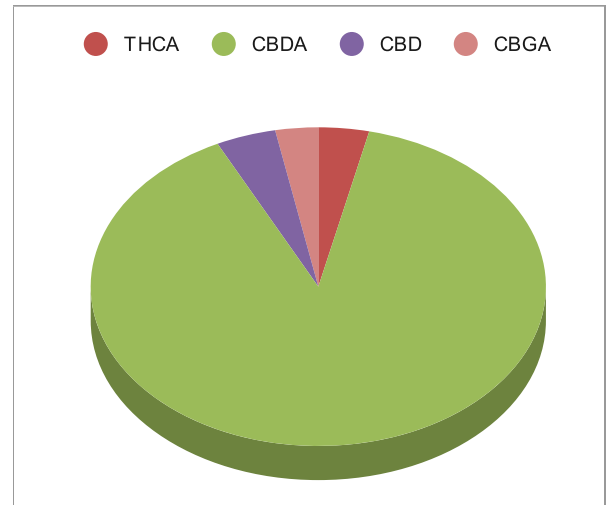
Results Valid Until 11/25/2024

Sample Extracted  
11/24/2023 9:12:00

Sample Analyzed  
11/24/2023 11:31

Method SOP LO001-R11


Cannabinoids	%Weight	mg/ gram	LOQ(% /w)
$\Delta 9$ THC	<LOQ	<LOQ)	0.06
THCA	0.66	6.6	0.06
Total THC (THCA*0.877)+9THC	0.58	5.8	0.06
CBDA	16.41	164.1	0.06
CBD	0.78	7.8	0.06
CBN	<LOQ	<LOQ)	0.06
$\Delta 8$ THC	<LOQ	<LOQ)	0.06
CBC	<LOQ	<LOQ)	0.06
CBGA	0.56	5.6	0.06
CBG	<LOQ	<LOQ)	0.06
CBDV	<LOQ	<LOQ)	0.06
CBDVA	<LOQ	<LOQ)	0.06
THCVA	<LOQ	<LOQ)	0.06
CBDQ	<LOQ	<LOQ)	0.06
HHC	<LOQ	<LOQ)	0.09



Total THC and Total CBD are calculated values per OAR 333-064-0100. Cannabinoid values for plant matter samples are reported on a dry weight basis. Water activity action level is 0.65Aw. LOQ= Limit of Quantitation. NR=Not Reported.

[Rogue Research Lab LLC](http://Rogue Research Lab LLC)  
Rogue River, OR 97537 Tel. 541-582-1962

[rogueresearchlab.com](http://rogueresearchlab.com)

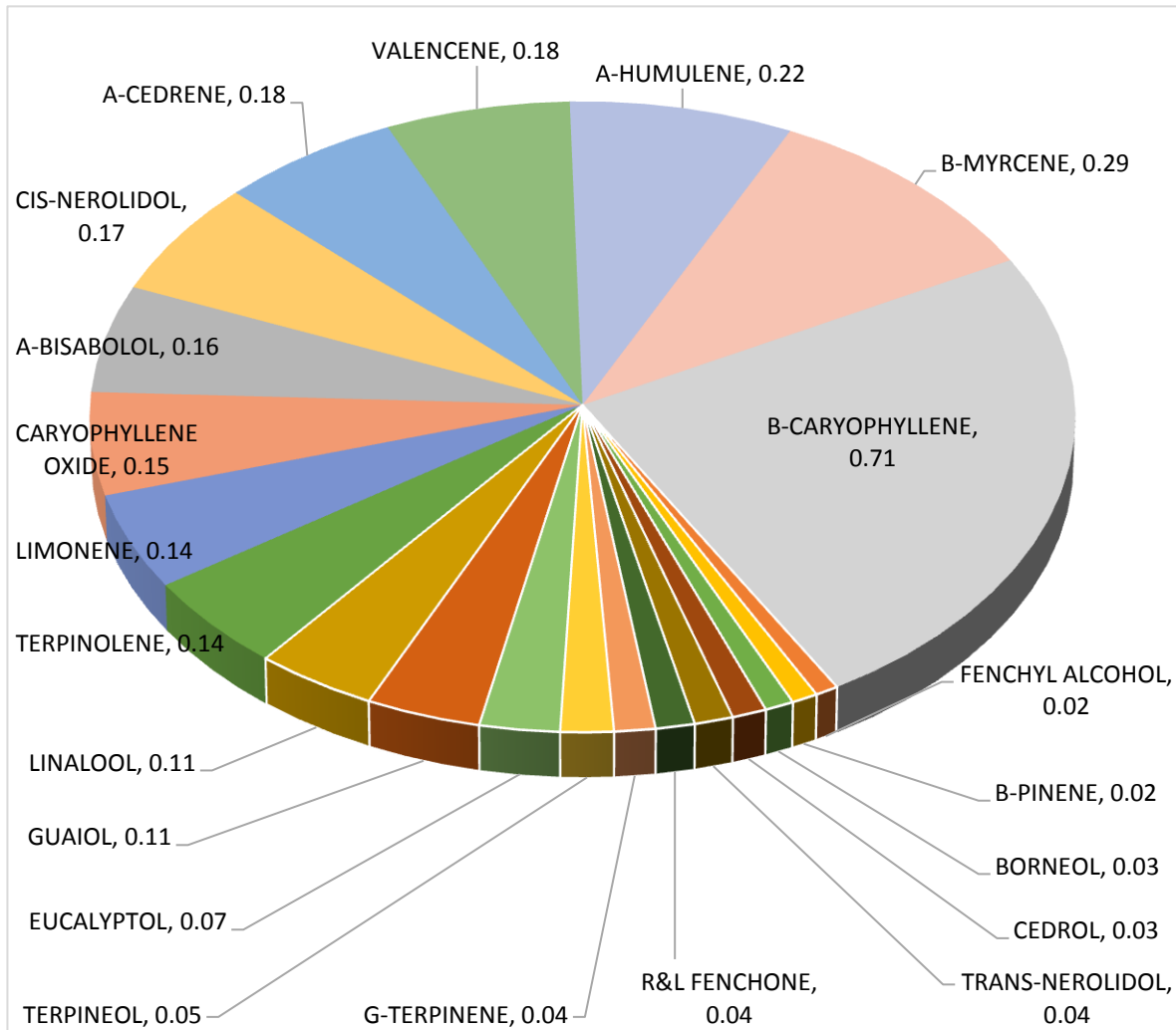
  
Craig Berry - Lab Director  
11/25/23



# Terpene Analysis

**Customer** Fields of Hemp  
**Sample Name** Bubba Kush  
**File Name** 23112101020  
**Date/Time Extracted:** 11/24/2023 09:12  
**Date/Time Analyzed:** 11/26/2023 11:03  
**Analysis Method/SOP:** LO 001R11/RC082523

TESTED FOR : A-BISABOLOL, A-CEDRENE, A-HUMULENE, A-PHELLANDRENE, A-PINENE, A-TERPINENE, B-CARYOPHYLLENE, B-MYRCENE, BORNEOL, B-PINENE, CAMPHENE, CAMPHOR, CARYOPHYLLENE OXIDE, CEDROL, CIS-NEROLIDOL, D-CARENE, DL-MENTHOL, EUCALYPTOL, FARNESENE, R&L FENCHONE, FENCHYL ALCOHOL, GERANIOL, GERANYL ACETATE, G-TERPINENE, GUAIIOL, ISOBORNEOL, ISOPULEGOL, LIMONENE, LINALOOL, NEROL, OCIMENE, P-CYMENE, PULEGONE, SABINENE, TERPINEOL, TERPINOLENE, TRANS-NEROLIDOL, TRANS-OCIMENE, VALENCENE.



*Craig Berry*  
Craig Berry - Lab Director 11/26/2023

Terpene total w/w% 2.92