

Fields of Hemp

Sample Sour Glue

Strain

<LOQ	16.89%	20.10%
$\Delta 9$ THC	Total CBD	Total Cannabinoids
Not tested	Pass	201.0
Water Activity	9.03 Moisture	mg / g Total Cannabinoids



Sample ID **23091900911**

Matrix Flower

Harvest/Prod Date

Report Created 10/3/2023

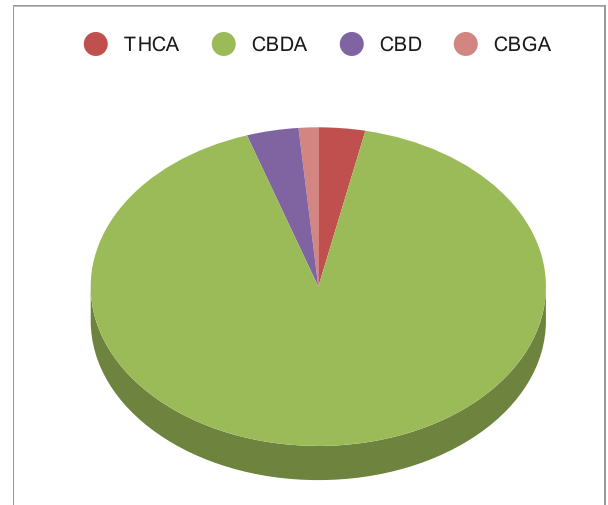
Results Valid Until 10/3/2024

Sample Extracted
10/2/2023 13:56:00

Sample Analyzed
10/2/2023 15:37

Method SOP LO001-R11


Cannabinoids	%Weight	mg/ gram	LOQ(% /w)
$\Delta 9$ THC	<LOQ	<LOQ)	0.06
THCA	0.67	6.7	0.06
Total THC (THCA*0.877)+9THC	0.58	5.8	0.11
CBDA	18.41	184.1	0.06
CBD	0.74	7.4	0.06
CBN	<LOQ	<LOQ)	0.06
$\Delta 8$ THC	<LOQ	<LOQ)	0.06
CBC	<LOQ	<LOQ)	0.06
CBGA	0.28	2.8	0.06
CBG	<LOQ	<LOQ)	0.06
CBDV	<LOQ	<LOQ)	0.06
CBDVA	<LOQ	<LOQ)	0.06
THCVA	<LOQ	<LOQ)	0.06
CBDQ	<LOQ	<LOQ)	0.06
HHC	<LOQ	<LOQ)	0.09



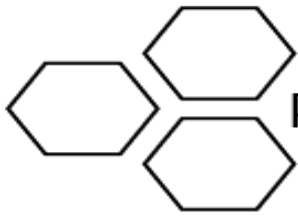
Total THC and Total CBD are calculated values per OAR 333-064-0100. Cannabinoid values for plant matter samples are reported on a dry weight basis. Water activity action level is 0.65Aw. LOQ= Limit of Quantitation. NR=Not Reported.

Rogue Research Lab LLC
218 E. Main Street, Rogue River, OR 97537
Tel. 541-582-1962

rogueresearchlab.com


 Craig Berry - Lab Director
 10/3/23

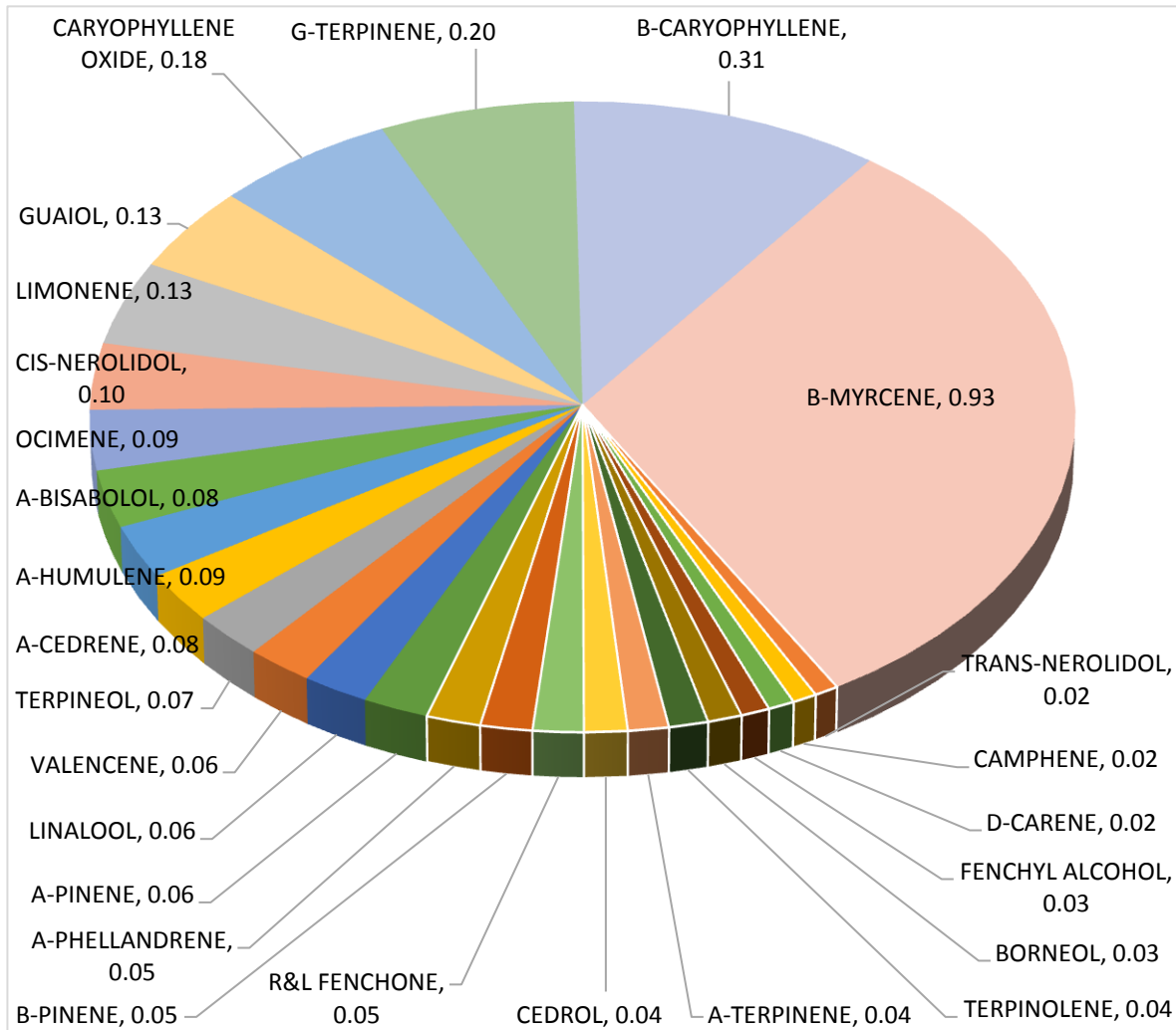
Results pertain to submitted samples only. Rogue Research Lab LLC makes no claims as to the consumer safety or other risks associated with any detected or non-detected amounts of any pesticides, solvents or other adulterants. This report shall not be reproduced, unless in its entirety, without written approval from Rogue Research Lab LLC. Samples were received in good condition and all QC samples met acceptance criteria of the method; data available upon request. For informational purposes only.



Terpene Analysis

Customer Fields of Hemp
Sample Name Sour Glue
File Name 2309190911
Date/Time Extracted: 10/2/2023 13:56
Date/Time Analyzed: 10/2/2023 18:27
Analysis Method/SOP: LO 001R11/RC082523

TESTED FOR : A-BISABOLOL, A-CEDRENE, A-HUMULENE, A-PHELLANDRENE, A-PINENE, A-TERPINENE, B-CARYOPHYLLENE, B-MYRCENE, BORNEOL, B-PINENE, CAMPHENE, CAMPHOR, CARYOPHYLLENE OXIDE, CEDROL, CIS-NEROLIDOL, D-CARENE, DL-MENTHOL, EUCALYPTOL, FARNESENE, R&L FENCHONE, FENCHYL ALCOHOL, GERANIOL, GERANYL ACETATE, G-TERPINENE, GUAJOL, ISOBORNEOL, ISOPULEGOL, LIMONENE, LINALOOL, NEROL, OCIMENE, P-CYMENE, PULEGONE, SABINENE, TERPINEOL, TERPINOLENE, TRANS-NEROLIDOL, TRANS-OCIMENE, VALENCENE.



Craig Berry
Craig Berry - Lab Director 10/3/2023

Terpene total w/w% 2.97