

## Fields of Hemp

Sample Lemon Octane

Strain

<b>0.08%</b>	<b>20.73%</b>	<b>26.02%</b>
Δ9 THC	Total CBD	<b>Total Cannabinoids</b>
<b>Not tested</b>	<b>Pass</b>	<b>260.2</b>
<b>Water Activity</b>	<b>8.43</b>	<b>mg / g Total Cannabinoids</b>
	<b>Moisture</b>	



Sample ID **23102000945**

Matrix Flower

Harvest/Prod Date

Report Created 10/16/2023

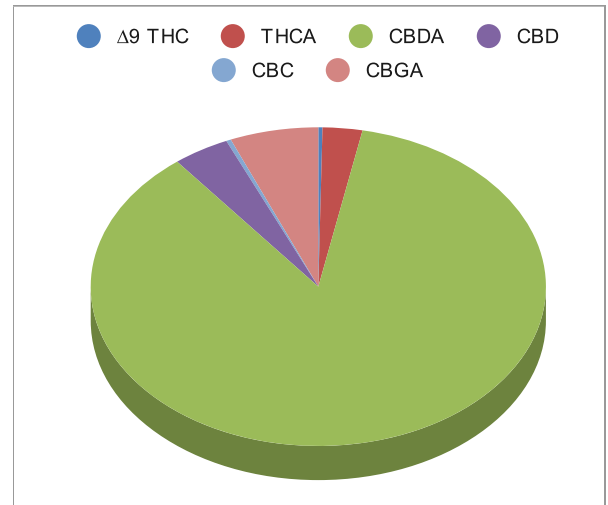
Results Valid Until 10/16/2024

Sample Extracted  
10/16/2023 8:21:00

Sample Analyzed  
10/16/2023 10:54

Method SOP LO001-R11


Cannabinoids	%Weight	mg/ gram	LOQ(% /w)
Δ9 THC	0.08	0.8	0.06
THCA	0.73	7.3	0.06
Total THC (THCA*0.877)+9THC	0.72	7.2	0.11
CBDA	22.44	224.4	0.06
CBD	1.05	10.5	0.06
CBN	<LOQ	<LOQ)	0.06
Δ8 THC	<LOQ	<LOQ)	0.06
CBC	0.09	0.9	0.06
CBGA	1.64	16.4	0.06
CBG	<LOQ	<LOQ)	0.06
CBDV	<LOQ	<LOQ)	0.06
CBDVA	<LOQ	<LOQ)	0.06
THCVA	<LOQ	<LOQ)	0.06
CBDQ	<LOQ	<LOQ)	0.06
HHC	<LOQ	<LOQ)	0.09



Total THC and Total CBD are calculated values per OAR 333-064-0100. Cannabinoid values for plant matter samples are reported on a dry weight basis. Water activity action level is 0.65Aw. LOQ= Limit of Quantitation. NR=Not Reported.

[Rogue Research Lab LLC](http://Rogue Research Lab LLC)  
[218 E. Main Street, Rogue River, OR 97537](http://218 E. Main Street, Rogue River, OR 97537)  
[Tel. 541-582-1962](http://Tel. 541-582-1962)

[rogue-research-lab.com](http://rogue-research-lab.com)

  
 Craig Berry - Lab Director  
 10/16/23

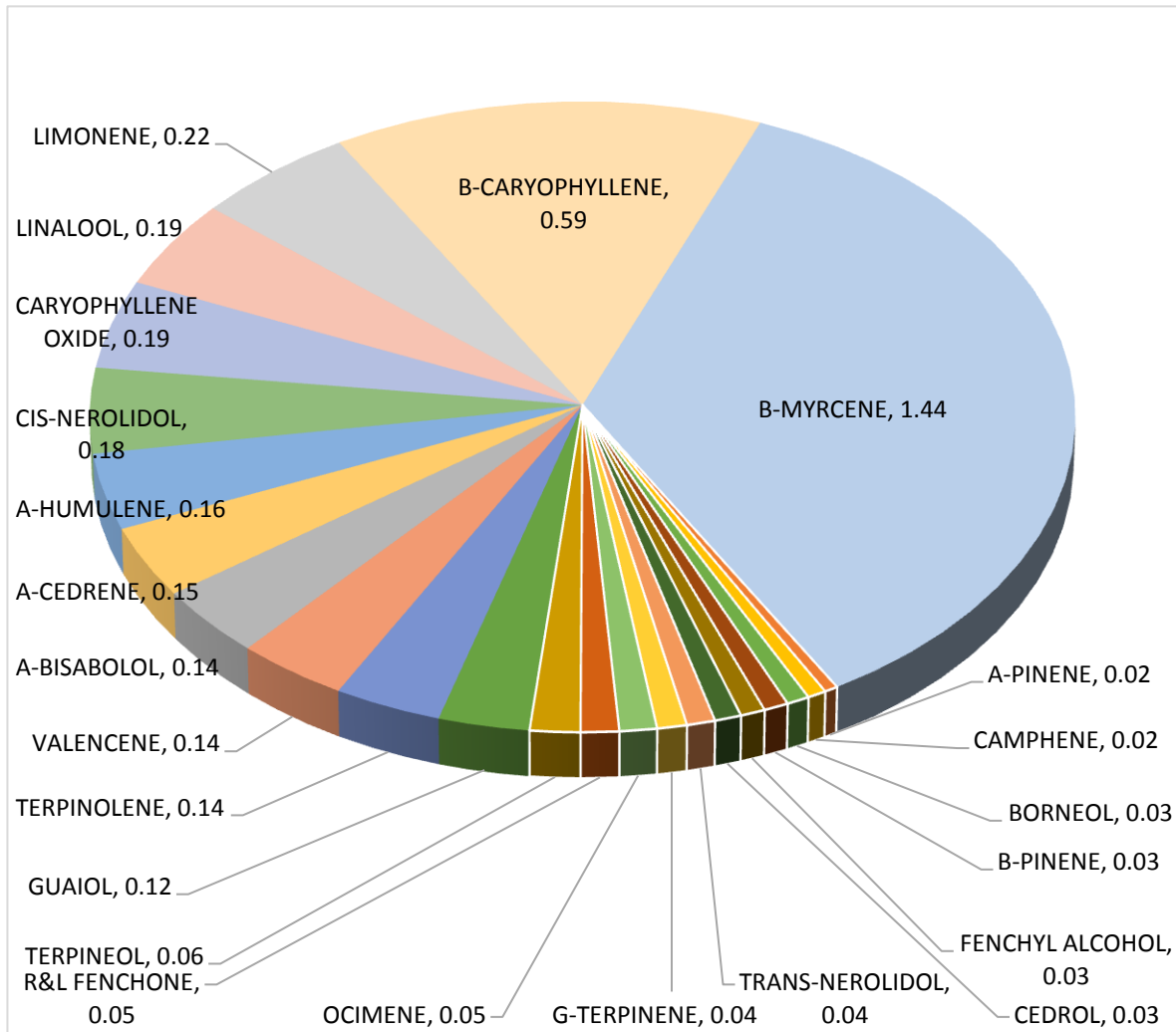
Results pertain to submitted samples only. Rogue Research Lab LLC makes no claims as to the consumer safety or other risks associated with any detected or non-detected amounts of any pesticides, solvents or other adulterants. This report shall not be reproduced, unless in its entirety, without written approval from Rogue Research Lab LLC. Samples were received in good condition and all QC samples met acceptance criteria of the method; data available upon request. For informational purposes only.



# Terpene Analysis

**Customer** Fields of Hemp  
**Sample Name** Lemon Octane  
**File Name** 23102000945  
**Date/Time Extracted:** 10/16/2023 08:21  
**Date/Time Analyzed:** 10/16/2023 12:07  
**Analysis Method/SOP:** LO 001R11/RC082523

TESTED FOR : A-BISABOLOL, A-CEDRENE, A-HUMULENE, A-PHELLANDRENE, A-PINENE, A-TERPINENE, B-CARYOPHYLLENE, B-MYRCENE, BORNEOL, B-PINENE, CAMPHENE, CAMPHOR, CARYOPHYLLENE OXIDE, CEDROL, CIS-NEROLIDOL, D-CARENE, DL-MENTHOL, EUCALYPTOL, FARNESENE, R&L FENCHONE, FENCHYL ALCOHOL, GERANIOL, GERANYL ACETATE, G-TERPINENE, GUAIOL, ISOBORNEOL, ISOPULEGOL, LIMONENE, LINALOOL, NEROL, OCIMENE, P-CYMENE, PULEGONE, SABINENE, TERPINEOL, TERPINOLENE, TRANS-NEROLIDOL, TRANS-OCIMENE, VALENCENE.



*Craig Berry*  
Craig Berry - Lab Director 10/16/2023

Terpene total w/w% 4.06