

Fields of Hemp

Sample Pink Panther

Strain

<LOQ	15.10%	18.24%
$\Delta 9$ THC	Total CBD	Total Cannabinoids
Not tested	Pass	182.4
Water Activity	10.36	mg / g Total Cannabinoids
	Moisture	



Sample ID

22110940510

Matrix

Flower

Metric

Harvest/Prod Date

Report Created

11/12/2022

Results Valid Until

11/12/2023

Sample Extracted

11/10/2022 8:15

Sample Analyzed

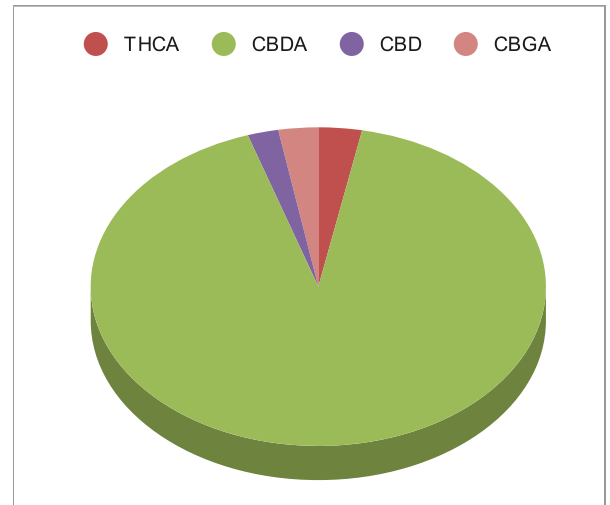
11/10/2022 20:33

Method SOP LO001-R10

Cannabinoids


%Weight mg/ gram LOQ(% /w)

Cannabinoids	%Weight	mg/ gram	LOQ(% /w)
$\Delta 9$ THC	<LOQ	<LOQ)	0.06
THCA	0.56	5.6	0.06
Total THC ($_{THCA} \times 0.877$)+ $\Delta 9$ THC	0.49	4.9	0.11
CBDA	16.76	167.6	0.06
CBD	0.40	4.0	0.06
CBN	<LOQ	<LOQ)	0.06
$\Delta 8$ THC	<LOQ	<LOQ)	0.06
‡ CBC	<LOQ	<LOQ)	0.06
‡ CBGA	0.52	5.2	0.06
‡ CBG	<LOQ	<LOQ)	0.06
‡ CBDV	<LOQ	<LOQ)	0.06
‡ CBDVA	<LOQ	<LOQ)	0.06
‡ THCVA	<LOQ	<LOQ)	0.06
‡ CBDQ	<LOQ	<LOQ)	0.06

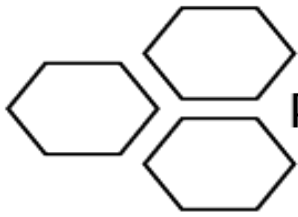


Total THC and Total CBD are calculated values per OAR 333-064-0100. Cannabinoid values for plant matter samples are reported on a dry weight basis. Water activity action level is 0.65Aw. LOQ= Limit of Quantitation. NR=Not Reported.

Rogue Research Lab LLC
 218 E. Main Street, Rogue River, OR 97537
 Tel. 541-582-1962
 ORELAP 4107 OLCC 101050708B
rogue-research-lab.com


 Craig Berry - Lab Director
 11/12/22

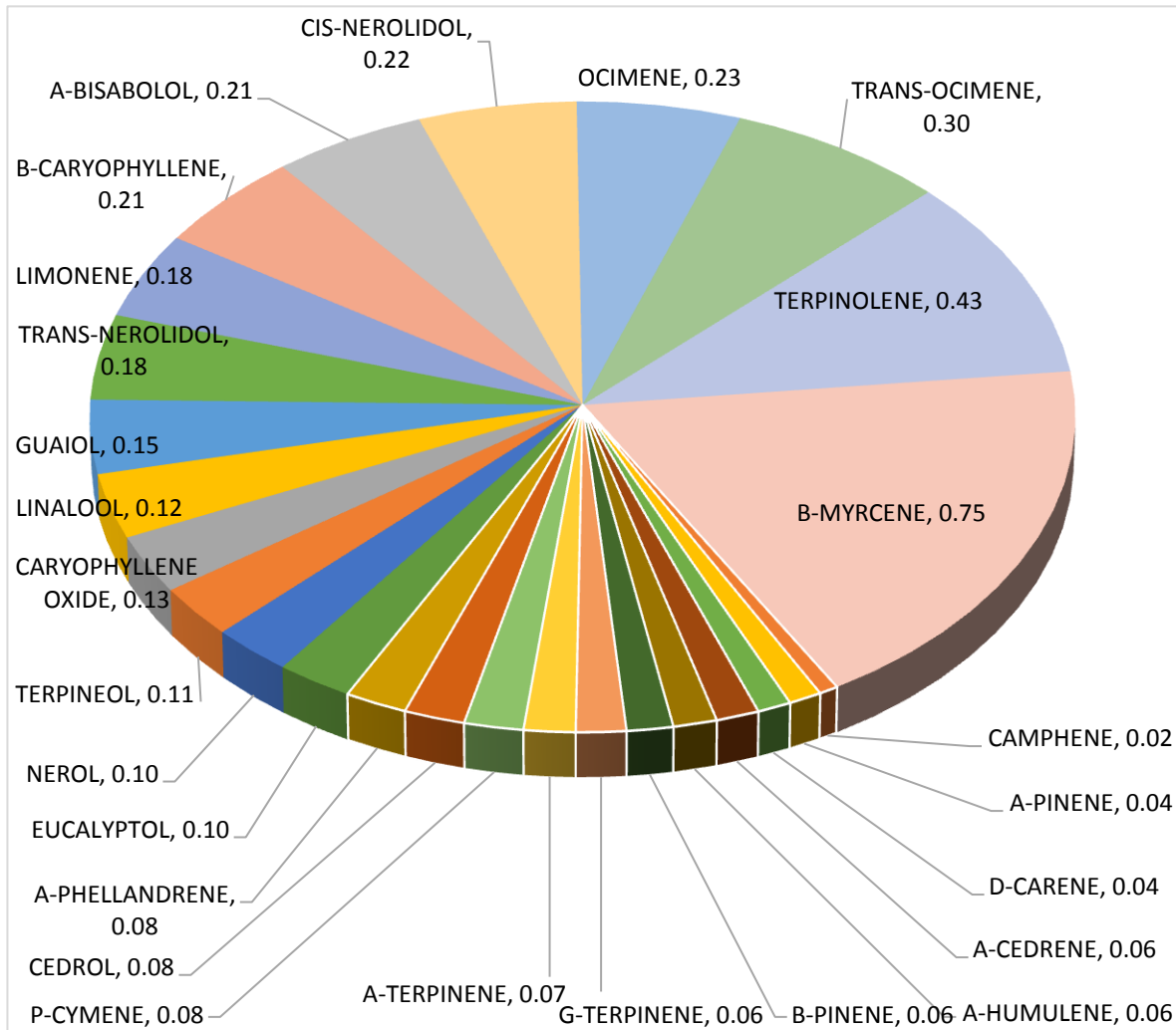
Results pertain to submitted samples only. Rogue Research Lab LLC makes no claims as to the consumer safety or other risks associated with any detected or non-detected amounts of any pesticides, solvents or other adulterants. This report shall not be reproduced, unless in its entirety, without written approval from Rogue Research Lab LLC. Samples were received in good condition and all QC samples met acceptance criteria of the method; data available upon request. Analytes accompanied by dagger (‡) are not within the scope of accreditation and are for informational purposes only.



Terpene Analysis

Customer Fields of Hemp
Sample Name Pink Panther
File Name 22110940510
Date/Time Extracted: 11/10/2022 08:15
Date/Time Analyzed: 11/11/2022 1:10
Analysis Method/SOP: LO 001R10/4-22RC1122

TESTED FOR : A-BISABOLOL, A-CEDRENE, A-HUMULENE, A-PHELLANDRENE, A-PINENE, A-TERPINENE, B-CARYOPHYLLENE, B-MYRCENE, BORNEOL, B-PINENE, CAMPHENE, CAMPHOR, CARYOPHYLLENE OXIDE, CEDROL, CIS-NEROLIDOL, D-CARENE, DL-MENTHOL, EUCALYPTOL, FARNESENE, R&L FENCHONE, FENCHYL ALCOHOL, GERANIOL, GERANYL ACETATE, G-TERPINENE, GUAJOL, ISOBORNEOL, ISOPULEGOL, LIMONENE, LINALOOL, NEROL, OCIMENE, P-CYMENE, PULEGONE, SABINENE, TERPINEOL, TERPINOLENE, TRANS-NEROLIDOL, TRANS-OCIMENE, VALENCENE.



Craig Berry
Craig Berry - Lab Director

11/12/2022

Terpene total w/w% 4.09