

Fields of Hemp

Sample JJ's Dream

Strain

| | | |
|-----------------------|-----------------|----------------------------------|
| 0.07% | 15.79% | 19.00% |
| $\Delta 9$ THC | Total CBD | Total Cannabinoids |
| Not tested | Pass | 190.0 |
| Water Activity | 10.52 | mg / g Total Cannabinoids |
| | Moisture | |



Sample ID

22110940508

Matrix

Flower

Metric

Harvest/Prod Date

Report Created

11/11/2022

Results Valid Until

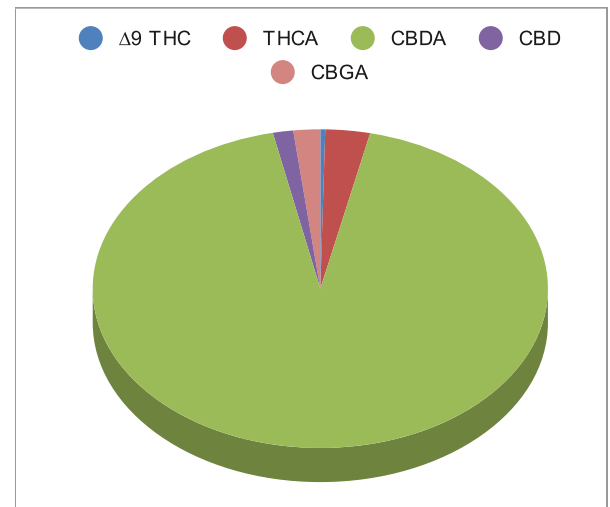
11/11/2023

Sample Extracted
11/10/2022 8:15

Sample Analyzed
11/10/2022 20:09


Method SOP LO001-R10

| Cannabinoids | %Weight | mg/ gram | LOQ(% /w) |
|-----------------------------|---------|----------|-----------|
| $\Delta 9$ THC | 0.07 | 0.7 | 0.06 |
| THCA | 0.60 | 6.0 | 0.06 |
| Total THC (THCA*0.877)+9THC | 0.59 | 5.9 | 0.11 |
| CBDA | 17.69 | 176.9 | 0.06 |
| CBD | 0.27 | 2.7 | 0.06 |
| CBN | <LOQ | <LOQ) | 0.06 |
| $\Delta 8$ THC | <LOQ | <LOQ) | 0.06 |
| ‡ CBC | <LOQ | <LOQ) | 0.06 |
| ‡ CBGA | 0.36 | 3.6 | 0.06 |
| ‡ CBG | <LOQ | <LOQ) | 0.06 |
| ‡ CBDV | <LOQ | <LOQ) | 0.06 |
| ‡ CBDVA | <LOQ | <LOQ) | 0.06 |
| ‡ THCVA | <LOQ | <LOQ) | 0.06 |
| ‡ CBDQ | <LOQ | <LOQ) | 0.06 |



Total THC and Total CBD are calculated values per OAR 333-064-0100. Cannabinoid values for plant matter samples are reported on a dry weight basis. Water activity action level is 0.65Aw. LOQ= Limit of Quantitation. NR=Not Reported.

[Rogue Research Lab LLC](#)
[218 E. Main Street, Rogue River, OR 97537](#)
 Tel. 541-582-1962
[ORELAP 4107](#) [OLCC 101050708B](#)
[rogue-research-lab.com](#)

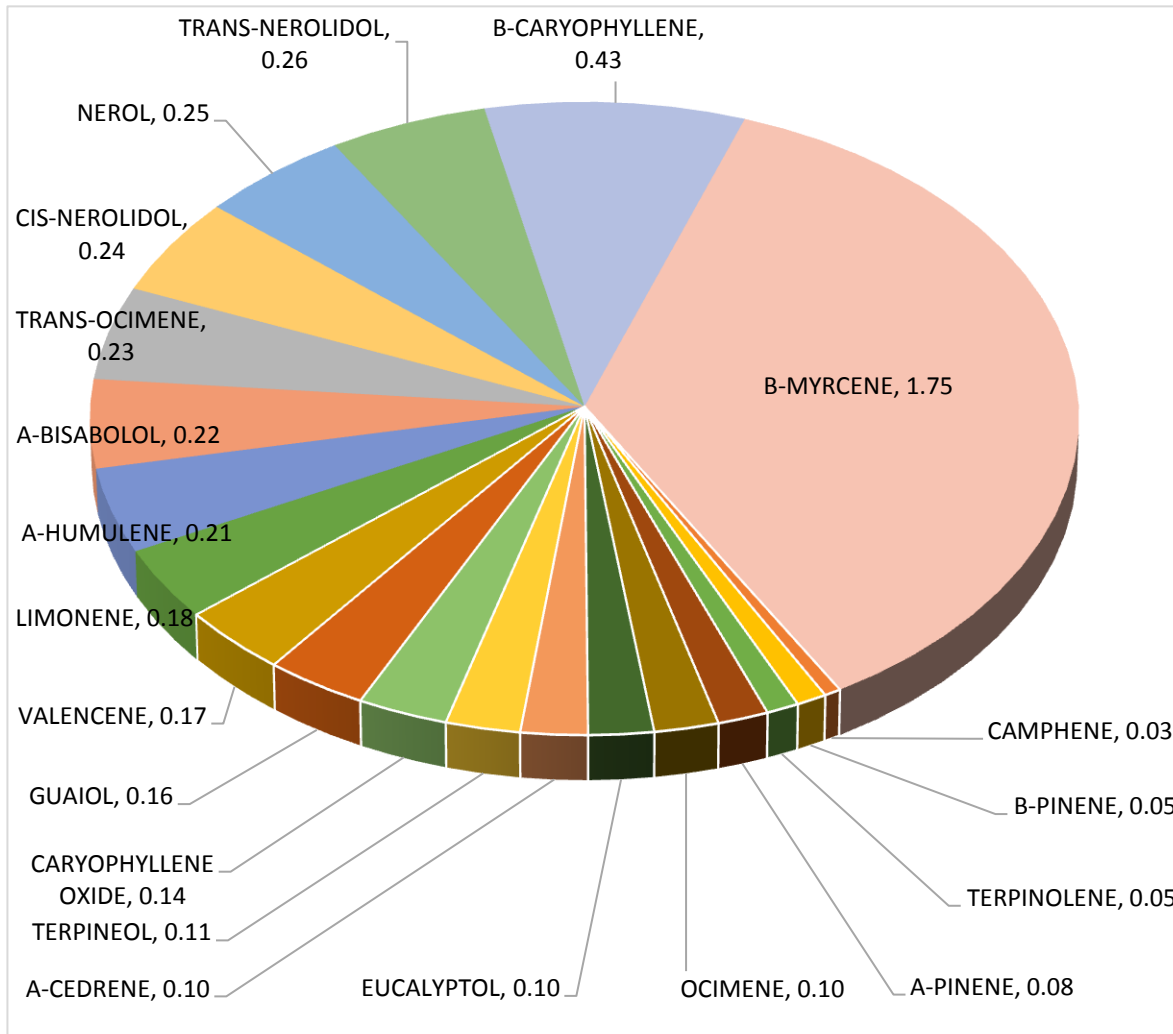

 Craig Berry - Lab Director
 11/11/22



Terpene Analysis

Customer Fields of Hemp
Sample Name JJ's Dream
File Name 22110940508
Date/Time Extracted: 11/10/2022 08:15
Date/Time Analyzed: 11/10/2022 23:51
Analysis Method/SOP: LO 001R10/4-22RC1122

TESTED FOR : A-BISABOLOL, A-CEDRENE, A-HUMULENE, A-PHELLANDRENE, A-PINENE, A-TERPINENE, B-CARYOPHYLLENE, B-MYRCENE, BORNEOL, B-PINENE, CAMPHENE, CAMPHOR, CARYOPHYLLENE OXIDE, CEDROL, CIS-NEROLIDOL, D-CARENE, DL-MENTHOL, EUCALYPTOL, FARNESENE, R&L FENCHONE, FENCHYL ALCOHOL, GERANIOL, GERANYL ACETATE, G-TERPINENE, GUAJOL, ISOBORNEOL, ISOPULEGOL, LIMONENE, LINALOOL, NEROL, OCIMENE, P-CYMENE, PULEGONE, SABINENE, TERPINEOL, TERPINOLENE, TRANS-NEROLIDOL, TRANS-OCIMENE, VALENCENE.



Craig Berry
Craig Berry - Lab Director

11/12/2022

Terpene total w/w% 4.84