

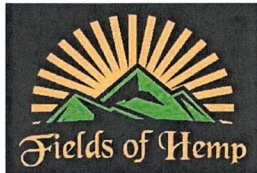
**NOTICE TO LAW ENFORCEMENT:**

**LEGAL NOTICE:** This package contains hemp that was cultivated in Oregon pursuant to a license issued by the Oregon Department of Agriculture. Though hemp may look like marijuana, it is legally distinct. Both the terms "marijuana" and "hemp" describe the cannabis plant. Marijuana is classified as a Schedule 1 substance under the Controlled Substances Act ("CSA") 21.

In turn, the Agriculture Improvement Act of 2018 (the "2018 Farm Bill") defines hemp as follows:

The term "hemp" means the plant *Cannabis sativa* L., and any part of that plant, including the seeds thereof and all derivatives, extracts, cannabinoids, isomers, acids, salts, and salts of isomers, whether growing or not, with a delta-9 tetrahydrocannabinol concentration of not more than 0.3% percent on a dry weight basis.

2018 Farm Bill, Section 297A. The 2018 Farm Bill amends the CSA's definition of marijuana to exclude hemp.id. at Section 12619. The 2018 Farm Bill also prohibits states or Indian tribes from prohibiting the interstate transport or delivery of hemp.id. Section 10114.



**FIELDS OF HEMP LLC.**

Form 1014 Rev 04/18  
Oregon Department of Agriculture  
635 Capitol St. NL Suite 100  
Salem, OR 97301-2532  
(503) 986-4550

**BUSINESS LOCATION:**

FIELDS OF HEMP LLC.  
SCOTT AND MICHELLE FIELDS  
491 PENNY LANE  
GRANTS PASS, OR 97527

<u>LICENSE NUMBER:</u>	<u>DATE ISSUED:</u>	<u>DATE EXPIRES:</u>	<u>LICENSE:</u>
AG-R1042363IHG	05/07/22	12/31/2022	HEMP GROWER REGISTRATION

"I certify that all information furnished in this letter and supporting documents are accurate, truthful, and complete. I understand that anyone who furnishes false or misleading information or omits information relating to this certification may be subject to criminal and/or civil penalties, including fines and imprisonment".

Fields of Hemp LLC.

  
Scott Fields/Owner

  
Michelle Fields/Owner

## Fields of Hemp

Sample Cakeberry Bruleee

Strain

<b>0.09%</b>	<b>15.79%</b>	<b>19.44%</b>
$\Delta 9$ THC	Total CBD	<b>Total</b> <b>Cannabinoids</b>
<b>Not tested</b>	<b>Pass</b>	<b>194.4</b>
<b>Water Activity</b>	<b>6.10</b> <b>Moisture</b>	<b>mg / g Total</b> <b>Cannabinoids</b>

Sample ID **22090750424**

Matrix Flower

Metric

Harvest/Prod Date

Report Created 10/6/2022

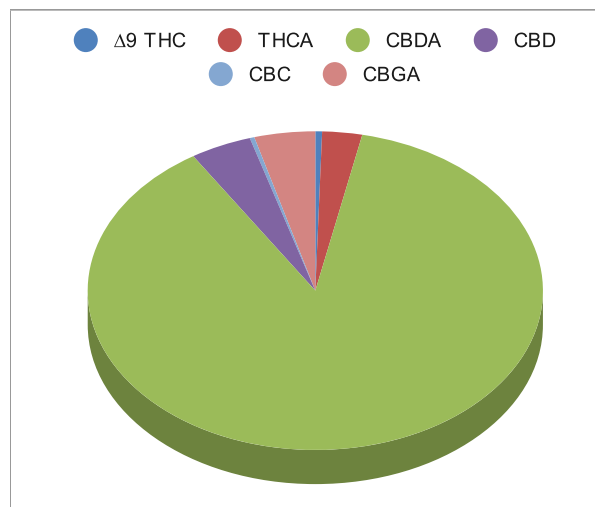
Results Valid Until 10/6/2023

Sample Extracted  
10/5/2022 9:15

Sample Analyzed  
10/5/2022 13:28




Cannabinoids	%Weight	mg/ gram	LOQ(% /w)
$\Delta 9$ THC	0.09	0.9	0.06
THCA	0.55	5.5	0.06
Total THC (THCA*0.877)+9THC	0.58	5.8	0.11
CBDA	17.04	170.4	0.06
CBD	0.85	8.5	0.06
CBN	<LOQ	<LOQ)	0.06
$\Delta 8$ THC	<LOQ	<LOQ)	0.06
‡ CBC	0.06	0.6	0.06
‡ CBGA	0.84	8.4	0.06
‡ CBG	<LOQ	<LOQ)	0.06
‡ CBDV	<LOQ	<LOQ)	0.06
‡ CBDVA	<LOQ	<LOQ)	0.06
‡ THCVA	<LOQ	<LOQ)	0.06
‡ CBDQ	<LOQ	<LOQ)	0.06



Total THC and Total CBD are calculated values per OAR 333-064-0100. Cannabinoid values for plant matter samples are reported on a dry weight basis. Water activity action level is 0.65Aw. LOQ= Limit of Quantitation. NR=Not Reported.

Rogue Research Lab LLC  
218 E. Main Street, Rogue River, OR 97537  
Tel. 541-582-1962  
ORELAP 4107 OLCC 101050708B  
[rogueresearchlab.com](http://rogueresearchlab.com)

  
Craig Berry - Lab Director  
10/6/22


**ROGUE RESEARCH LAB**

Results pertain to submitted samples only. Rogue Research Lab LLC makes no claims as to the consumer safety or other risks associated with any detected or non-detected amounts of any pesticides, solvents or other adulterants. This report shall not be reproduced, unless in its entirety, without written approval from Rogue Research Lab LLC. Samples were received in good condition and all QC samples met acceptance criteria of the method; data available upon request. Analytes accompanied by dagger (‡) are not within the scope of accreditation and are for informational purposes only. Corrected CBDV.

**Fields of Hemp**

Sample JJ's Dream

Strain

<b>0.10%</b>	<b>18.14%</b>	<b>21.71%</b>
$\Delta 9$ THC	Total CBD	Total Cannabinoids
<b>Not tested</b>	<b>Pass</b>	<b>217.1</b>
Water Activity	Moisture	mg / g Total Cannabinoids

Sample ID **21111740756**

Matrix Flower

Metric

Harvest/Prod Date

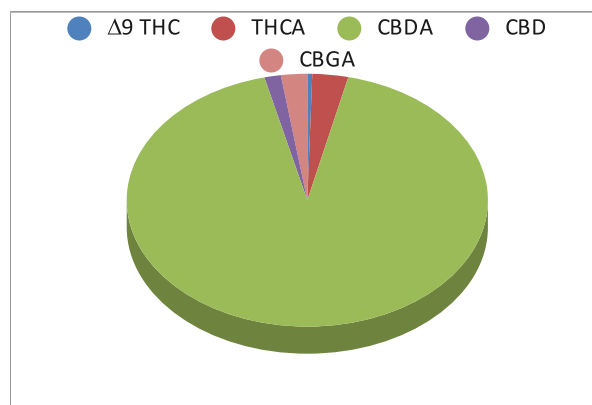
Report Created 11/22/2021

Results Valid Until 11/22/2022

Sample Extracted  
11/18/2021 16:30


Sample Analyzed  
11/19/2021 11:28


Cannabinoids	%Weight	mg/ gram	LOQ(% /w)
$\Delta 9$ THC	<b>0.10</b>	1.0	0.05
Total THC (THCA*0.877)+9THC	<b>0.71</b>	7.1	0.05
Total CBD (CBDA*0.877)+CBD	<b>17.94</b>	179.4	0.05
THCA	0.70	7.0	0.05
CBDA	20.09	200.9	0.05
CBD	0.32	3.2	0.05
CBN	0.00	0.0	0.05
‡ $\Delta 8$ THC	0.00	0.0	0.05
‡ CBC	0.00	0.0	0.05
‡ CBGA	0.51	5.1	0.05
‡ CBG	0.00	0.0	0.05
‡ CBDV	0.00	0.0	0.05
‡ CBDVA	0.00	0.0	0.05
‡ THCVA	0.00	0.0	0.05



Total THC and Total CBD are calculated values per OAR 333-064-0100. Cannabinoid values for plant matter samples are reported on a dry weight basis. Water activity action level is 0.65Aw. LOQ= Limit of Quantitation. NR=Not Reported 0.00 = Not Detected above LOQ

Rogue Research Lab LLC  
218 E. Main Street, Rogue River, OR 97537 Tel.  
541-582-1962  
ORELAP 4107 OLCC 101050708B  
[rogueresearchlab.com](http://rogueresearchlab.com)

  
Craig Berry - Lab Director  
11/22/21

Results pertain to submitted samples only. Rogue Research Lab LLC makes no claims as to the consumer safety or other risks associated with any detected or non-detected amounts of any pesticides, solvents or other adulterants. This report shall not be reproduced, unless in its entirety, without written approval from Rogue Research Lab LLC. Samples were received in good condition and all QC samples met acceptance criteria of the method; data available upon request. Analytes accompanied by dagger (‡) are not within the scope of accreditation and are for informational purposes only.

## Fields of Hemp

Sample Lemon Octane

Strain

<b>0.07%</b>	<b>17.83%</b>	<b>23.16%</b>
$\Delta 9$ THC	Total CBD	<b>Total</b> <b>Cannabinoids</b>
<b>Not tested</b>	<b>Pass</b>	<b>231.6</b>
<b>Water Activity</b>	<b>8.17</b> <b>Moisture</b>	<b>mg / g Total</b> <b>Cannabinoids</b>

Sample ID **22100800436**

Matrix Flower

Metric

Harvest/Prod Date

Report Created 10/18/2022

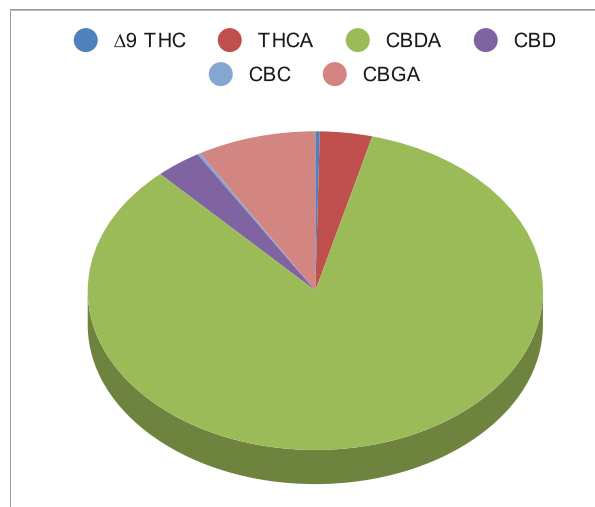
Results Valid Until 10/18/2023

Sample Extracted  
10/13/2022 9:15

Sample Analyzed  
10/17/2022 14:42




Cannabinoids	%Weight	mg/ gram	LOQ(% /w)
$\Delta 9$ THC	0.07	0.7	0.06
THCA	0.86	8.6	0.06
Total THC (THCA*0.877)+9THC	0.83	8.3	0.11
CBDA	19.46	194.6	0.06
CBD	0.76	7.6	0.06
CBN	<LOQ	<LOQ)	0.06
$\Delta 8$ THC	<LOQ	<LOQ)	0.06
‡ CBC	<LOQ	<LOQ)	0.06
‡ CBGA	1.96	19.6	0.06
‡ CBG	<LOQ	<LOQ)	0.06
‡ CBDV	<LOQ	<LOQ)	0.06
‡ CBDVA	<LOQ	<LOQ)	0.06
‡ THCVA	<LOQ	<LOQ)	0.06
‡ CBDQ	<LOQ	<LOQ)	0.06



Total THC and Total CBD are calculated values per OAR 333-064-0100. Cannabinoid values for plant matter samples are reported on a dry weight basis. Water activity action level is 0.65Aw. LOQ= Limit of Quantitation. NR=Not Reported.

Rogue Research Lab LLC  
218 E. Main Street, Rogue River, OR 97537  
Tel. 541-582-1962  
ORELAP 4107 OLCC 101050708B  
[rogue-researchlab.com](http://rogue-researchlab.com)

  
Craig Berry - Lab Director  
10/18/22


**ROGUE RESEARCH LAB**

Results pertain to submitted samples only. Rogue Research Lab LLC makes no claims as to the consumer safety or other risks associated with any detected or non-detected amounts of any pesticides, solvents or other adulterants. This report shall not be reproduced, unless in its entirety, without written approval from Rogue Research Lab LLC. Samples were received in good condition and all QC samples met acceptance criteria of the method; data available upon request. Analytes accompanied by dagger (‡) are not within the scope of accreditation and are for informational purposes only. Corrected CBDV.



## Fields of Hemp

Sample Pineapple Kush

Strain

<b>&lt;LOQ</b>	<b>16.00%</b>	<b>20.90%</b>
$\Delta 9$ THC	Total CBD	<b>Total</b> <b>Cannabinoids</b>
<b>Not tested</b>	<b>Pass</b>	<b>209.0</b>
<b>Water Activity</b>	<b>8.40</b> <b>Moisture</b>	<b>mg / g Total</b> <b>Cannabinoids</b>

Sample ID **22100800437**

Matrix Flower

Metric

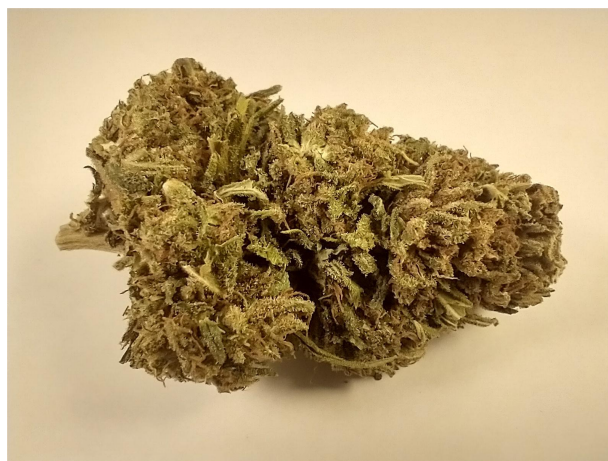
Harvest/Prod Date

Report Created 10/18/2022

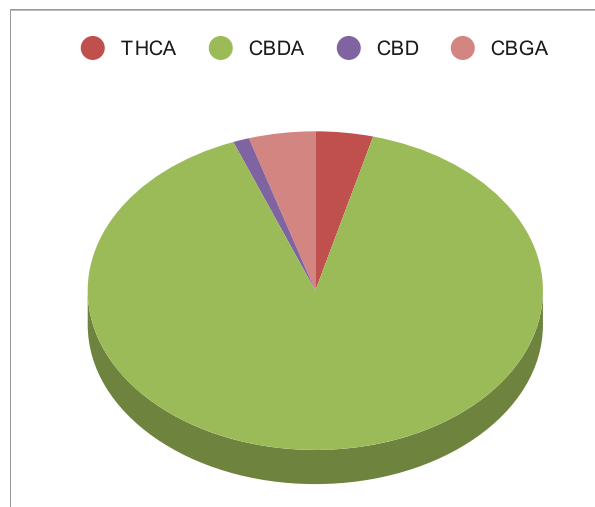
Results Valid Until 10/18/2023

Sample Extracted  
10/13/2022 9:15

Sample Analyzed  
10/17/2022 14:54




Cannabinoids	%Weight	mg/ gram	LOQ(% /w)
$\Delta 9$ THC	<LOQ	<LOQ)	0.06
THCA	0.82	8.2	0.06
Total THC ( $THCA \times 0.877$ )+9THC	0.72	7.2	0.11
CBDA	17.98	179.8	0.06
CBD	0.23	2.3	0.06
CBN	<LOQ	<LOQ)	0.06
$\Delta 8$ THC	<LOQ	<LOQ)	0.06
‡ CBC	<LOQ	<LOQ)	0.06
‡ CBGA	0.94	9.4	0.06
‡ CBG	<LOQ	<LOQ)	0.06
‡ CBDV	<LOQ	<LOQ)	0.06
‡ CBDVA	0.93	9.3	0.06
‡ THCVA	0.00	0.0	0.06
‡ CBDQ	<LOQ	<LOQ)	0.06



Total THC and Total CBD are calculated values per OAR 333-064-0100. Cannabinoid values for plant matter samples are reported on a dry weight basis. Water activity action level is 0.65Aw. LOQ= Limit of Quantitation. NR=Not Reported.

Rogue Research Lab LLC  
218 E. Main Street, Rogue River, OR 97537  
Tel. 541-582-1962  
ORELAP 4107 OLCC 101050708B  
[rogueresearchlab.com](http://rogueresearchlab.com)

  
Craig Berry - Lab Director  
10/18/22


**ROGUE RESEARCH LAB**

Results pertain to submitted samples only. Rogue Research Lab LLC makes no claims as to the consumer safety or other risks associated with any detected or non-detected amounts of any pesticides, solvents or other adulterants. This report shall not be reproduced, unless in its entirety, without written approval from Rogue Research Lab LLC. Samples were received in good condition and all QC samples met acceptance criteria of the method; data available upon request. Analytes accompanied by dagger (‡) are not within the scope of accreditation and are for informational purposes only. Corrected CBDV.

## Fields of Hemp

Sample Sour Candy Kush

Strain

<b>0.07%</b>	<b>16.33%</b>	<b>20.26%</b>
$\Delta 9$ THC	Total CBD	<b>Total</b> <b>Cannabinoids</b>
<b>Not tested</b>	<b>Pass</b>	<b>202.6</b>
<b>Water Activity</b>	<b>10.52</b> <b>Moisture</b>	<b>mg / g Total</b> <b>Cannabinoids</b>

Sample ID **22090750423**

Matrix Flower

Metric

Harvest/Prod Date

Report Created 10/6/2022

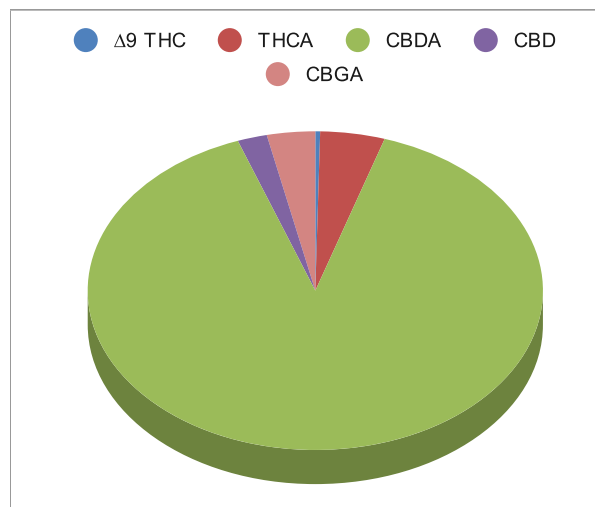
Results Valid Until 10/6/2023

Sample Extracted  
10/5/2022 9:15

Sample Analyzed  
10/5/2022 13:04




Cannabinoids	%Weight	mg/ gram	LOQ(% /w)
$\Delta 9$ THC	0.07	0.7	0.06
THCA	0.93	9.3	0.06
Total THC ( $THCA \times 0.877$ )+9THC	0.88	8.8	0.11
CBDA	18.14	181.4	0.06
CBD	0.43	4.3	0.06
CBN	<LOQ	<LOQ)	0.06
$\Delta 8$ THC	<LOQ	<LOQ)	0.06
‡ CBC	<LOQ	<LOQ)	0.06
‡ CBGA	0.69	6.9	0.06
‡ CBG	<LOQ	<LOQ)	0.06
‡ CBDV	<LOQ	<LOQ)	0.06
‡ CBDVA	<LOQ	<LOQ)	0.06
‡ THCVA	<LOQ	<LOQ)	0.06
‡ CBDQ	<LOQ	<LOQ)	0.06



Total THC and Total CBD are calculated values per OAR 333-064-0100. Cannabinoid values for plant matter samples are reported on a dry weight basis. Water activity action level is 0.65Aw. LOQ= Limit of Quantitation. NR=Not Reported.

Rogue Research Lab LLC  
218 E. Main Street, Rogue River, OR 97537  
Tel. 541-582-1962  
ORELAP 4107 OLCC 101050708B  
[rogueresearchlab.com](http://rogueresearchlab.com)

  
Craig Berry - Lab Director  
10/6/22


**ROGUE RESEARCH LAB**

Results pertain to submitted samples only. Rogue Research Lab LLC makes no claims as to the consumer safety or other risks associated with any detected or non-detected amounts of any pesticides, solvents or other adulterants. This report shall not be reproduced, unless in its entirety, without written approval from Rogue Research Lab LLC. Samples were received in good condition and all QC samples met acceptance criteria of the method; data available upon request. Analytes accompanied by dagger (‡) are not within the scope of accreditation and are for informational purposes only. Corrected CBDV.

## Fields of Hemp

Sample Sour Lifter

Strain

<b>0.19%</b>	<b>16.72%</b>	<b>20.51%</b>
$\Delta 9$ THC	Total CBD	Total Cannabinoids
<b>Not tested</b>	<b>Pass</b>	<b>205.1</b>
Water Activity	Moisture	mg / g Total Cannabinoids

Sample ID **22090750428**

Matrix Flower

Metric

Harvest/Prod Date

Report Created 10/6/2022

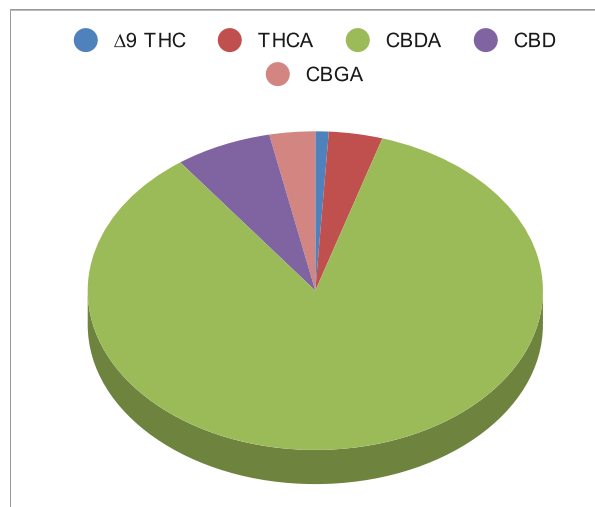
Results Valid Until 10/6/2023

Sample Extracted  
10/5/2022 9:15

Sample Analyzed  
10/5/2022 14:16




Cannabinoids	%Weight	mg/ gram	LOQ(% /w)
$\Delta 9$ THC	0.19	1.9	0.06
THCA	0.78	7.8	0.06
Total THC ( $THCA \times 0.877$ )+9THC	0.88	8.8	0.11
CBDA	17.46	174.6	0.06
CBD	1.41	14.1	0.06
CBN	<LOQ	<LOQ)	0.06
$\Delta 8$ THC	<LOQ	<LOQ)	0.06
‡ CBC	<LOQ	<LOQ)	0.06
‡ CBGA	0.67	6.7	0.06
‡ CBG	<LOQ	<LOQ)	0.06
‡ CBDV	<LOQ	<LOQ)	0.06
‡ CBDVA	<LOQ	<LOQ)	0.06
‡ THCVA	<LOQ	<LOQ)	0.06
‡ CBDQ	<LOQ	<LOQ)	0.06



Total THC and Total CBD are calculated values per OAR 333-064-0100. Cannabinoid values for plant matter samples are reported on a dry weight basis. Water activity action level is 0.65Aw. LOQ= Limit of Quantitation. NR=Not Reported.

Rogue Research Lab LLC  
218 E. Main Street, Rogue River, OR 97537  
Tel. 541-582-1962  
ORELAP 4107 OLCC 101050708B  
[rogueresearchlab.com](http://rogueresearchlab.com)

  
Craig Berry - Lab Director  
10/6/22


**ROGUE RESEARCH LAB**

Results pertain to submitted samples only. Rogue Research Lab LLC makes no claims as to the consumer safety or other risks associated with any detected or non-detected amounts of any pesticides, solvents or other adulterants. This report shall not be reproduced, unless in its entirety, without written approval from Rogue Research Lab LLC. Samples were received in good condition and all QC samples met acceptance criteria of the method; data available upon request. Analytes accompanied by dagger (‡) are not within the scope of accreditation and are for informational purposes only. Corrected CBDV.

## Fields of Hemp

Sample Special Sauce

Strain

<b>0.11%</b>	<b>11.69%</b>	<b>14.35%</b>
$\Delta 9$ THC	Total CBD	<b>Total</b> <b>Cannabinoids</b>
<b>Not tested</b>	<b>Pass</b>	<b>143.5</b>
<b>Water Activity</b>	<b>7.73</b> <b>Moisture</b>	<b>mg / g Total</b> <b>Cannabinoids</b>

Sample ID **22090750426**

Matrix Flower

Metric

Harvest/Prod Date

Report Created 10/6/2022

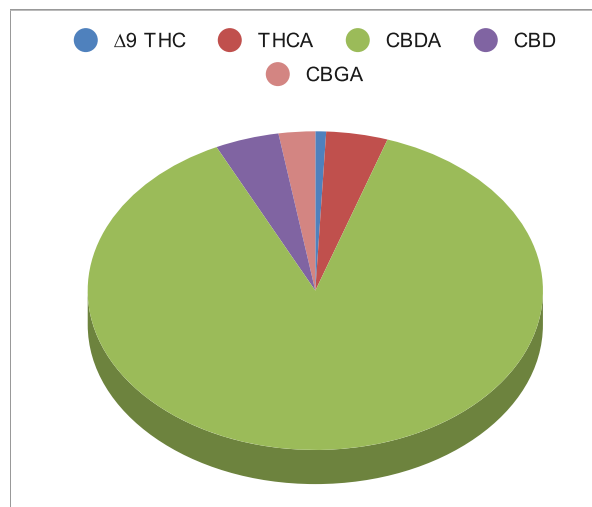
Results Valid Until 10/6/2023

Sample Extracted  
10/5/2022 9:15

Sample Analyzed  
10/5/2022 13:52




Cannabinoids	%Weight	mg/ gram	LOQ(% /w)
$\Delta 9$ THC	0.11	1.1	0.06
THCA	0.63	6.3	0.06
Total THC ( $THCA \times 0.877$ )+9THC	0.66	6.6	0.11
CBDA	12.59	125.9	0.06
CBD	0.65	6.5	0.06
CBN	<LOQ	<LOQ)	0.06
$\Delta 8$ THC	<LOQ	<LOQ)	0.06
‡ CBC	<LOQ	<LOQ)	0.06
‡ CBGA	0.37	3.7	0.06
‡ CBG	<LOQ	<LOQ)	0.06
‡ CBDV	<LOQ	<LOQ)	0.06
‡ CBDVA	<LOQ	<LOQ)	0.06
‡ THCVA	<LOQ	<LOQ)	0.06
‡ CBDQ	<LOQ	<LOQ)	0.06



Total THC and Total CBD are calculated values per OAR 333-064-0100. Cannabinoid values for plant matter samples are reported on a dry weight basis. Water activity action level is 0.65Aw. LOQ= Limit of Quantitation. NR=Not Reported.

Rogue Research Lab LLC  
218 E. Main Street, Rogue River, OR 97537  
Tel. 541-582-1962  
ORELAP 4107 OLCC 101050708B  
[rogue-researchlab.com](http://rogue-researchlab.com)

  
Craig Berry - Lab Director  
10/6/22


**ROGUE RESEARCH LAB**

Results pertain to submitted samples only. Rogue Research Lab LLC makes no claims as to the consumer safety or other risks associated with any detected or non-detected amounts of any pesticides, solvents or other adulterants. This report shall not be reproduced, unless in its entirety, without written approval from Rogue Research Lab LLC. Samples were received in good condition and all QC samples met acceptance criteria of the method; data available upon request. Analytes accompanied by dagger (‡) are not within the scope of accreditation and are for informational purposes only. Corrected CBDV.



## Fields of Hemp

Sample Suver Haze

Strain

<b>0.17%</b>	<b>14.22%</b>	<b>17.54%</b>
$\Delta 9$ THC	Total CBD	Total Cannabinoids
<b>Not tested</b>	<b>Pass</b>	<b>175.4</b>
Water Activity	Moisture	mg / g Total Cannabinoids

Sample ID **22090750425**

Matrix Flower

Metric

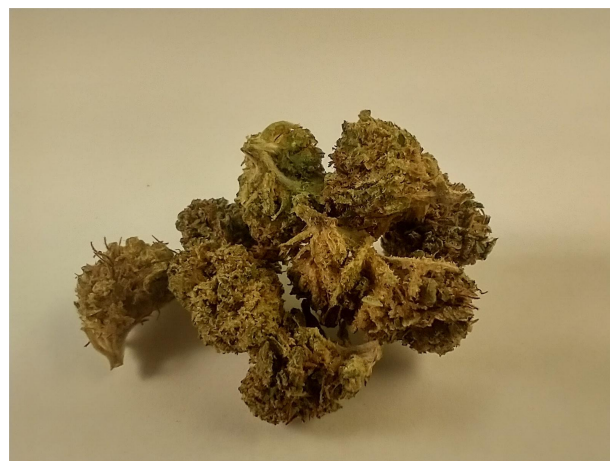
Harvest/Prod Date

Report Created 10/6/2022

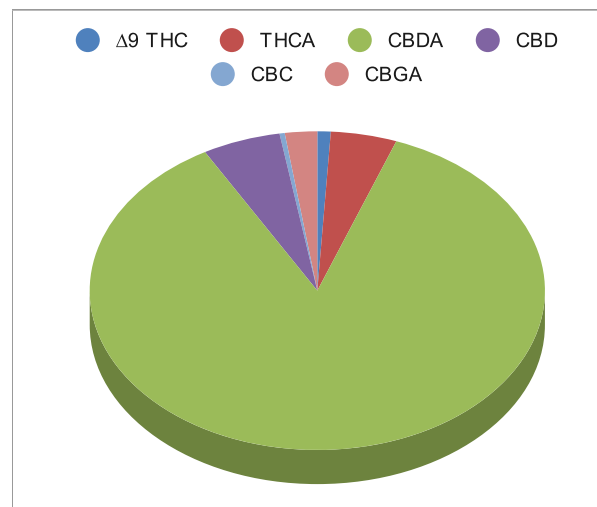
Results Valid Until 10/6/2023

Sample Extracted  
10/5/2022 9:15

Sample Analyzed  
10/5/2022 13:40




Cannabinoids	%Weight	mg/ gram	LOQ(% /w)
$\Delta 9$ THC	0.17	1.7	0.06
THCA	0.82	8.2	0.06
Total THC (THCA*0.877)+9THC	0.89	8.9	0.11
CBDA	15.11	151.1	0.06
CBD	0.97	9.7	0.06
CBN	<LOQ	<LOQ)	0.06
$\Delta 8$ THC	<LOQ	<LOQ)	0.06
‡ CBC	0.06	0.6	0.06
‡ CBGA	0.40	4.0	0.06
‡ CBG	<LOQ	<LOQ)	0.06
‡ CBDV	<LOQ	<LOQ)	0.06
‡ CBDVA	<LOQ	<LOQ)	0.06
‡ THCVA	<LOQ	<LOQ)	0.06
‡ CBDQ	<LOQ	<LOQ)	0.06



Total THC and Total CBD are calculated values per OAR 333-064-0100. Cannabinoid values for plant matter samples are reported on a dry weight basis. Water activity action level is 0.65Aw. LOQ= Limit of Quantitation. NR=Not Reported.

Rogue Research Lab LLC  
218 E. Main Street, Rogue River, OR 97537  
Tel. 541-582-1962  
ORELAP 4107 OLCC 101050708B  
[rogueresearchlab.com](http://rogueresearchlab.com)

  
Craig Berry - Lab Director  
10/6/22


**ROGUE RESEARCH LAB**

Results pertain to submitted samples only. Rogue Research Lab LLC makes no claims as to the consumer safety or other risks associated with any detected or non-detected amounts of any pesticides, solvents or other adulterants. This report shall not be reproduced, unless in its entirety, without written approval from Rogue Research Lab LLC. Samples were received in good condition and all QC samples met acceptance criteria of the method; data available upon request. Analytes accompanied by dagger (‡) are not within the scope of accreditation and are for informational purposes only. Corrected CBDV.