

Fields of Hemp

Sample Special Sauce

Strain

0.11%	11.69%	14.35%
Δ9 THC	Total CBD	Total Cannabinoids
Not tested	Pass	143.5
Water Activity	7.73	mg / g Total Cannabinoids
	Moisture	



Sample ID

22090750426

Matrix

Flower

Metric

Harvest/Prod Date

Report Created

10/6/2022

Results Valid Until

10/6/2023

Sample Extracted

10/5/2022 9:15

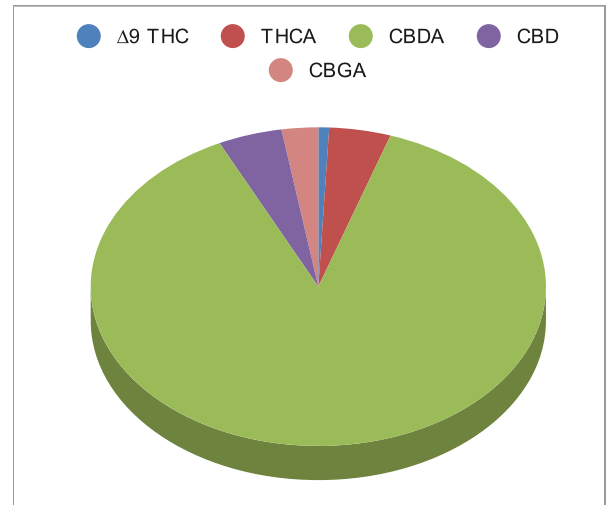
Sample Analyzed

10/5/2022 13:52

Cannabinoids


%Weight mg/ gram LOQ(% /w)

	%Weight	mg/ gram	LOQ(% /w)
Δ9 THC	0.11	1.1	0.06
THCA	0.63	6.3	0.06
Total THC (THCA*0.877)+9THC	0.66	6.6	0.11
CBDA	12.59	125.9	0.06
CBD	0.65	6.5	0.06
CBN	<LOQ	<LOQ)	0.06
Δ8 THC	<LOQ	<LOQ)	0.06
‡ CBC	<LOQ	<LOQ)	0.06
‡ CBGA	0.37	3.7	0.06
‡ CBG	<LOQ	<LOQ)	0.06
‡ CBDV	<LOQ	<LOQ)	0.06
‡ CBDVA	<LOQ	<LOQ)	0.06
‡ THCVA	<LOQ	<LOQ)	0.06
‡ CBDQ	<LOQ	<LOQ)	0.06

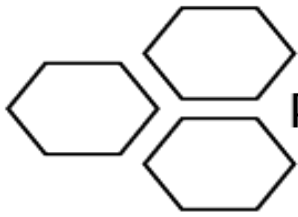


Total THC and Total CBD are calculated values per OAR 333-064-0100. Cannabinoid values for plant matter samples are reported on a dry weight basis. Water activity action level is 0.65Aw. LOQ= Limit of Quantitation. NR=Not Reported.

[Rogue Research Lab LLC](http://RogueResearchLab.com)
 218 E. Main Street, Rogue River, OR 97537
 Tel. 541-582-1962
 ORELAP 4107 OLCC 101050708B
rogue-research-lab.com


 Craig Berry - Lab Director
 10/6/22

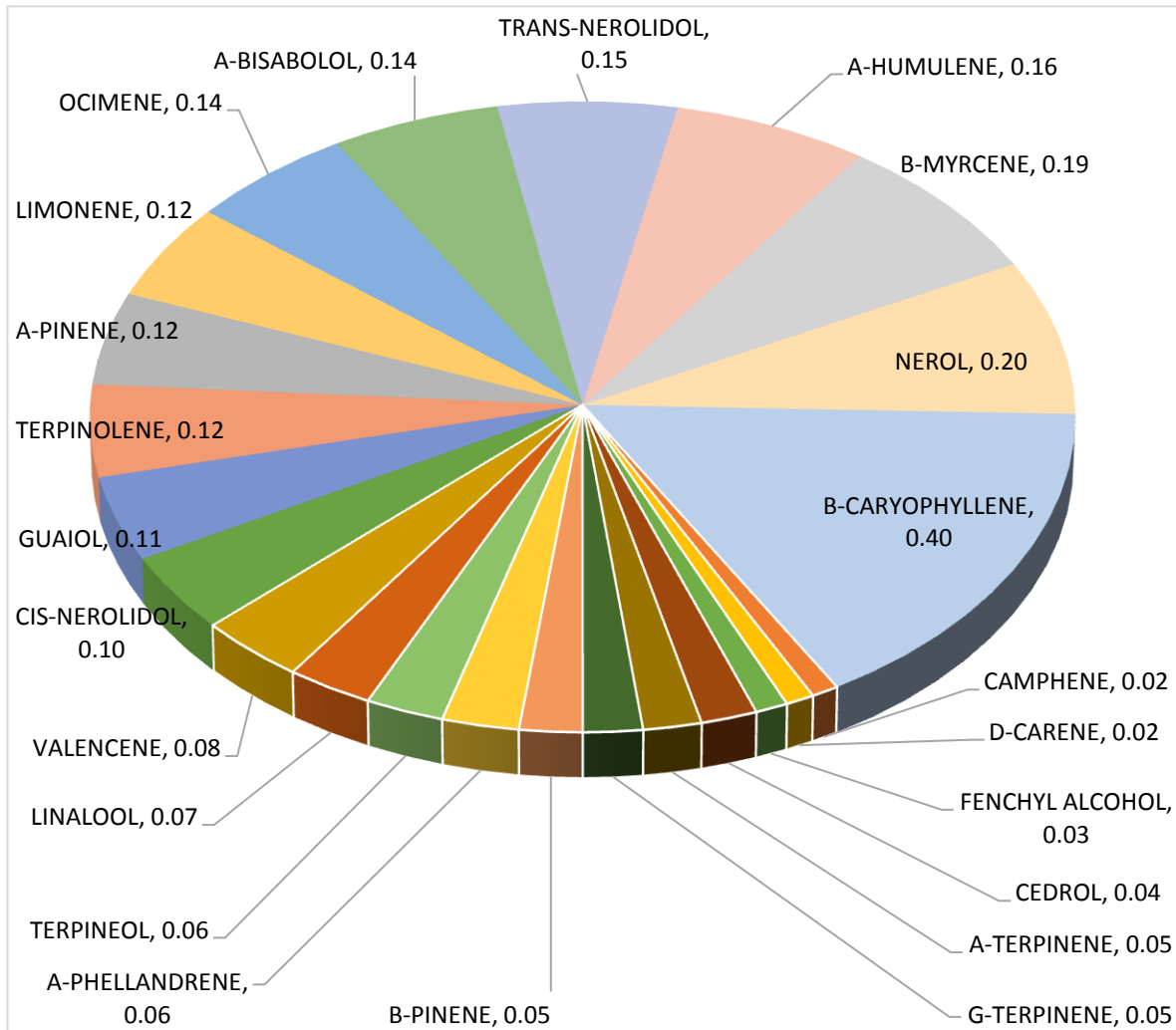
Results pertain to submitted samples only. Rogue Research Lab LLC makes no claims as to the consumer safety or other risks associated with any detected or non-detected amounts of any pesticides, solvents or other adulterants. This report shall not be reproduced, unless in its entirety, without written approval from Rogue Research Lab LLC. Samples were received in good condition and all QC samples met acceptance criteria of the method; data available upon request. Analytes accompanied by dagger (‡) are not within the scope of accreditation and are for informational purposes only. Corrected CBDV.



Terpene Analysis

Customer Fields of Hemp
Sample Name Special Sauce
File Name 22090750426
Date/Time Extracted: 9/6/2022 18:30
Date/Time Analyzed: 10/5/2022 19:33
Analysis Method/SOP: LO 001R9/4-22RC824

TESTED FOR : A-BISABOLOL, A-CEDRENE, A-HUMULENE, A-PHELLANDRENE, A-PINENE, A-TERPINENE, B-CARYOPHYLLENE, B-MYRCENE, BORNEOL, B-PINENE, CAMPHENE, CAMPHOR, CARYOPHYLLENE OXIDE, CEDROL, CIS-NEROLIDOL, D-CARENE, DL-MENTHOL, EUCALYPTOL, FARNESENE, R&L FENCHONE, FENCHYL ALCOHOL, GERANIOL, GERANYL ACETATE, G-TERPINENE, GUAIOL, ISOBORNEOL, ISOPULEGOL, LIMONENE, LINALOOL, NEROL, OCIMENE, P-CYMENE, PULEGONE, SABINENE, TERPINEOL, TERPINOLENE, TRANS-NEROLIDOL, TRANS-OCIMENE, VALENCENE.




Craig Berry - Lab Director 10/6/2022

Terpene total w/w% 2.45