

## Fields of Hemp

Sample Pineapple Kush

Strain

<b>&lt;LOQ</b>	<b>16.00%</b>	<b>20.90%</b>
$\Delta 9$ THC	Total CBD	<b>Total Cannabinoids</b>
<b>Not tested</b>	<b>Pass</b>	<b>209.0</b>
<b>Water Activity</b>	<b>8.40</b>	<b>mg / g Total Cannabinoids</b>
	<b>Moisture</b>	



Sample ID

**22100800437**

Matrix

Flower

Metric

Harvest/Prod Date

Report Created

10/18/2022

Results Valid Until

10/18/2023

Sample Extracted

10/13/2022 9:15

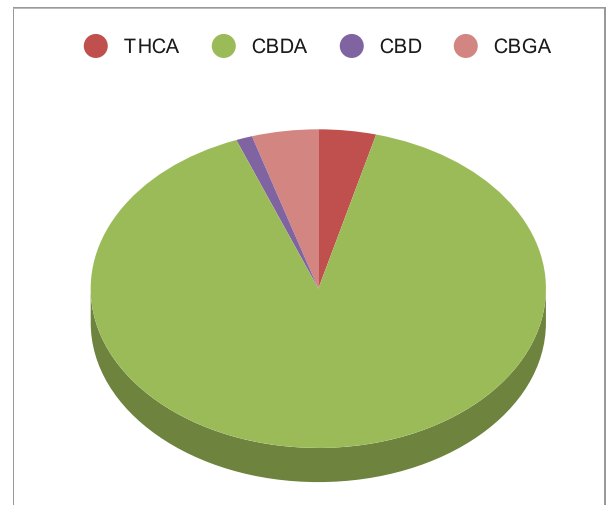
Sample Analyzed

10/17/2022 14:54

## Cannabinoids


**%Weight mg/ gram LOQ(% /w)**

	<b>%Weight</b>	<b>mg/ gram</b>	<b>LOQ(% /w)</b>
$\Delta 9$ THC	<LOQ	<LOQ)	0.06
THCA	0.82	8.2	0.06
Total THC (THCA*0.877)+9THC	0.72	7.2	0.11
CBDA	17.98	179.8	0.06
CBD	0.23	2.3	0.06
CBN	<LOQ	<LOQ)	0.06
$\Delta 8$ THC	<LOQ	<LOQ)	0.06
‡ CBC	<LOQ	<LOQ)	0.06
‡ CBGA	0.94	9.4	0.06
‡ CBG	<LOQ	<LOQ)	0.06
‡ CBDV	<LOQ	<LOQ)	0.06
‡ CBDVA	0.93	9.3	0.06
‡ THCVA	0.00	0.0	0.06
‡ CBDQ	<LOQ	<LOQ)	0.06



Total THC and Total CBD are calculated values per OAR 333-064-0100. Cannabinoid values for plant matter samples are reported on a dry weight basis. Water activity action level is 0.65Aw. LOQ= Limit of Quantitation. NR=Not Reported.

[Rogue Research Lab LLC](http://RogueResearchLab.com)  
 218 E. Main Street, Rogue River, OR 97537  
 Tel. 541-582-1962  
 ORELAP 4107 OLCC 101050708B  
[rogue-research-lab.com](http://rogue-research-lab.com)

  
 Craig Berry - Lab Director  
 10/18/22

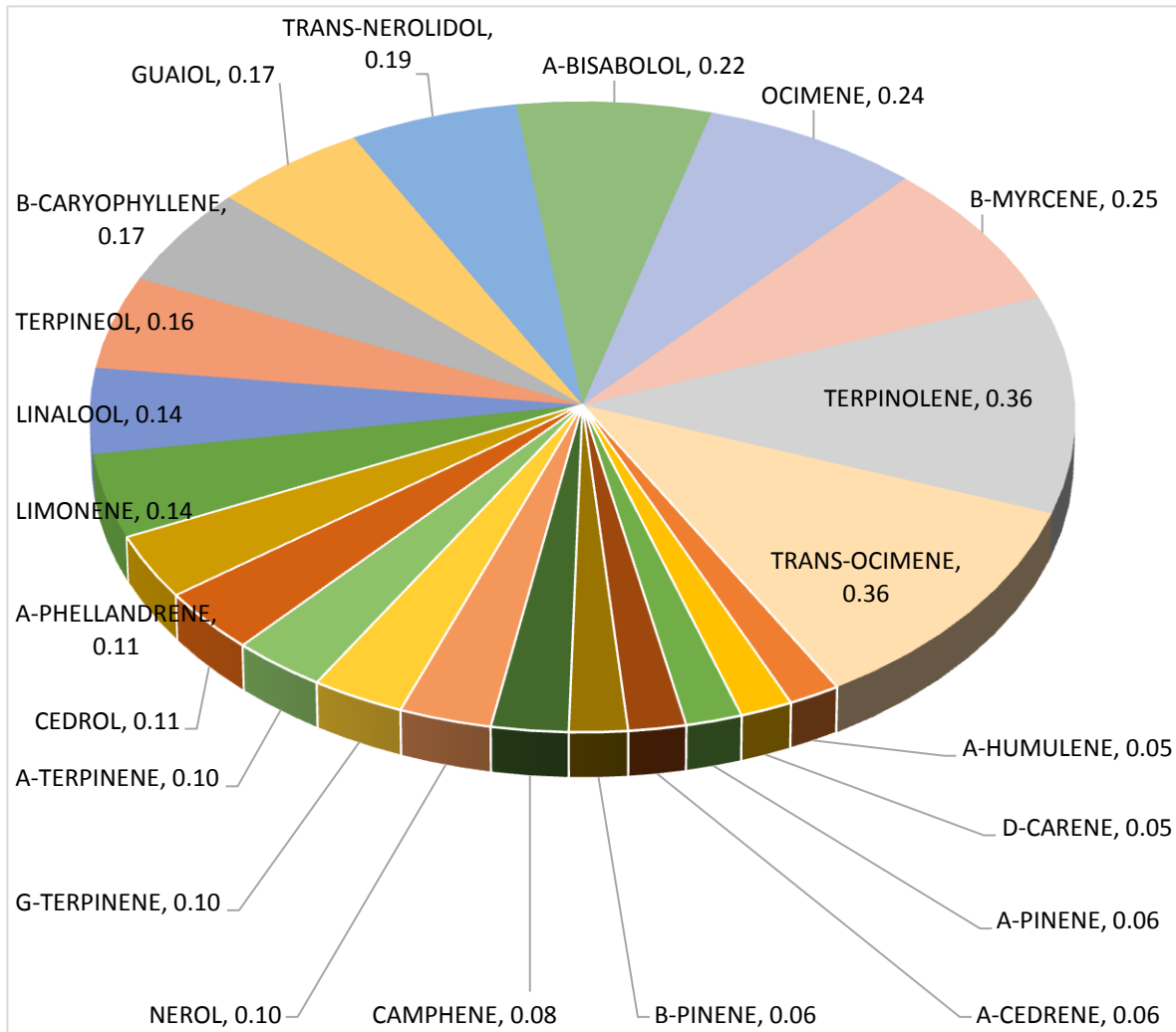
Results pertain to submitted samples only. Rogue Research Lab LLC makes no claims as to the consumer safety or other risks associated with any detected or non-detected amounts of any pesticides, solvents or other adulterants. This report shall not be reproduced, unless in its entirety, without written approval from Rogue Research Lab LLC. Samples were received in good condition and all QC samples met acceptance criteria of the method; data available upon request. Analytes accompanied by dagger (‡) are not within the scope of accreditation and are for informational purposes only. Corrected CBDV.



# Terpene Analysis

**Customer** Fields of Hemp  
**Sample Name** Pineapple Kush  
**File Name** 2210080437  
**Date/Time Extracted:** 10/13/2022 10:15  
**Date/Time Analyzed:** 10/17/2022 15:25  
**Analysis Method/SOP:** LO 001R9/4-22RC824

TESTED FOR : A-BISABOLOL, A-CEDRENE, A-HUMULENE, A-PHELLANDRENE, A-PINENE, A-TERPINENE, B-CARYOPHYLLENE, B-MYRCENE, BORNEOL, B-PINENE, CAMPHENE, CAMPHOR, CARYOPHYLLENE OXIDE, CEDROL, CIS-NEROLIDOL, D-CARENE, DL-MENTHOL, EUCALYPTOL, FARNESENE, R&L FENCHONE, FENCHYL ALCOHOL, GERANIOL, GERANYL ACETATE, G-TERPINENE, GUAJOL, ISOBORNEOL, ISOPULEGOL, LIMONENE, LINALOOL, NEROL, OCIMENE, P-CYMENE, PULEGONE, SABINENE, TERPINEOL, TERPINOLENE, TRANS-NEROLIDOL, TRANS-OCIMENE, VALENCENE.



*Craig Berry*  
Craig Berry - Lab Director

10/18/2022

Terpene total w/w%

3.27