

## Fields of Hemp

Sample JJ's Dream

Strain

<b>0.10%</b>	<b>18.14%</b>	<b>21.71%</b>
$\Delta 9$ THC	Total CBD	<b>Total Cannabinoids</b>
<b>Not tested</b>	<b>Pass</b>	<b>217.1</b>
Water Activity	<b>9.14</b> Moisture	<b>mg / g Total Cannabinoids</b>



Sample ID **21111740756**

Matrix Flower

Metric

Harvest/Prod Date

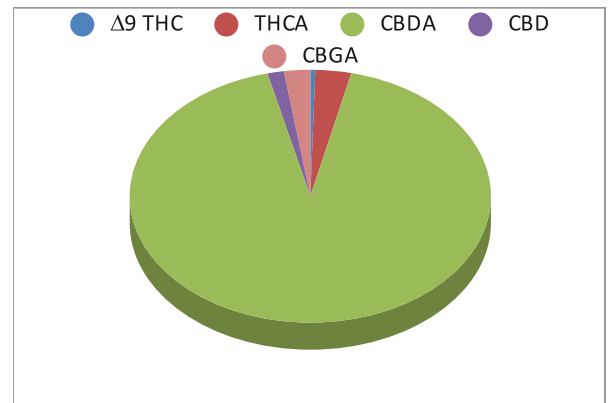
Report Created 11/22/2021

Results Valid Until 11/22/2022

Sample Extracted  
11/18/2021 16:30


Sample Analyzed  
11/19/2021 11:28

Cannabinoids	%Weight	mg/ gram	LOQ(% /w)
$\Delta 9$ THC	<b>0.10</b>	1.0	0.05
Total THC (THCA*0.877)+9THC	<b>0.71</b>	7.1	0.05
Total CBD (CBDA*0.877)+CBD	<b>17.94</b>	179.4	0.05
THCA	0.70	7.0	0.05
CBDA	20.09	200.9	0.05
CBD	0.32	3.2	0.05
CBN	0.00	0.0	0.05
‡ $\Delta 8$ THC	0.00	0.0	0.05
‡ CBC	0.00	0.0	0.05
‡ CBGA	0.51	5.1	0.05
‡ CBG	0.00	0.0	0.05
‡ CBDV	0.00	0.0	0.05
‡ CBDVA	0.00	0.0	0.05
‡ THCVA	0.00	0.0	0.05



Total THC and Total CBD are calculated values per OAR 333-064-0100. Cannabinoid values for plant matter samples are reported on a dry weight basis. Water activity action level is 0.65Aw. LOQ= Limit of Quantitation. NR=Not Reported 0.00 = Not Detected above LOQ

Rogue Research Lab LLC  
218 E. Main Street, Rogue River, OR 97537 Tel.  
541-582-1962  
ORELAP 4107 OLCC 101050708B  
[rogue-research-lab.com](http://rogue-research-lab.com)

  
Craig Berry - Lab Director  
11/22/21



ROGUE RESEARCH LAB

Results pertain to submitted samples only. Rogue Research Lab LLC makes no claims as to the consumer safety or other risks associated with any detected or non-detected amounts of any pesticides, solvents or other adulterants. This report shall not be reproduced, unless in its entirety, without written approval from Rogue Research Lab LLC. Samples were received in good condition and all QC samples met acceptance criteria of the method; data available upon request. Analytes accompanied by dagger (‡) are not within the scope of accreditation and are for informational purposes only.



# Certificate of Analysis

Client Fields of Hemp  
 Sample JJ's Dream  
 Sample ID 21111740756

Sample Extracted

01/14/21 9:01

**Pesticides** Batch 211122-01 **Results** Detected Pesticides shown in **Red**

Analyte	LOQ, PPM	Limit, PPM	Status	Analyte	LOQ, PPM	Limit, PPM	Status
Abamectin	0.250	0.500	Not detected	Hexythiazox	0.500	1.000	Not Detected
Acephate	0.200	0.400	Not detected	Imazalil	0.100	0.200	Not Detected
Acequinocyl	1.000	2.000	Not detected	Imidacloprid	0.200	0.400	Not Detected
Acetamiprid	0.100	0.200	Not detected	Kresoxim Methyl	0.200	0.400	Not Detected
Aldicarb	0.200	0.400	Not detected	Malathion	0.100	0.200	Not Detected
Azoxystrobin	0.100	0.200	Not detected	Metalaxyl	0.100	0.200	Not Detected
Bifenazate	0.100	0.200	Not detected	Methiocarb	0.100	0.200	Not Detected
Bifenthrin	0.100	0.200	Not detected	Methomyl	0.200	0.400	Not Detected
Boscalid	0.200	0.400	Not detected	Methyl Parathion	0.100	0.200	Not Detected
Carbaryl	0.100	0.200	Not detected	MGK-264	0.100	0.200	Not Detected
Carbofuran	0.100	0.200	Not detected	Myclobutanil	0.100	0.200	Not Detected
Chlorantraniliprole	0.100	0.200	Not detected	Naled	0.500	1.000	Not Detected
Chlorfenapyr	0.500	1.000	Not detected	Oxamyl	0.500	1.000	Not Detected
Chlorpyrifos	0.100	0.200	Not detected	Paclobutrazol	0.200	0.400	Not Detected
Clofentezine	0.100	0.200	Not detected	Permethrins	0.100	0.200	Not Detected
Cyfluthrin	0.500	1.000	Not detected	Phosmet	0.100	0.200	Not Detected
Cypermethrin	0.500	1.000	Not detected	Piperonyl Butoxide	1.000	2.000	Not Detected
Daminozide	0.500	1.000	Not detected	Prallethrin	0.100	0.200	Not Detected
DDVP	0.500	1.000	Not detected	Propiconazole	0.200	0.400	Not Detected
Diazinon	0.100	0.200	Not detected	Propoxur	0.100	0.200	Not Detected
Dimethoate	0.100	0.200	Not detected	Pyrethrins	0.500	1.000	Not Detected
Ethoprophos	0.100	0.200	Not detected	Pyridaben	0.100	0.200	Not Detected
Etofenprox	0.200	0.400	Not detected	Spinosad	0.100	0.200	Not Detected
Etoxazole	0.100	0.200	Not detected	Spiromesifen	0.100	0.200	Not Detected
Fenoxycarb	0.100	0.200	Not detected	Spirotetramat	0.100	0.200	Not Detected
Fenpyroximate	0.200	0.400	Not detected	Spiroxamine	0.200	0.400	Not Detected
Fipronil	0.200	0.400	Not detected	Tebuconazole	0.200	0.400	Not Detected
Flonicamid	0.500	1.000	Not detected	Thiacloprid	0.100	0.200	Not Detected
Fludioxonil	0.200	0.400	Not detected	Thiamethoxam	0.100	0.200	Not Detected
				Trifloxystrobin	0.100	0.200	Not Detected

[Rogue Research Lab LLC](#)  
[218 E. Main Street, Rogue River, OR 97537 Tel.](#)  
[541-582-1962](#)  
[ORELAP 4107 OLCC 101050708B](#)  
[rogueresearchlab.com](#)

Craig Berry - Lab Director  
 11/22/21



Results pertain to submitted samples only. Rogue Research Lab LLC makes no claims as to the consumer safety or other risks associated with any detected or non-detected amounts of any pesticides, solvents or other adulterants. This report shall not be reproduced, unless in its entirety, without written approval from Rogue Research Lab LLC. Samples were received in good condition and all QC samples met acceptance criteria of the method; data available upon request. Pesticide testing provided for information only as the sample was not obtained using regulated sampling methods.



ROGUE RESEARCH LAB

# Certificate of Analysis

Client Fields of Hemp  
Sample JJ's Dream  
Sample ID 21111740756

## Pesticides Batch 211122-01 QA Recovery limits

Analyte	%Recovery	Recovery limits	Analyte	%Recovery	Recovery limits
Abamectin	58.4	50-100	Hexythiazox	125.7	50-100
Acephate	98.2	50-100	Imazalil	157.3	50-100
Acequinocyl	91.8	50-100	Imidacloprid	75.5	50-100
Acetamiprid	55.0	50-100	Kresoxim Methyl	158.3	50-100
Aldicarb	95.6	50-100	Malathion	86.7	50-100
Azoxystrobin	55.4	50-100	Metalaxyl	93.1	50-100
Bifenazate	100.6	50-100	Methiocarb	94.2	50-100
Bifenthrin	98.1	50-100	Methomyl	62.4	50-100
Boscalid	96.1	50-100	Methyl Parathion	98.2	50-100
Carbaryl	114.8	50-100	MGK-264	98.7	50-100
Carbofuran	100.6	50-100	Myclobutanil	119.6	50-100
Chlorantraniliprole	83.8	50-100	Naled	60.1	50-100
Chlorfenapyr	115.0	50-100	Oxamyl	84.5	50-100
Chlorpyrifos	90.7	50-100	Paclobutrazol	122.5	50-100
Clofentezine	104.5	50-100	Permethrins	149.9	50-100
Cyfluthrin	96.4	50-100	Phosmet	57.5	50-100
Cypermethrin	108.2	50-100	Piperonyl Butoxide	102.6	50-100
Daminozide	124.3	50-100	Prallethrin	100.5	50-100
DDVP	154.7	50-100	Propiconazole	80.0	50-100
Diazinon	112.4	50-100	Propoxur	114.4	50-100
Dimethoate	130.2	50-100	Pyrethrins	89.2	50-100
Ethoprophos	122.6	50-100	Pyridaben	116.9	50-100
Etofenprox	110.5	50-100	Spinosad	156.9	50-100
Etoxazole	81.6	50-100	Spiromesifen	82.9	50-100
Fenoxycarb	140.7	50-100	Spirotetramat	141.6	50-100
Fenpyroximate	136.0	50-100	Spiroxamine	111.3	50-100
Fipronil	127.4	50-100	Tebuconazole	99.8	50-100
Flonicamid	113.3	50-100	Thiacloprid	48.9	50-100
Fludioxonil	62.4	50-100	Thiamethoxam	120.7	50-100
			Trifloxystrobin	101.0	50-100

[Rogue Research Lab LLC](#)  
[218 E. Main Street, Rogue River, OR 97537 541-582-1962](#)  
[ORELAP 4107 OLCC 101050708B](#)  
[rogueresearchlab.com](#)

Craig Berry - Lab Director  
11/22/21



ROGUE RESEARCH LAB

Results pertain to submitted samples only. Rogue Research Lab LLC makes no claims as to the consumer safety or other risks associated with any detected or non-detected amounts of any pesticides, solvents or other adulterants. This report shall not be reproduced, unless in its entirety, without written approval from Rogue Research Lab LLC. Samples were received in good condition and all QC samples met acceptance criteria of the method; data available upon request. Pesticide testing provided for information only as the sample was not obtained using regulated sampling methods.