

Fields of Hemp

Sample Bordeaux

Strain

0.09%	17.67%	20.49%
$\Delta 9$ THC	Total CBD	Total Cannabinoids
Not tested	Pass	204.9
Water Activity	11.63 Moisture	mg / g Total Cannabinoids



Sample ID **21111620713**

Matrix Flower

Metric

Harvest/Prod Date

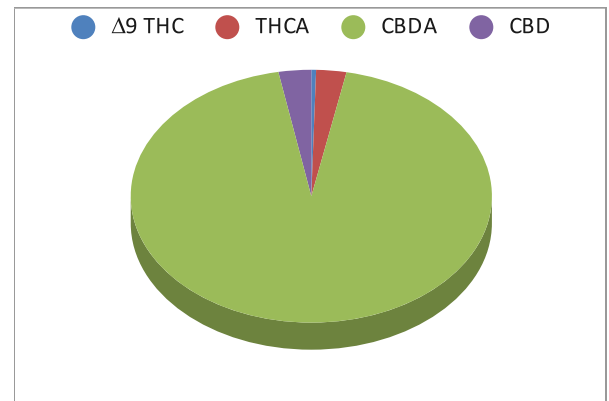
Report Created 11/22/2021

Results Valid Until 11/22/2022

Sample Extracted
11/10/2021 16:31


Sample Analyzed
11/11/2021 9:55

Cannabinoids	%Weight	mg/ gram	LOQ(% /w)
$\Delta 9$ THC	0.09	0.9	0.05
Total THC (THCA*0.877)+9THC	0.57	5.7	0.05
Total CBD (CBDA*0.877)+CBD	17.48	174.8	0.05
THCA	0.55	5.5	0.05
CBDA	19.25	192.5	0.05
CBD	0.60	6.0	0.05
CBN	0.00	0.0	0.05
‡ $\Delta 8$ THC	0.00	0.0	0.05
‡ CBC	0.00	0.0	0.05
‡ CBGA	0.00	0.0	0.05
‡ CBG	0.00	0.0	0.05
‡ CBDV	0.00	0.0	0.05
‡ CBDVA	0.00	0.0	0.05
‡ THCVA	0.00	0.0	0.05



Total THC and Total CBD are calculated values per OAR 333-064-0100. Cannabinoid values for plant matter samples are reported on a dry weight basis. Water activity action level is 0.65Aw. LOQ= Limit of Quantitation. NR=Not Reported 0.00 = Not Detected above LOQ

Rogue Research Lab LLC
218 E. Main Street, Rogue River, OR 97537 Tel.
541-582-1962
ORELAP 4107 OLCC 101050708B
rogue-research-lab.com


Craig Berry - Lab Director
11/22/21

Results pertain to submitted samples only. Rogue Research Lab LLC makes no claims as to the consumer safety or other risks associated with any detected or non-detected amounts of any pesticides, solvents or other adulterants. This report shall not be reproduced, unless in its entirety, without written approval from Rogue Research Lab LLC. Samples were received in good condition and all QC samples met acceptance criteria of the method; data available upon request. Analytes accompanied by dagger (‡) are not within the scope of accreditation and are for informational purposes only.



Certificate of Analysis

Client Fields of Hemp
 Sample Bordeaux
 Sample ID 21111620713

Sample Extracted

01/14/21 9:01

Pesticides Batch 211113-01 **Results** Detected Pesticides shown in **Red**

Analyte	LOQ, PPM	Limit, PPM	Status	Analyte	LOQ, PPM	Limit, PPM	Status
Abamectin	0.250	0.500	Not detected	Hexythiazox	0.500	1.000	Not Detected
Acephate	0.200	0.400	Not detected	Imazalil	0.100	0.200	Not Detected
Acequinocyl	1.000	2.000	Not detected	Imidacloprid	0.200	0.400	Not Detected
Acetamiprid	0.100	0.200	Not detected	Kresoxim Methyl	0.200	0.400	Not Detected
Aldicarb	0.200	0.400	Not detected	Malathion	0.100	0.200	Not Detected
Azoxystrobin	0.100	0.200	Not detected	Metalaxyl	0.100	0.200	Not Detected
Bifenazate	0.100	0.200	Not detected	Methiocarb	0.100	0.200	Not Detected
Bifenthrin	0.100	0.200	Not detected	Methomyl	0.200	0.400	Not Detected
Boscalid	0.200	0.400	Not detected	Methyl Parathion	0.100	0.200	Not Detected
Carbaryl	0.100	0.200	Not detected	MGK-264	0.100	0.200	Not Detected
Carbofuran	0.100	0.200	Not detected	Myclobutanil	0.100	0.200	Not Detected
Chlorantraniliprole	0.100	0.200	Not detected	Naled	0.500	1.000	Not Detected
Chlorfenapyr	0.500	1.000	Not detected	Oxamyl	0.500	1.000	Not Detected
Chlorpyrifos	0.100	0.200	Not detected	Paclobutrazol	0.200	0.400	Not Detected
Clofentezine	0.100	0.200	Not detected	Permethrins	0.100	0.200	Not Detected
Cyfluthrin	0.500	1.000	Not detected	Phosmet	0.100	0.200	Not Detected
Cypermethrin	0.500	1.000	Not detected	Piperonyl Butoxide	1.000	2.000	Not Detected
Daminozide	0.500	1.000	Not detected	Prallethrin	0.100	0.200	Not Detected
DDVP	0.500	1.000	Not detected	Propiconazole	0.200	0.400	Not Detected
Diazinon	0.100	0.200	Not detected	Propoxur	0.100	0.200	Not Detected
Dimethoate	0.100	0.200	Not detected	Pyrethrins	0.500	1.000	Not Detected
Ethoprophos	0.100	0.200	Not detected	Pyridaben	0.100	0.200	Not Detected
Etofenprox	0.200	0.400	Not detected	Spinosad	0.100	0.200	Not Detected
Etoxazole	0.100	0.200	Not detected	Spiromesifen	0.100	0.200	Not Detected
Fenoxycarb	0.100	0.200	Not detected	Spirotetramat	0.100	0.200	Not Detected
Fenpyroximate	0.200	0.400	Not detected	Spiroxamine	0.200	0.400	Not Detected
Fipronil	0.200	0.400	Not detected	Tebuconazole	0.200	0.400	Not Detected
Flonicamid	0.500	1.000	Not detected	Thiacloprid	0.100	0.200	Not Detected
Fludioxonil	0.200	0.400	Not detected	Thiamethoxam	0.100	0.200	Not Detected
				Trifloxystrobin	0.100	0.200	Not Detected

[Rogue Research Lab LLC](#)
[218 E. Main Street, Rogue River, OR 97537 Tel.](#)
[541-582-1962](#)
[ORELAP 4107 OLCC 101050708B](#)
[rogueresearchlab.com](#)

Craig Berry - Lab Director
 11/22/21



Results pertain to submitted samples only. Rogue Research Lab LLC makes no claims as to the consumer safety or other risks associated with any detected or non-detected amounts of any pesticides, solvents or other adulterants. This report shall not be reproduced, unless in its entirety, without written approval from Rogue Research Lab LLC. Samples were received in good condition and all QC samples met acceptance criteria of the method; data available upon request. Pesticide testing provided for information only as the sample was not obtained using regulated sampling methods.



Certificate of Analysis

Client Fields of Hemp
 Sample Bordeaux
 Sample ID 21111620713

Pesticides Batch 211113-01 QA Recovery limits

Analyte	%Recovery	Recovery limits	Analyte	%Recovery	Recovery limits
Abamectin	57.1	50-100	Hexythiazox	57.1	50-100
Acephate	73.8	50-100	Imazalil	73.8	50-100
Acequinocyl	106.3	50-100	Imidacloprid	106.3	50-100
Acetamiprid	124.0	50-100	Kresoxim Methyl	124.0	50-100
Aldicarb	53.3	50-100	Malathion	53.3	50-100
Azoxystrobin	105.0	50-100	Metalaxyl	105.0	50-100
Bifenazate	118.3	50-100	Methiocarb	118.3	50-100
Bifenthrin	90.6	50-100	Methomyl	90.6	50-100
Boscalid	83.3	50-100	Methyl Parathion	83.3	50-100
Carbaryl	120.6	50-100	MGK-264	120.6	50-100
Carbofuran	62.1	50-100	Myclobutanil	62.1	50-100
Chlorantraniliprole	129.8	50-100	Naled	129.8	50-100
Chlorfenapyr	98.6	50-100	Oxamyl	98.6	50-100
Chlorpyrifos	58.0	50-100	Paclbutrazol	58.0	50-100
Clofentezine	108.1	50-100	Permethrins	108.1	50-100
Cyfluthrin	113.7	50-100	Phosmet	113.7	50-100
Cypermethrin	141.3	50-100	Piperonyl Butoxide	141.3	50-100
Daminozide	103.4	50-100	Prallethrin	103.4	50-100
DDVP	140.6	50-100	Propiconazole	140.6	50-100
Diazinon	62.1	50-100	Propoxur	62.1	50-100
Dimethoate	143.8	50-100	Pyrethrins	143.8	50-100
Ethoprophos	117.4	50-100	Pyridaben	117.4	50-100
Etofenprox	139.1	50-100	Spinosad	139.1	50-100
Etoxazole	112.4	50-100	Spiromesifen	112.4	50-100
Fenoxycarb	111.6	50-100	Spirotetramat	111.6	50-100
Fenpyroximate	139.8	50-100	Spiroxamine	139.8	50-100
Fipronil	97.2	50-100	Tebuconazole	97.2	50-100
Fonicamid	115.2	50-100	Thiacloprid	115.2	50-100
Fludioxonil	109.0	50-100	Thiamethoxam	109.0	50-100
			Trifloxystrobin	121.7	50-100

[Rogue Research Lab LLC](#)
[218 E. Main Street, Rogue River, OR 97537 541-582-1962](#)
[ORELAP 4107 OLCC 101050708B](#)
[rogueresearchlab.com](#)

Craig Berry - Lab Director
 11/22/21



Results pertain to submitted samples only. Rogue Research Lab LLC makes no claims as to the consumer safety or other risks associated with any detected or non-detected amounts of any pesticides, solvents or other adulterants. This report shall not be reproduced, unless in its entirety, without written approval from Rogue Research Lab LLC. Samples were received in good condition and all QC samples met acceptance criteria of the method; data available upon request. Pesticide testing provided for information only as the sample was not obtained using regulated sampling methods.