

## Fields of Hemp

Sample AC/DC

Strain

<b>0.00%</b>	<b>17.07%</b>	<b>20.18%</b>
$\Delta$ 9 THC	Total CBD	<b>Total Cannabinoids</b>
<b>Not tested</b>	<b>Pass</b>	<b>201.8</b>
Water Activity	<b>8.37</b> Moisture	<b>mg / g Total Cannabinoids</b>



Sample ID **21101500653**

Matrix Flower

Metric

Harvest/Prod Date

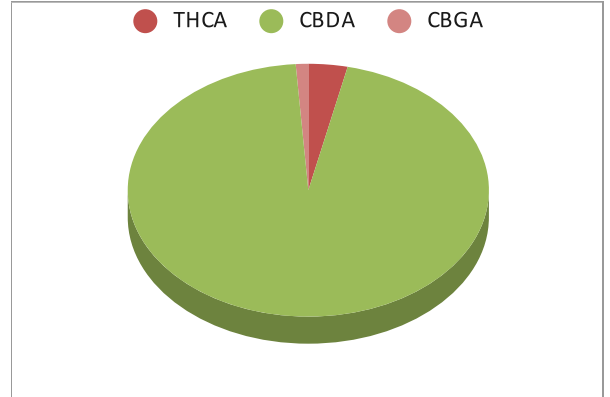
Report Created 10/22/2021

Results Valid Until 10/22/2022

Sample Extracted  
10/18/2021 9:30


Sample Analyzed  
10/18/2021 11:39

Cannabinoids	%Weight	mg/ gram	LOQ(% /w)
$\Delta$ 9 THC	<b>0.00</b>	0.0	0.09
THCA	0.71	7.1	0.09
CBDA	19.25	192.5	0.09
CBD	0.00	0.0	0.09
CBN	0.00	0.0	0.09
‡ $\Delta$ 8 THC	0.00	0.0	0.09
‡ CBC	0.00	0.0	0.09
‡ CBGA	0.23	2.3	0.09
‡ CBG	0.00	0.0	0.09



Total THC and Total CBD are calculated values per OAR 333-064-0100. Cannabinoid values for plant matter samples are reported on a dry weight basis. Water activity action level is 0.65Aw. LOQ= Limit of Quantitation. NR=Not Reported 0.00 = Not Detected above LOQ

[Rogue Research Lab LLC](#)  
[218 E. Main Street, Rogue River, OR 97537](#)  
[Tel. 541-582-1962](#)  
[ORELAP 4107 OLCC 101050708B](#)  
[rogue-research-lab.com](#)

  
 Craig Berry - Lab Director  
 10/22/21

Results pertain to submitted samples only. Rogue Research Lab LLC makes no claims as to the consumer safety or other risks associated with any detected or non-detected amounts of any pesticides, solvents or other adulterants. This report shall not be reproduced, unless in its entirety, without written approval from Rogue Research Lab LLC. Samples were received in good condition and all QC samples met acceptance criteria of the method; data available upon request. Analytes accompanied by dagger (‡) are not within the scope of accreditation and are for informational purposes only.

Client Fields of Hemp  
 Sample AC/DC  
 Sample ID 21101500653

Sample Extracted  
 01/14/21 9:01

**Pesticides** Batch 211018-01 **Results** Detected Pesticides shown in **Red**

Analyte	LOQ, PPM	Limit, PPM	Status	Analyte	LOQ, PPM	Limit, PPM	Status
Abamectin	0.250	0.500	Not detected	Hexythiazox	0.500	1.000	Not Detected
Acephate	0.200	0.400	Not detected	Imazalil	0.100	0.200	Not Detected
Acequinocyl	1.000	2.000	Not detected	Imidacloprid	0.200	0.400	Not Detected
Acetamiprid	0.100	0.200	Not detected	Kresoxim Methyl	0.200	0.400	Not Detected
Aldicarb	0.200	0.400	Not detected	Malathion	0.100	0.200	Not Detected
Azoxystrobin	0.100	0.200	Not detected	Metalaxyl	0.100	0.200	Not Detected
Bifenazate	0.100	0.200	Not detected	Methiocarb	0.100	0.200	Not Detected
Bifenthrin	0.100	0.200	Not detected	Methomyl	0.200	0.400	Not Detected
Boscalid	0.200	0.400	Not detected	Methyl Parathion	0.100	0.200	Not Detected
Carbaryl	0.100	0.200	Not detected	MGK-264	0.100	0.200	Not Detected
Carbofuran	0.100	0.200	Not detected	Myclobutanil	0.100	0.200	Not Detected
Chlorantraniliprole	0.100	0.200	Not detected	Naled	0.500	1.000	Not Detected
Chlorfenapyr	0.500	1.000	Not detected	Oxamyl	0.500	1.000	Not Detected
Chlorpyrifos	0.100	0.200	Not detected	Paclobutrazol	0.200	0.400	Not Detected
Clofentezine	0.100	0.200	Not detected	Permethrins	0.100	0.200	Not Detected
Cyfluthrin	0.500	1.000	Not detected	Phosmet	0.100	0.200	Not Detected
Cypermethrin	0.500	1.000	Not detected	Piperonyl Butoxide	1.000	2.000	Not Detected
Daminozide	0.500	1.000	Not detected	Prallethrin	0.100	0.200	Not Detected
DDVP	0.500	1.000	Not detected	Propiconazole	0.200	0.400	Not Detected
Diazinon	0.100	0.200	Not detected	Propoxur	0.100	0.200	Not Detected
Dimethoate	0.100	0.200	Not detected	Pyrethrins	0.500	1.000	Not Detected
Ethoprophos	0.100	0.200	Not detected	Pyridaben	0.100	0.200	Not Detected
Etofenprox	0.200	0.400	Not detected	Spinosad	0.100	0.200	Not Detected
Etoxazole	0.100	0.200	Not detected	Spiromesifen	0.100	0.200	Not Detected
Fenoxycarb	0.100	0.200	Not detected	Spirotetramat	0.100	0.200	Not Detected
Fenpyroximate	0.200	0.400	Not detected	Spiroxamine	0.200	0.400	Not Detected
Fipronil	0.200	0.400	Not detected	Tebuconazole	0.200	0.400	Not Detected
Fonicamid	0.500	1.000	Not detected	Thiacloprid	0.100	0.200	Not Detected
Fludioxonil	0.200	0.400	Not detected	Thiamethoxam	0.100	0.200	Not Detected
				Trifloxystrobin	0.100	0.200	Not Detected

[Rogue Research Lab LLC](#)  
[218 E. Main Street, Rogue River, OR 97537](#)  
[Tel. 541-582-1962](#)  
[ORELAP 4107 OLCC 101050708B](#)  
[rogueresearchlab.com](#)



Craig Berry - Lab Director  
 10/22/21


**ROGUE RESEARCH LAB**

Results pertain to submitted samples only. Rogue Research Lab LLC makes no claims as to the consumer safety or other risks associated with any detected or non-detected amounts of any pesticides, solvents or other adulterants. This report shall not be reproduced, unless in its entirety, without written approval from Rogue Research Lab LLC. Samples were received in good condition and all QC samples met acceptance criteria of the method; data available upon request. Pesticide testing provided for information only as the sample was not obtained using regulated sampling methods.

Client Fields of Hemp  
 Sample AC/DC  
 Sample ID 21101500653

**Pesticides** Batch 211018-01 QA Recovery limits

Analyte	%Recovery	Recovery limits	Analyte	%Recovery	Recovery limits
Abamectin	134.4	50-100	Hexythiazox	102.2	50-100
Acephate	98.5	50-100	Imazalil	104.8	50-100
Acequinocyl	98.0	50-100	Imidacloprid	103.0	50-100
Acetamiprid	80.4	50-100	Kresoxim Methyl	91.6	50-100
Aldicarb	88.2	50-100	Malathion	108.2	50-100
Azoxystrobin	80.6	50-100	Metalaxyl	93.2	50-100
Bifenazate	78.5	50-100	Methiocarb	121.6	50-100
Bifenthrin	65.3	50-100	Methomyl	151.8	50-100
Boscalid	75.8	50-100	Methyl Parathion	67.4	50-100
Carbaryl	92.3	50-100	MGK-264	102.7	50-100
Carbofuran	77.6	50-100	Myclobutanil	95.1	50-100
Chlorantraniliprole	112.0	50-100	Naled	88.8	50-100
Chlorfenapyr	88.1	50-100	Oxamyl	95.6	50-100
Chlorpyrifos	132.3	50-100	Paclobutrazol	107.1	50-100
Clofentezine	113.5	50-100	Permethrins	161.1	50-100
Cyfluthrin	94.4	50-100	Phosmet	97.5	50-100
Cypermethrin	88.6	50-100	Piperonyl Butoxide	77.9	50-100
Daminozide	101.1	50-100	Prallethrin	51.3	50-100
DDVP	83.9	50-100	Propiconazole	102.7	50-100
Diazinon	89.5	50-100	Propoxur	109.2	50-100
Dimethoate	87.9	50-100	Pyrethrins	116.6	50-100
Ethoprophos	94.1	50-100	Pyridaben	95.6	50-100
Etofenprox	112.1	50-100	Spinosad	128.1	50-100
Etoxazole	100.1	50-100	Spiromesifen	80.5	50-100
Fenoxycarb	103.3	50-100	Spirotetramat	106.3	50-100
Fenpyroximate	85.5	50-100	Spiroxamine	77.0	50-100
Fipronil	65.3	50-100	Tebuconazole	107.4	50-100
Flonicamid	81.1	50-100	Thiacloprid	82.6	50-100
Fludioxonil	110.7	50-100	Thiamethoxam	109.4	50-100
			Trifloxystrobin	88.6	50-100

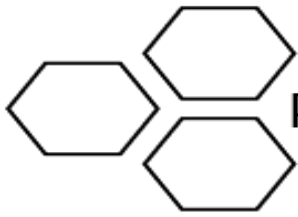
[Rogue Research Lab LLC](#)  
[218 E. Main Street, Rogue River, OR 97537](#)  
[541-582-1962](#)  
[ORELAP 4107 OLCC 101050708B](#)  
[rogueresearchlab.com](#)



Craig Berry - Lab Director  
 10/22/21


**ROGUE RESEARCH LAB**

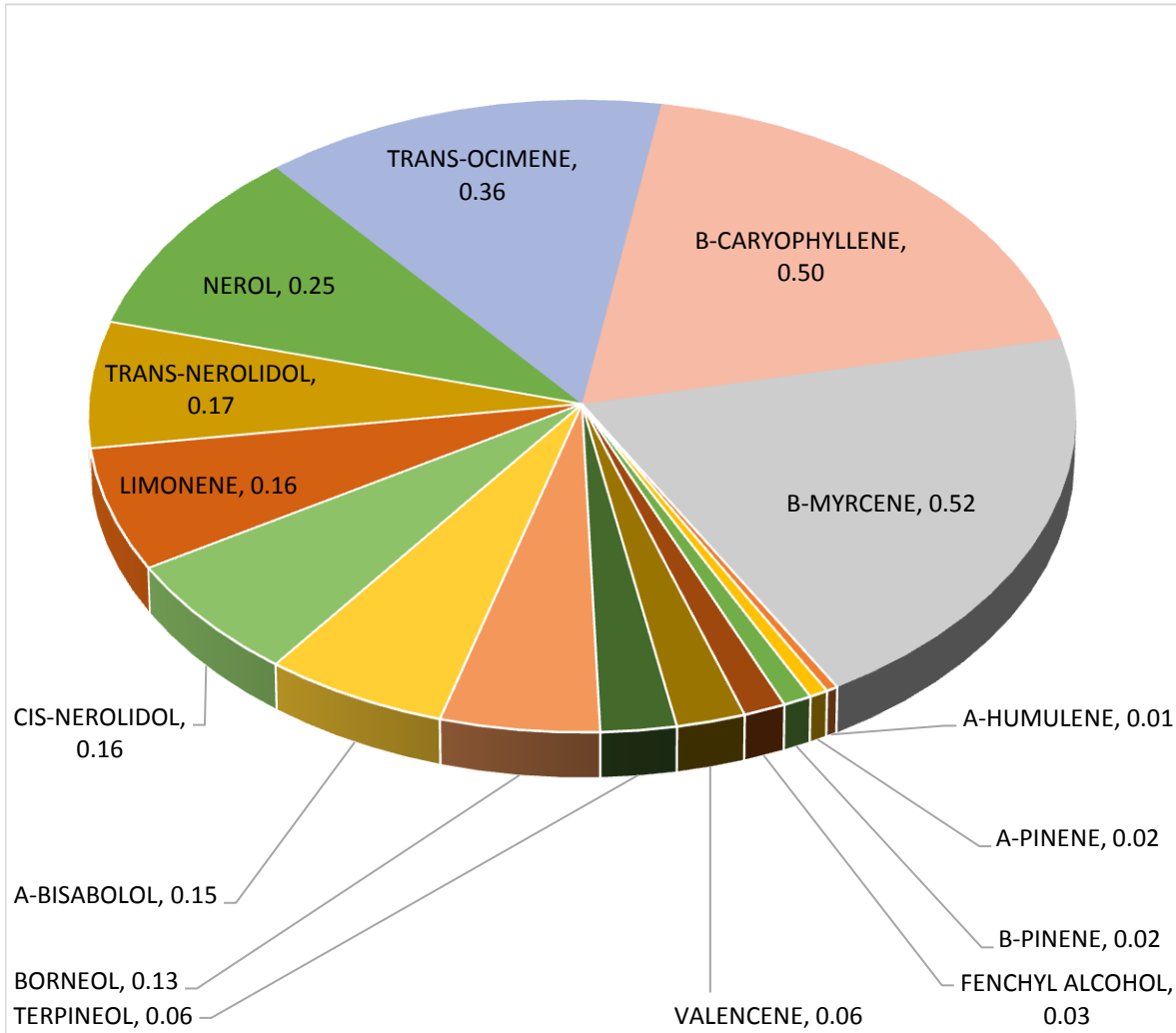
Results pertain to submitted samples only. Rogue Research Lab LLC makes no claims as to the consumer safety or other risks associated with any detected or non-detected amounts of any pesticides, solvents or other adulterants. This report shall not be reproduced, unless in its entirety, without written approval from Rogue Research Lab LLC. Samples were received in good condition and all QC samples met acceptance criteria of the method; data available upon request. Pesticide testing provided for information only as the sample was not obtained using regulated sampling methods.



# Terpene Analysis

**Customer** Fields of Hemp  
**Sample Name** AC/DC  
**File Name** 21101500653  
**Date/Time Extracted:** 10/18/2021 08:30  
**Date/Time Analyzed:** 10/18/2021 12:36  
**Analysis Method/SOP:** LO 001R7/I52121R

TESTED FOR : A-BISABOLOL, A-CEDRENE, A-HUMULENE, A-PHELLANDRENE, A-PINENE, A-TERPINENE, B-CARYOPHYLLENE, B-MYRCENE, BORNEOL, B-PINENE, CAMPHENE, CAMPHOR, CARYOPHYLLENE OXIDE, CEDROL, CIS-NEROLIDOL, D-CARENE, DL-MENTHOL, EUCALYPTOL, FARNESENE, R&L FENCHONE, FENCHYL ALCOHOL, GERANIOL, GERANYL ACETATE, G-TERPINENE, GUAJOL, ISOBORNEOL, ISOPULEGOL, LIMONENE, LINALOOL, NEROL, OCIMENE, P-CYMENE, PULEGONE, SABINENE, TERPINEOL, TERPINOLENE, TRANS-NEROLIDOL, TRANS-OCIMENE, VALENCENE.



*Craig Berry*  
Craig Berry - Lab Director

10/22/2021

Terpene total w/w%

2.61