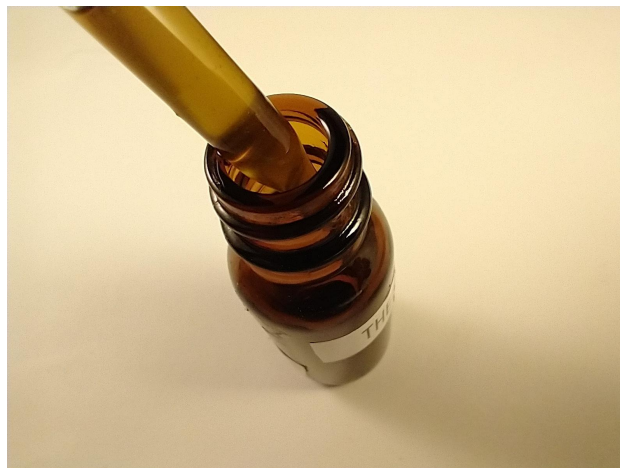




Certificate of Analysis

Sample Therapy 3.0



For Research and Development Only

Client Fields of Hemp
Sample ID 21070930518
Matrix Tincture
Serving size 0.5 g (500 mg)

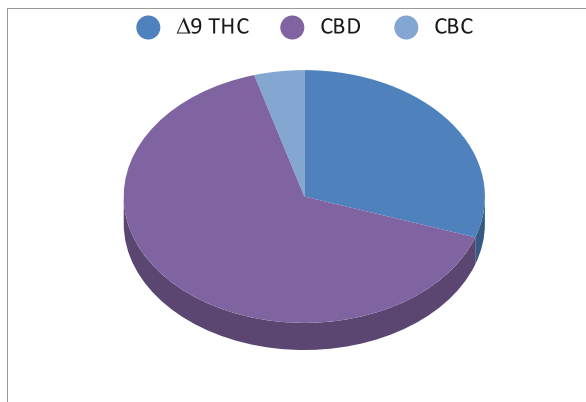
Report Created 7/13/2021 Results Valid Until 7/13/2022

Sample Extracted
7/13/2021 18:45

Sample Analyzed
7/13/2021 21:36


Cannabinoids %Weight Mg per serving

Δ9 THC	0.138	0.69
Total THC (THCA*0.877)+9THC	0.138	0.69
Total CBD (CBDA*0.877)+CBD	0.297	1.49
THCA	0.000	0.00
CBDA	0.000	0.00
CBD	0.297	1.49
CBN	0.000	0.00
‡ Δ8 THC	0.000	0.00
‡ CBC	0.020	0.10
‡ CBGA	0.000	0.00
‡ CBG	0.000	0.0
Total Measured Cannabinoids	0.455	2.28



Total THC and Total CBD are calculated values per OAR 333-064-0100. Cannabinoid values for plant matter samples are reported on a dry weight basis. Water activity action level is 0.65Aw. LOQ= Limit of Quantitation. NR=Not Reported ND= Not Detected above LOQ

[Rogue Research Lab LLC](#)
[218 E. Main Street, Rogue River, OR 97537](#)
[Tel. 541-582-1962](#)
[ORELAP 4107 OLCC 101050708B](#)
[rogueresearchlab.com](#)


Craig Berry - Lab Director



Results pertain to submitted samples only. Rogue Research Lab LLC makes no claims as to the consumer safety or other risks associated with any detected or non-detected amounts of any pesticides, solvents or other adulterants. This report shall not be reproduced, unless in its entirety, without written approval from Rogue Research Lab LLC. Samples were received in good condition and all QC samples met acceptance criteria of the method; data available upon request. Analytes accompanied by dagger (‡) are not within the scope of accreditation and are for informational purposes only.