

Fields of Hemp

Sample Limeade

Strain

0.70%	18.90%	22.41%
Total THC	Total CBD	Total Cannabinoids
Not tested	Pass	224.1
Water Activity	8.43 Moisture	mg / g Total Cannabinoids



Sample ID **21040600377**

Matrix Flower

Metric

Harvest/Prod Date

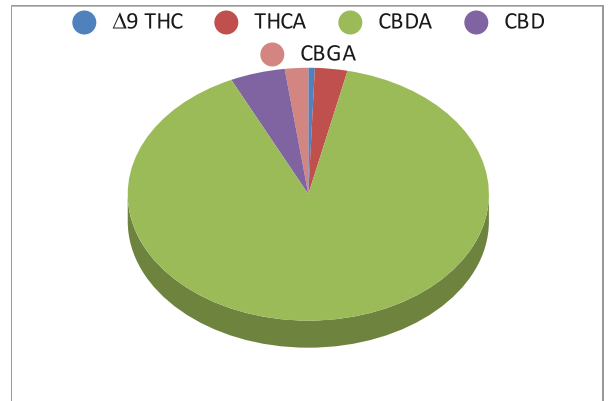
Report Created 4/28/2021

Results Valid Until 4/28/2022

Sample Extracted
4/21/2021 8:15


Sample Analyzed
4/21/2021 13:13

Cannabinoids	%Weight	mg/ gram	LOQ(% /w)
Δ9 THC	0.13	1.3	0.08
THCA	0.65	6.5	0.08
CBDA	20.06	200.6	0.08
CBD	1.10	11.0	0.08
CBN	0.00	0.0	0.08
‡ Δ8 THC	0.00	0.0	0.08
‡ CBC	0.00	0.0	0.08
‡ CBGA	0.47	4.7	0.08
‡ CBG	0.00	0.0	0.08



Total THC and Total CBD are calculated values per OAR 333-064-0100. Cannabinoid values for plant matter samples are reported on a dry weight basis. Water activity action level is 0.65Aw. LOQ= Limit of Quantitation. NR=Not Reported 0.00 = Not Detected above LOQ

[Rogue Research Lab LLC](#)
[218 E. Main Street, Rogue River, OR 97537](#)
[Tel. 541-582-1962](#)
[ORELAP 4107 OLCC 101050708B](#)
[rogue-research-lab.com](#)


 Craig Berry - Lab Director
 4/28/21

Results pertain to submitted samples only. Rogue Research Lab LLC makes no claims as to the consumer safety or other risks associated with any detected or non-detected amounts of any pesticides, solvents or other adulterants. This report shall not be reproduced, unless in its entirety, without written approval from Rogue Research Lab LLC. Samples were received in good condition and all QC samples met acceptance criteria of the method; data available upon request. Analytes accompanied by dagger (‡) are not within the scope of accreditation and are for informational purposes only.

Client Fields of Hemp
 Sample Limeade
 Sample ID 21040600377

Sample Extracted
 11/28/20 10:10

Pesticides Batch 210427-01 **Results**

Detected Pesticides shown in **Red**

Analyte	LOQ, PPM	Limit, PPM	Status	Analyte	LOQ, PPM	Limit, PPM	Status
Abamectin	0.250	0.500	Not detected	Hexythiazox	0.500	1.000	Not Detected
Acephate	0.200	0.400	Not detected	Imazalil	0.100	0.200	Not Detected
Acequinocyl	1.000	2.000	Not detected	Imidacloprid	0.200	0.400	Not Detected
Acetamiprid	0.100	0.200	Not detected	Kresoxim Methyl	0.200	0.400	Not Detected
Aldicarb	0.200	0.400	Not detected	Malathion	0.100	0.200	Not Detected
Azoxystrobin	0.100	0.200	Not detected	Metalaxyl	0.100	0.200	Not Detected
Bifenazate	0.100	0.200	Not detected	Methiocarb	0.100	0.200	Not Detected
Bifenthrin	0.100	0.200	Not detected	Methomyl	0.200	0.400	Not Detected
Boscalid	0.200	0.400	Not detected	Methyl Parathion	0.100	0.200	Not Detected
Carbaryl	0.100	0.200	Not detected	MGK-264	0.100	0.200	Not Detected
Carbofuran	0.100	0.200	Not detected	Myclobutanil	0.100	0.200	Not Detected
Chlorantraniliprole	0.100	0.200	Not detected	Naled	0.500	1.000	Not Detected
Chlorfenapyr	0.500	1.000	Not detected	Oxamyl	0.500	1.000	Not Detected
Chlorpyrifos	0.100	0.200	Not detected	Paclobutrazol	0.200	0.400	Not Detected
Clofentezine	0.100	0.200	Not detected	Permethrins	0.100	0.200	Not Detected
Cyfluthrin	0.500	1.000	Not detected	Phosmet	0.100	0.200	Not Detected
Cypermethrin	0.500	1.000	Not detected	Piperonyl Butoxide	1.000	2.000	Not Detected
Daminozide	0.500	1.000	Not detected	Prallethrin	0.100	0.200	Not Detected
DDVP	0.500	1.000	Not detected	Propiconazole	0.200	0.400	Not Detected
Diazinon	0.100	0.200	Not detected	Propoxur	0.100	0.200	Not Detected
Dimethoate	0.100	0.200	Not detected	Pyrethrins	0.500	1.000	Not Detected
Ethoprophos	0.100	0.200	Not detected	Pyridaben	0.100	0.200	Not Detected
Etofenprox	0.200	0.400	Not detected	Spinosad	0.100	0.200	Not Detected
Etoazole	0.100	0.200	Not detected	Spiromesifen	0.100	0.200	Not Detected
Fenoxycarb	0.100	0.200	Not detected	Spirotetramat	0.100	0.200	Not Detected
Fenpyroximate	0.200	0.400	Not detected	Spiroxamine	0.200	0.400	Not Detected
Fipronil	0.200	0.400	Not detected	Tebuconazole	0.200	0.400	Not Detected
Fonicamid	0.500	1.000	Not detected	Thiacloprid	0.100	0.200	Not Detected
Fludioxonil	0.200	0.400	Not detected	Thiamethoxam	0.100	0.200	Not Detected
				Trifloxystrobin	0.100	0.200	Not Detected

[Rogue Research Lab LLC](#)
[218 E. Main Street, Rogue River, OR 97537](#)
 Tel. 541-582-1962
[ORELAP 4107 OLCC 101050708B](#)
[rogueresearchlab.com](#)



Craig Berry - Lab Director
 4/28/21

Results pertain to submitted samples only. Rogue Research Lab LLC makes no claims as to the consumer safety or other risks associated with any detected or non-detected amounts of any pesticides, solvents or other adulterants. This report shall not be reproduced, unless in its entirety, without written approval from Rogue Research Lab LLC. Samples were received in good condition and all QC samples met acceptance criteria of the method; data available upon request. Pesticide testing provided for information only as the sample was not obtained using regulated sampling methods.

Client Fields of Hemp
Sample Limeade
Sample ID 21040600377

Pesticides Batch 210427-01 QA Recovery limits

Analyte	%Recovery	Recovery limits	Analyte	%Recovery	Recovery limits
Abamectin	112.3	50-100	Hexythiazox	113.2	50-100
Acephate	85.1	50-100	Imazalil	105.4	50-100
Acequinocyl	33.1	50-100 *	Imidacloprid	83.6	50-100
Acetamiprid	130.3	50-100	Kresoxim Methyl	77.8	50-100
Aldicarb	129.4	50-100	Malathion	72.1	50-100
Azoxystrobin	90.3	50-100	Metalaxyl	85.6	50-100
Bifenazate	69.6	50-100	Methiocarb	69.9	50-100
Bifenthrin	63.8	50-100	Methomyl	64.4	50-100
Boscalid	85.6	50-100	Methyl Parathion	65.6	50-100
Carbaryl	123.7	50-100	MGK-264	77.6	50-100
Carbofuran	79.2	50-100	Myclobutanil	73.5	50-100
Chlorantraniliprole	132.2	50-100	Naled	68.5	50-100
Chlorfenapyr	75.7	50-100	Oxamyl	101.4	50-100
Chlorpyrifos	85.3	50-100	Paclobutrazol	98.8	50-100
Clofentezine	64.4	50-100	Permethrins	112.5	50-100
Cyfluthrin	116.8	50-100	Phosmet	101.0	50-100
Cypermethrin	73.2	50-100	Piperonyl Butoxide	102.6	50-100
Daminozide	90.7	50-100	Prallethrin	100.7	50-100
DDVP	79.8	50-100	Propiconazole	136.9	50-100
Diazinon	90.6	50-100	Propoxur	101.4	50-100
Dimethoate	108.6	50-100	Pyrethrins	112.3	50-100
Ethoprophos	71.8	50-100	Pyridaben	110.6	50-100
Etofenprox	135.8	50-100	Spinosad	129.1	50-100
Etoxazole	111.4	50-100	Spiromesifen	92.3	50-100
Fenoxycarb	131.2	50-100	Spirotetramat	95.1	50-100
Fenpyroximate	126.8	50-100	Spiroxamine	117.2	50-100
Fipronil	90.4	50-100	Tebuconazole	98.1	50-100
Flonicamid	67.3	50-100	Thiacloprid	127.9	50-100
Fludioxonil	120.0	50-100	Thiamethoxam	72.7	50-100
			Trifloxystrobin	112.9	50-100

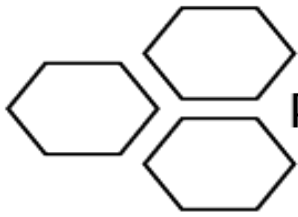
[Rogue Research Lab LLC](#)
[218 E. Main Street, Rogue River, OR 97537](#)
[541-582-1962](#)
[ORELAP 4107](#) [OLCC 101050708B](#)
[rogue researchlab.com](#)



Craig Berry - Lab Director
4/28/21


ROGUE RESEARCH LAB

Results pertain to submitted samples only. Rogue Research Lab LLC makes no claims as to the consumer safety or other risks associated with any detected or non-detected amounts of any pesticides, solvents or other adulterants. This report shall not be reproduced, unless in its entirety, without written approval from Rogue Research Lab LLC. Samples were received in good condition and all QC samples met acceptance criteria of the method; data available upon request. Pesticide testing provided for information only as the sample was not obtained using regulated sampling methods. Exceeded limit, no action required.



Terpene Analysis

Customer Fields of Hemp
Sample Name Limeade
File Name 21040600377
Date/Time Extracted: 4/21/2021 10:13
Date/Time Analyzed: 4/22/2021 9:32
Analysis Method/SOP: SOP LO-012R1/R191118

TESTED FOR : (-) BORNEOL,(+) BORNEOL, A-BISABOLOL, A-CEDRENE, A-HUMULENE, A-PHELLANDRENE, A-TERPINENE,A-TERPINEOL,B-CARYOPHYLLENE,B-MYRCENE,A-PINENE,B-PINENE, 3-CARENE,CAMPHENE,(1R) (+) (-)CAMPHOR, 1S)(-)(-)CAMPHOR, CAMPHOR, CARYOPHYLLENE OXIDE, CEDROL,CIS-NEROLIDOL, DL-MENTHOL ,EUCALYPTOL, FARNESENE,(-) FENCHONE, (+) FENCHONE,FENCHYL ALCOHOL,GERANIOL, GERANYL ACETATE,TERPINENE, GUAIIOL,ISOBORNEOL,ISOPULEGOL, LIMONENE,LINALOOL,NEROL, OCIMENE, PULELONE, SABINENE, SABINENE HYDRATE, TERPINOLENE, TRANS-NEROLIDOL,VALENCENE.

