

Fields of Hemp

Sample JJ's Dream

Strain

| | | |
|-------------------|-------------------------|--------------------------------------|
| 0.66% | 18.48% | 21.79% |
| Total THC | Total CBD | Total Cannabinoids |
| Not tested | Pass | 217.9 |
| Water Activity | 7.28 Moisture | mg / g Total Cannabinoids |



Sample ID **21040530311**

Matrix Flower

Metric

Harvest/Prod Date

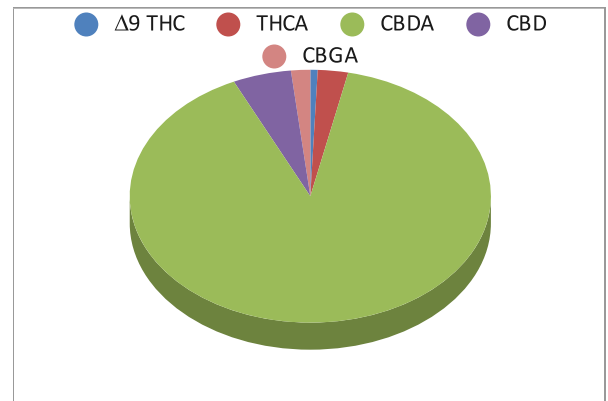
Report Created 4/15/2021

Results Valid Until 4/15/2022

Sample Extracted
4/13/2021 8:15


Sample Analyzed
4/13/2021 11:38

| Cannabinoids | %Weight | mg/ gram | LOQ(% /w) |
|---------------|-------------|----------|-----------|
| Δ9 THC | 0.14 | 1.4 | 0.09 |
| THCA | 0.59 | 5.9 | 0.09 |
| CBDA | 19.54 | 195.4 | 0.09 |
| CBD | 1.14 | 11.4 | 0.09 |
| CBN | 0.00 | 0.0 | 0.09 |
| ‡ Δ8 THC | 0.00 | 0.0 | 0.09 |
| ‡ CBC | 0.00 | 0.0 | 0.09 |
| ‡ CBGA | 0.38 | 3.8 | 0.09 |
| ‡ CBG | 0.00 | 0.0 | 0.09 |



Total THC and Total CBD are calculated values per OAR 333-064-0100. Cannabinoid values for plant matter samples are reported on a dry weight basis. Water activity action level is 0.65Aw. LOQ= Limit of Quantitation. NR=Not Reported 0.00 = Not Detected above LOQ

[Rogue Research Lab LLC](http://RogueResearchLab.com)
[218 E. Main Street, Rogue River, OR 97537](http://218.E.MainStreet,RogueRiver,OR97537)
[Tel. 541-582-1962](http://Tel.541-582-1962)
[ORELAP 4107 OLCC 101050708B](http://ORELAP4107_OLCC101050708B)
rogue-research-lab.com


 Craig Berry - Lab Director
 4/15/21

Results pertain to submitted samples only. Rogue Research Lab LLC makes no claims as to the consumer safety or other risks associated with any detected or non-detected amounts of any pesticides, solvents or other adulterants. This report shall not be reproduced, unless in its entirety, without written approval from Rogue Research Lab LLC. Samples were received in good condition and all QC samples met acceptance criteria of the method; data available upon request. Analytes accompanied by dagger (‡) are not within the scope of accreditation and are for informational purposes only.

Client Fields of Hemp
 Sample JJ's Dream
 Sample ID 21040530311

Sample Extracted
 11/28/20 10:10

Pesticides Batch 210414-01 **Results**

Detected Pesticides shown in **Red**

| Analyte | LOQ, PPM | Limit, PPM | Status | Analyte | LOQ, PPM | Limit, PPM | Status |
|---------------------|----------|------------|--------------|--------------------|----------|------------|--------------|
| Abamectin | 0.250 | 0.500 | Not detected | Hexythiazox | 0.500 | 1.000 | Not Detected |
| Acephate | 0.200 | 0.400 | Not detected | Imazalil | 0.100 | 0.200 | Not Detected |
| Acequinocyl | 1.000 | 2.000 | Not detected | Imidacloprid | 0.200 | 0.400 | Not Detected |
| Acetamiprid | 0.100 | 0.200 | Not detected | Kresoxim Methyl | 0.200 | 0.400 | Not Detected |
| Aldicarb | 0.200 | 0.400 | Not detected | Malathion | 0.100 | 0.200 | Not Detected |
| Azoxystrobin | 0.100 | 0.200 | Not detected | Metalaxyl | 0.100 | 0.200 | Not Detected |
| Bifenazate | 0.100 | 0.200 | Not detected | Methiocarb | 0.100 | 0.200 | Not Detected |
| Bifenthrin | 0.100 | 0.200 | Not detected | Methomyl | 0.200 | 0.400 | Not Detected |
| Boscalid | 0.200 | 0.400 | Not detected | Methyl Parathion | 0.100 | 0.200 | Not Detected |
| Carbaryl | 0.100 | 0.200 | Not detected | MGK-264 | 0.100 | 0.200 | Not Detected |
| Carbofuran | 0.100 | 0.200 | Not detected | Myclobutanil | 0.100 | 0.200 | Not Detected |
| Chlorantraniliprole | 0.100 | 0.200 | Not detected | Naled | 0.500 | 1.000 | Not Detected |
| Chlorfenapyr | 0.500 | 1.000 | Not detected | Oxamyl | 0.500 | 1.000 | Not Detected |
| Chlorpyrifos | 0.100 | 0.200 | Not detected | Paclobutrazol | 0.200 | 0.400 | Not Detected |
| Clofentezine | 0.100 | 0.200 | Not detected | Permethrins | 0.100 | 0.200 | Not Detected |
| Cyfluthrin | 0.500 | 1.000 | Not detected | Phosmet | 0.100 | 0.200 | Not Detected |
| Cypermethrin | 0.500 | 1.000 | Not detected | Piperonyl Butoxide | 1.000 | 2.000 | Not Detected |
| Daminozide | 0.500 | 1.000 | Not detected | Prallethrin | 0.100 | 0.200 | Not Detected |
| DDVP | 0.500 | 1.000 | Not detected | Propiconazole | 0.200 | 0.400 | Not Detected |
| Diazinon | 0.100 | 0.200 | Not detected | Propoxur | 0.100 | 0.200 | Not Detected |
| Dimethoate | 0.100 | 0.200 | Not detected | Pyrethrins | 0.500 | 1.000 | Not Detected |
| Ethoprophos | 0.100 | 0.200 | Not detected | Pyridaben | 0.100 | 0.200 | Not Detected |
| Etofenprox | 0.200 | 0.400 | Not detected | Spinosad | 0.100 | 0.200 | Not Detected |
| Etoazole | 0.100 | 0.200 | Not detected | Spiromesifen | 0.100 | 0.200 | Not Detected |
| Fenoxycarb | 0.100 | 0.200 | Not detected | Spirotetramat | 0.100 | 0.200 | Not Detected |
| Fenpyroximate | 0.200 | 0.400 | Not detected | Spiroxamine | 0.200 | 0.400 | Not Detected |
| Fipronil | 0.200 | 0.400 | Not detected | Tebuconazole | 0.200 | 0.400 | Not Detected |
| Fonicamid | 0.500 | 1.000 | Not detected | Thiacloprid | 0.100 | 0.200 | Not Detected |
| Fludioxonil | 0.200 | 0.400 | Not detected | Thiamethoxam | 0.100 | 0.200 | Not Detected |
| | | | | Trifloxystrobin | 0.100 | 0.200 | Not Detected |

Rogue Research Lab LLC
218 E. Main Street, Rogue River, OR 97537
Tel. 541-582-1962
ORELAP 4107 OLCC 101050708B
rogue researchlab.com



Craig Berry - Lab Director
 4/15/21

Results pertain to submitted samples only. Rogue Research Lab LLC makes no claims as to the consumer safety or other risks associated with any detected or non-detected amounts of any pesticides, solvents or other adulterants. This report shall not be reproduced, unless in its entirety, without written approval from Rogue Research Lab LLC. Samples were received in good condition and all QC samples met acceptance criteria of the method; data available upon request. Pesticide testing provided for information only as the sample was not obtained using regulated sampling methods.

Client Fields of Hemp
 Sample JJ's Dream
 Sample ID 21040530311

Pesticides Batch 210414-01 QA Recovery limits

| Analyte | %Recovery | Recovery limits | Analyte | %Recovery | Recovery limits |
|---------------------|-----------|-----------------|--------------------|-----------|-----------------|
| Abamectin | 97.6 | 50-100 | Hexythiazox | 79.8 | 50-100 |
| Acephate | 85.0 | 50-100 | Imazalil | 135.2 | 50-100 |
| Acequinocyl | 103.7 | 50-100 | Imidacloprid | 97.0 | 50-100 |
| Acetamiprid | 136.2 | 50-100 | Kresoxim Methyl | 113.9 | 50-100 |
| Aldicarb | 83.8 | 50-100 | Malathion | 115.7 | 50-100 |
| Azoxystrobin | 106.1 | 50-100 | Metalaxyl | 148.2 | 50-100 |
| Bifenazate | 120.0 | 50-100 | Methiocarb | 91.1 | 50-100 |
| Bifenthrin | 105.3 | 50-100 | Methomyl | 63.9 | 50-100 |
| Boscalid | 140.1 | 50-100 | Methyl Parathion | 97.1 | 50-100 |
| Carbaryl | 127.1 | 50-100 | MGK-264 | 68.1 | 50-100 |
| Carbofuran | 74.5 | 50-100 | Myclobutanil | 60.8 | 50-100 |
| Chlorantraniliprole | 107.4 | 50-100 | Naled | 67.2 | 50-100 |
| Chlorfenapyr | 106.7 | 50-100 | Oxamyl | 132.0 | 50-100 |
| Chlorpyrifos | 72.6 | 50-100 | Paclobutrazol | 105.9 | 50-100 |
| Clofentezine | 99.5 | 50-100 | Permethrins | 71.4 | 50-100 |
| Cyfluthrin | 111.1 | 50-100 | Phosmet | 87.5 | 50-100 |
| Cypermethrin | 70.2 | 50-100 | Piperonyl Butoxide | 66.1 | 50-100 |
| Daminozide | 96.6 | 50-100 | Prallethrin | 73.3 | 50-100 |
| DDVP | 60.4 | 50-100 | Propiconazole | 68.8 | 50-100 |
| Diazinon | 55.5 | 50-100 | Propoxur | 121.1 | 50-100 |
| Dimethoate | 63.0 | 50-100 | Pyrethrins | 59.6 | 50-100 |
| Ethoprophos | 72.0 | 50-100 | Pyridaben | 67.2 | 50-100 |
| Etofenprox | 90.5 | 50-100 | Spinosad | 62.3 | 50-100 |
| Etoxazole | 78.7 | 50-100 | Spiromesifen | 129.7 | 50-100 |
| Fenoxycarb | 78.4 | 50-100 | Spirotetramat | 87.9 | 50-100 |
| Fenpyroximate | 76.4 | 50-100 | Spiroxamine | 96.0 | 50-100 |
| Fipronil | 51.2 | 50-100 | Tebuconazole | 71.5 | 50-100 |
| Flonicamid | 21.0 | 50-100 * | Thiacloprid | 65.0 | 50-100 |
| Fludioxonil | 90.5 | 50-100 | Thiamethoxam | 84.4 | 50-100 |
| | | | Trifloxystrobin | 52.1 | 50-100 |

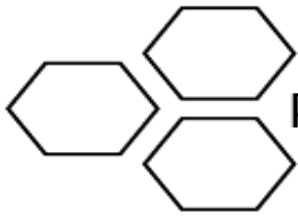
Rogue Research Lab LLC
218 E. Main Street, Rogue River, OR 97537
541-582-1962
ORELAP 4107 OLCC 101050708B
rogueresearchlab.com



Craig Berry - Lab Director
 4/15/21


ROGUE RESEARCH LAB

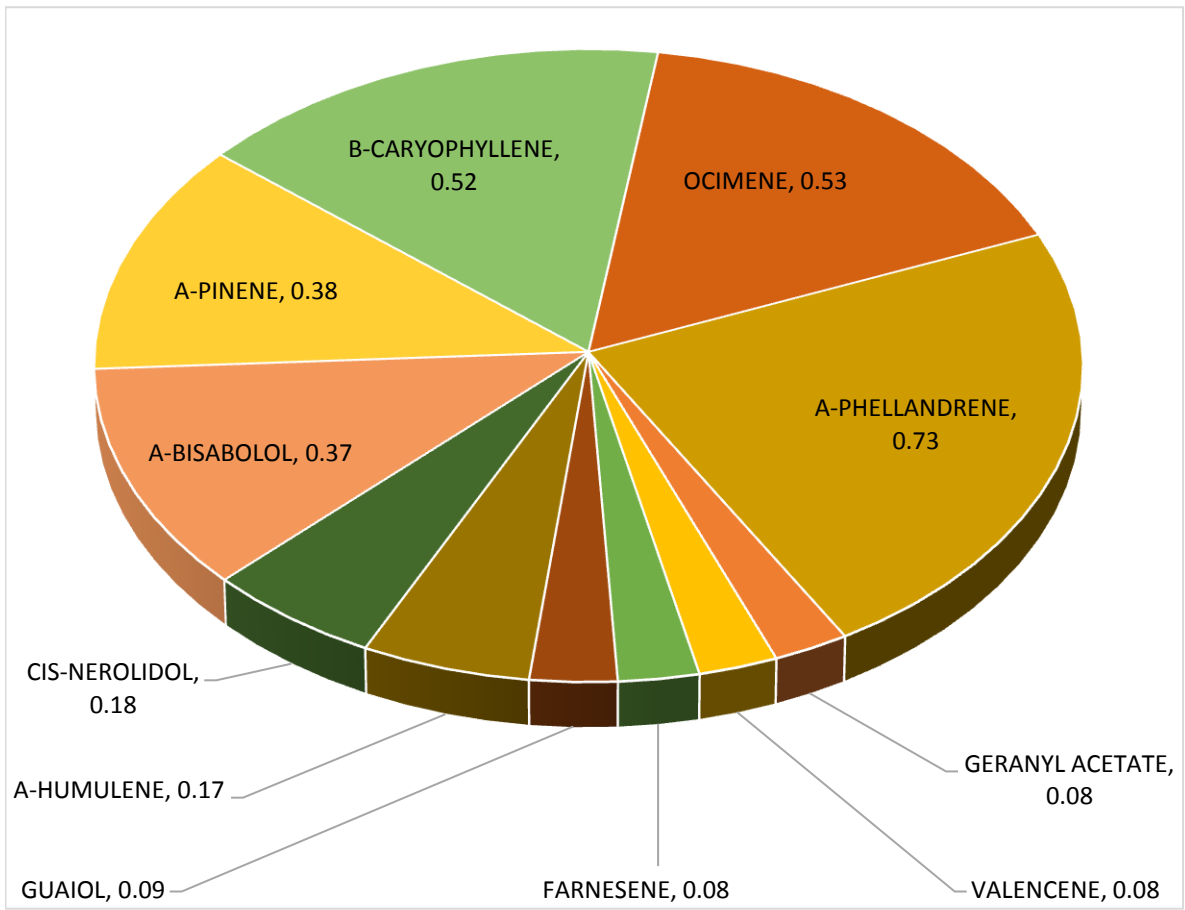
Results pertain to submitted samples only. Rogue Research Lab LLC makes no claims as to the consumer safety or other risks associated with any detected or non-detected amounts of any pesticides, solvents or other adulterants. This report shall not be reproduced, unless in its entirety, without written approval from Rogue Research Lab LLC. Samples were received in good condition and all QC samples met acceptance criteria of the method; data available upon request. Pesticide testing provided for information only as the sample was not obtained using regulated sampling methods. Exceeded limit, no action required.



Terpene Analysis

Customer Fields of Hemp
Sample Name JJ's Dream
File Name 21040530311
Date/Time Extracted: 4/13/2021 8:05
Date/Time Analyzed: 4/13/2021 11:25
Analysis Method/SOP: SOP LO-012R1/R191118

TESTED FOR : (-) BORNEOL,(+) BORNEOL, A-BISABOLOL, A-CEDRENE, A-HUMULENE, A-PHELLANDRENE, A-TERPINENE,A-TERPINEOL,B-CARYOPHYLLENE,B-MYRCENE,A-PINENE,B-PINENE, 3-CARENE,CAMPHENE,(1R) (+) (-)CAMPHOR, 1S)(-)(-)CAMPHOR, CAMPHOR, CARYOPHYLLENE OXIDE, CEDROL,CIS-NEROLIDOL, DL-MENTHOL ,EUCALYPTOL, FARNESENE,(-) FENCHONE, (+) FENCHONE,FENCHYL ALCOHOL,GERANIOL, GERANYL ACETATE,TERPINENE, GUAIOL,ISOBORNEOL,ISOPULEGOL, LIMONENE,LINALOOL,NEROL, OCIMENE, PULELONE, SABINENE, SABINENE HYDRATE, TERPINOLENE, TRANS-NEROLIDOL,VALENCENE.




Craig Berry - Lab Director 4/15/2021

Terpene total w/w% 3.20