

Fields of Hemp

Sample Goliath

Strain

0.36%	12.07%	13.98%
Total THC	Total CBD	Total Cannabinoids
Not tested	Pass	139.8
Water Activity	12.99 Moisture	mg / g Total Cannabinoids



Sample ID **21040530310**

Matrix Flower

Metric

Harvest/Prod Date

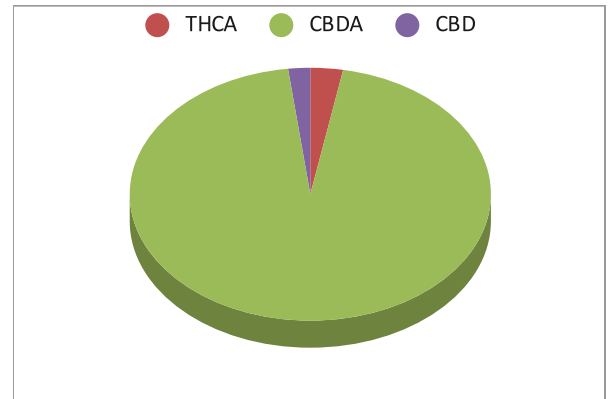
Report Created 4/15/2021

Results Valid Until 4/15/2022

Sample Extracted
4/13/2021 8:15


Sample Analyzed
4/13/2021 11:26

Cannabinoids	%Weight	mg/ gram	LOQ(% /w)
Δ9 THC	0.00	0.0	0.09
THCA	0.41	4.1	0.09
CBDA	13.30	133.0	0.09
CBD	0.28	2.8	0.09
CBN	0.00	0.0	0.09
‡ Δ8 THC	0.00	0.0	0.09
‡ CBC	0.00	0.0	0.09
‡ CBGA	0.00	0.0	0.09
‡ CBG	0.00	0.0	0.09



Total THC and Total CBD are calculated values per OAR 333-064-0100. Cannabinoid values for plant matter samples are reported on a dry weight basis. Water activity action level is 0.65Aw. LOQ= Limit of Quantitation. NR=Not Reported 0.00 = Not Detected above LOQ

[Rogue Research Lab LLC](#)
[218 E. Main Street, Rogue River, OR 97537](#)
[Tel. 541-582-1962](#)
[ORELAP 4107 OLCC 101050708B](#)
[rogue-research-lab.com](#)


 Craig Berry - Lab Director
 4/15/21

Results pertain to submitted samples only. Rogue Research Lab LLC makes no claims as to the consumer safety or other risks associated with any detected or non-detected amounts of any pesticides, solvents or other adulterants. This report shall not be reproduced, unless in its entirety, without written approval from Rogue Research Lab LLC. Samples were received in good condition and all QC samples met acceptance criteria of the method; data available upon request. Analytes accompanied by dagger (‡) are not within the scope of accreditation and are for informational purposes only.

Client Fields of Hemp
 Sample Goliath
 Sample ID 21040530310

Sample Extracted
 11/28/20 10:10

Pesticides Batch 210414-01 **Results**

Detected Pesticides shown in **Red**

Analyte	LOQ, PPM	Limit, PPM	Status	Analyte	LOQ, PPM	Limit, PPM	Status
Abamectin	0.250	0.500	Not detected	Hexythiazox	0.500	1.000	Not Detected
Acephate	0.200	0.400	Not detected	Imazalil	0.100	0.200	Not Detected
Acequinocyl	1.000	2.000	Not detected	Imidacloprid	0.200	0.400	Not Detected
Acetamiprid	0.100	0.200	Not detected	Kresoxim Methyl	0.200	0.400	Not Detected
Aldicarb	0.200	0.400	Not detected	Malathion	0.100	0.200	Not Detected
Azoxystrobin	0.100	0.200	Not detected	Metalaxyl	0.100	0.200	Not Detected
Bifenazate	0.100	0.200	Not detected	Methiocarb	0.100	0.200	Not Detected
Bifenthrin	0.100	0.200	Not detected	Methomyl	0.200	0.400	Not Detected
Boscalid	0.200	0.400	Not detected	Methyl Parathion	0.100	0.200	Not Detected
Carbaryl	0.100	0.200	Not detected	MGK-264	0.100	0.200	Not Detected
Carbofuran	0.100	0.200	Not detected	Myclobutanil	0.100	0.200	Not Detected
Chlorantraniliprole	0.100	0.200	Not detected	Naled	0.500	1.000	Not Detected
Chlorfenapyr	0.500	1.000	Not detected	Oxamyl	0.500	1.000	Not Detected
Chlorpyrifos	0.100	0.200	Not detected	Paclobutrazol	0.200	0.400	Not Detected
Clofentezine	0.100	0.200	Not detected	Permethrins	0.100	0.200	Not Detected
Cyfluthrin	0.500	1.000	Not detected	Phosmet	0.100	0.200	Not Detected
Cypermethrin	0.500	1.000	Not detected	Piperonyl Butoxide	1.000	2.000	Not Detected
Daminozide	0.500	1.000	Not detected	Prallethrin	0.100	0.200	Not Detected
DDVP	0.500	1.000	Not detected	Propiconazole	0.200	0.400	Not Detected
Diazinon	0.100	0.200	Not detected	Propoxur	0.100	0.200	Not Detected
Dimethoate	0.100	0.200	Not detected	Pyrethrins	0.500	1.000	Not Detected
Ethoprophos	0.100	0.200	Not detected	Pyridaben	0.100	0.200	Not Detected
Etofenprox	0.200	0.400	Not detected	Spinosad	0.100	0.200	Not Detected
Etoxazole	0.100	0.200	Not detected	Spiromesifen	0.100	0.200	Not Detected
Fenoxycarb	0.100	0.200	Not detected	Spirotetramat	0.100	0.200	Not Detected
Fenpyroximate	0.200	0.400	Not detected	Spiroxamine	0.200	0.400	Not Detected
Fipronil	0.200	0.400	Not detected	Tebuconazole	0.200	0.400	Not Detected
Fonicamid	0.500	1.000	Not detected	Thiacloprid	0.100	0.200	Not Detected
Fludioxonil	0.200	0.400	Not detected	Thiamethoxam	0.100	0.200	Not Detected
				Trifloxystrobin	0.100	0.200	Not Detected

Rogue Research Lab LLC
218 E. Main Street, Rogue River, OR 97537
Tel. 541-582-1962
ORELAP 4107 OLCC 101050708B
rogue researchlab.com



Craig Berry - Lab Director
 4/15/21


ROGUE RESEARCH LAB

Results pertain to submitted samples only. Rogue Research Lab LLC makes no claims as to the consumer safety or other risks associated with any detected or non-detected amounts of any pesticides, solvents or other adulterants. This report shall not be reproduced, unless in its entirety, without written approval from Rogue Research Lab LLC. Samples were received in good condition and all QC samples met acceptance criteria of the method; data available upon request. Pesticide testing provided for information only as the sample was not obtained using regulated sampling methods.

Client Fields of Hemp
 Sample Goliath
 Sample ID 21040530310

Pesticides Batch 210414-01 QA Recovery limits

Analyte	%Recovery	Recovery limits	Analyte	%Recovery	Recovery limits
Abamectin	97.6	50-100	Hexythiazox	79.8	50-100
Acephate	85.0	50-100	Imazalil	135.2	50-100
Acequinocyl	103.7	50-100	Imidacloprid	97.0	50-100
Acetamiprid	136.2	50-100	Kresoxim Methyl	113.9	50-100
Aldicarb	83.8	50-100	Malathion	115.7	50-100
Azoxystrobin	106.1	50-100	Metalaxyl	148.2	50-100
Bifenazate	120.0	50-100	Methiocarb	91.1	50-100
Bifenthrin	105.3	50-100	Methomyl	63.9	50-100
Boscalid	140.1	50-100	Methyl Parathion	97.1	50-100
Carbaryl	127.1	50-100	MGK-264	68.1	50-100
Carbofuran	74.5	50-100	Myclobutanil	60.8	50-100
Chlorantraniliprole	107.4	50-100	Naled	67.2	50-100
Chlorfenapyr	106.7	50-100	Oxamyl	132.0	50-100
Chlorpyrifos	72.6	50-100	Paclobutrazol	105.9	50-100
Clofentezine	99.5	50-100	Permethrins	71.4	50-100
Cyfluthrin	111.1	50-100	Phosmet	87.5	50-100
Cypermethrin	70.2	50-100	Piperonyl Butoxide	66.1	50-100
Daminozide	96.6	50-100	Prallethrin	73.3	50-100
DDVP	60.4	50-100	Propiconazole	68.8	50-100
Diazinon	55.5	50-100	Propoxur	121.1	50-100
Dimethoate	63.0	50-100	Pyrethrins	59.6	50-100
Ethoprophos	72.0	50-100	Pyridaben	67.2	50-100
Etofenprox	90.5	50-100	Spinosad	62.3	50-100
Etoxazole	78.7	50-100	Spiromesifen	129.7	50-100
Fenoxycarb	78.4	50-100	Spirotetramat	87.9	50-100
Fenpyroximate	76.4	50-100	Spiroxamine	96.0	50-100
Fipronil	51.2	50-100	Tebuconazole	71.5	50-100
Flonicamid	21.0	50-100 *	Thiacloprid	65.0	50-100
Fludioxonil	90.5	50-100	Thiamethoxam	84.4	50-100
			Trifloxystrobin	52.1	50-100

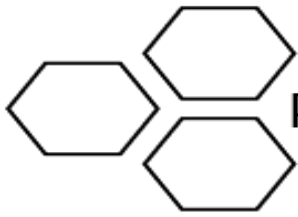
Rogue Research Lab LLC
218 E. Main Street, Rogue River, OR 97537
541-582-1962
ORELAP 4107 OLCC 101050708B
rogue research lab.com



Craig Berry - Lab Director
 4/15/21


ROGUE RESEARCH LAB

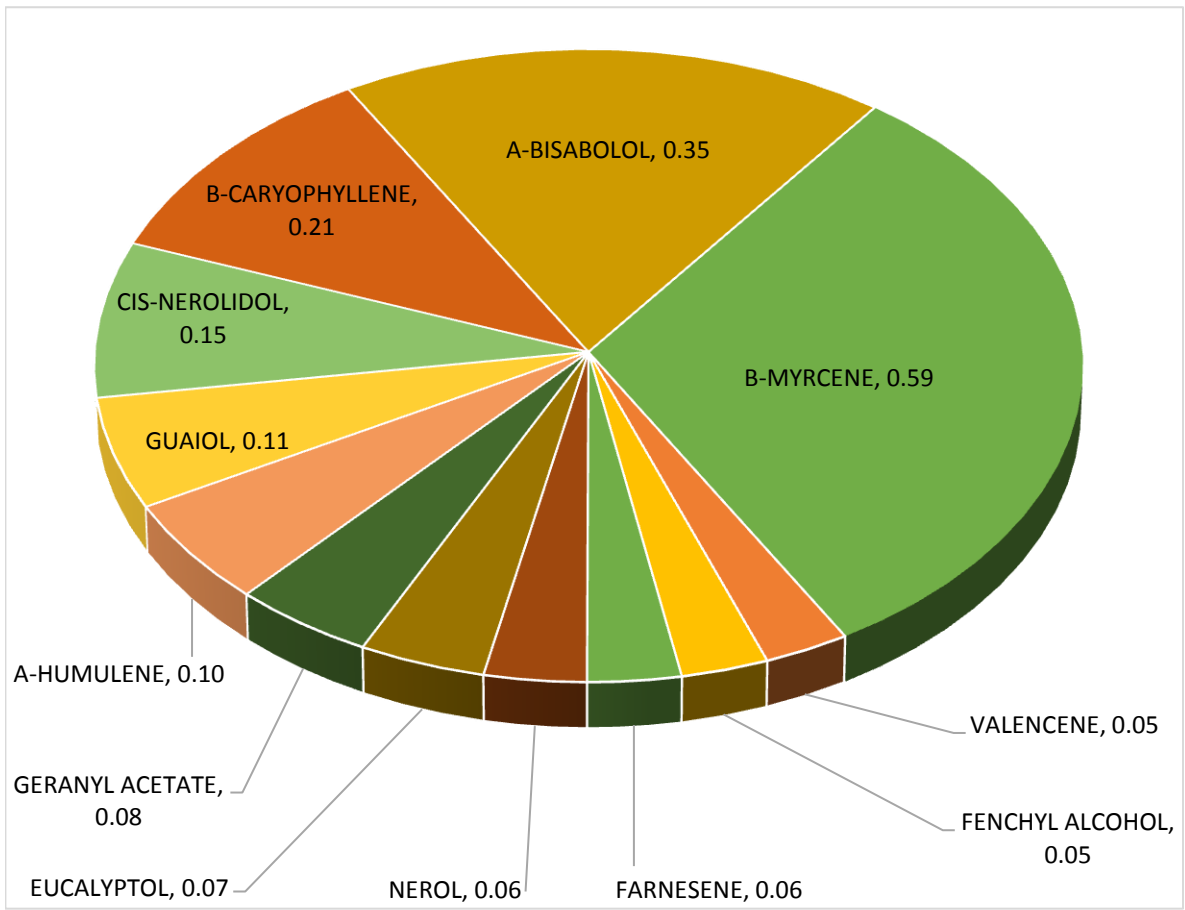
Results pertain to submitted samples only. Rogue Research Lab LLC makes no claims as to the consumer safety or other risks associated with any detected or non-detected amounts of any pesticides, solvents or other adulterants. This report shall not be reproduced, unless in its entirety, without written approval from Rogue Research Lab LLC. Samples were received in good condition and all QC samples met acceptance criteria of the method; data available upon request. Pesticide testing provided for information only as the sample was not obtained using regulated sampling methods. Exceeded limit, no action required.



Terpene Analysis

Customer Fields of Hemp
Sample Name Goliath
File Name 21040530310
Date/Time Extracted: 4/13/2021 8:05
Date/Time Analyzed: 4/13/2021 10:31
Analysis Method/SOP: SOP LO-012R1/R191118

TESTED FOR : (-) BORNEOL,(+) BORNEOL, A-BISABOLOL, A-CEDRENE, A-HUMULENE, A-PHELLANDRENE, A-TERPINENE,A-TERPINEOL,B-CARYOPHYLLENE,B-MYRCENE,A-PINENE,B-PINENE,
3-CARENE,CAMPHEME,(1R) (+) (-)CAMPHOR,
1S)(-)(-)CAMPHOR, CAMPHOR, CARYOPHYLLENE OXIDE,
CEDROL,CIS-NEROLIDOL, DL-MENTHOL ,EUCALYPTOL,
FARNESENE,(-) FENCHONE, (+) FENCHONE,FENCHYL ALCOHOL,GERANIOL, GERANYL ACETATE,TERPINENE,
GUAIIOL,ISOBORNEOL,ISOPULEGOL,
LIMONENE,LINALOOL,NEROL, OCIMENE, PULELONE,
SABINENE, SABINENE HYDRATE, TERPINOLENE,
TRANS-NEROLIDOL,VALENCENE.



Craig Berry - Lab Director

4/15/2021

Terpene total w/w%

1.88