

Fields of Hemp

Sample Abacus

Strain

0.09%	23.63%	27.83%
Δ 9 THC	Total CBD	Total Cannabinoids
Not tested	Pass	278.3
Water Activity	9.21 Moisture	mg / g Total Cannabinoids



Sample ID **20123240785**

Matrix Flower

Metric

Harvest/Prod Date

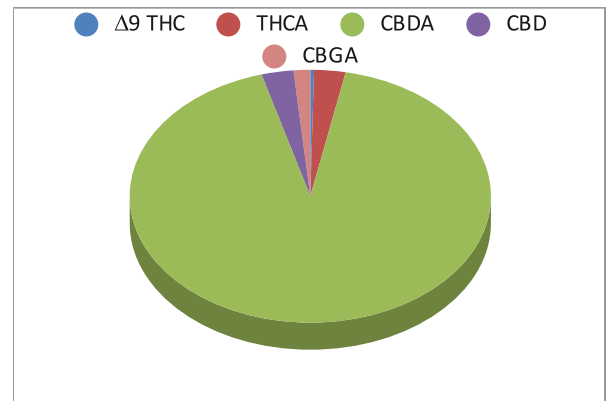
Report Created 12/22/2020

Results Valid Until 12/22/2021

Sample Extracted
12/22/2020 9:15


Sample Analyzed
12/22/2020 12:32

Cannabinoids	%Weight	mg/ gram	LOQ(% /w)
Δ 9 THC	0.09	0.9	0.09
THCA	0.78	7.8	0.09
CBDA	25.74	257.4	0.09
CBD	0.80	8.0	0.09
CBN	0.00	0.0	0.09
‡ Δ 8 THC	0.00	0.0	0.09
‡ CBC	0.00	0.0	0.09
‡ CBGA	0.42	4.2	0.09
‡ CBG	0.00	0.0	0.09



Total THC and Total CBD are calculated values per OAR 333-064-0100. Cannabinoid values for plant matter samples are reported on a dry weight basis. Water activity action level is 0.65Aw. LOQ= Limit of Quantitation. NR=Not Reported 0.00 = Not Detected above LOQ

[Rogue Research Lab LLC](#)
[218 E. Main Street, Rogue River, OR 97537](#)
[Tel. 541-582-1962](#)
[ORELAP 4107 OLCC 101050708B](#)
[rogue-research-lab.com](#)


 Craig Berry - Lab Director
 12/22/20

Results pertain to submitted samples only. Rogue Research Lab LLC makes no claims as to the consumer safety or other risks associated with any detected or non-detected amounts of any pesticides, solvents or other adulterants. This report shall not be reproduced, unless in its entirety, without written approval from Rogue Research Lab LLC. Samples were received in good condition and all QC samples met acceptance criteria of the method; data available upon request. Analytes accompanied by dagger (‡) are not within the scope of accreditation and are for informational purposes only.



Client Fields of Hemp
Sample Abacus
Sample ID 20123240785

These test results are for Research and Development purposes only

Sample Extracted
11/28/20 10:10

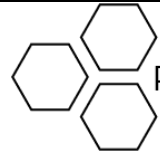
Pesticides Batch 201216-01 **Results**

Detected Pesticides shown in Red

Analyte	LOQ, PPM	Limit, PPM	Status	Analyte	LOQ, PPM	Limit, PPM	Status
Abamectin	0.250	0.500	Not detected	Hexythiazox	0.500	1.000	Not Detected
Acephate	0.200	0.400	Not detected	Imazalil	0.100	0.200	Not Detected
Acequinocyl	1.000	2.000	Not detected	Imidacloprid	0.200	0.400	Not Detected
Acetamiprid	0.100	0.200	Not detected	Kresoxim Methyl	0.200	0.400	Not Detected
Aldicarb	0.200	0.400	Not detected	Malathion	0.100	0.200	Not Detected
Azoxystrobin	0.100	0.200	Not detected	Metalaxyl	0.100	0.200	Not Detected
Bifenazate	0.100	0.200	Not detected	Methiocarb	0.100	0.200	Not Detected
Bifenthrin	0.100	0.200	Not detected	Methomyl	0.200	0.400	Not Detected
Boscalid	0.200	0.400	Not detected	Methyl Parathion	0.100	0.200	Not Detected
Carbaryl	0.100	0.200	Not detected	MGK-264	0.100	0.200	Not Detected
Carbofuran	0.100	0.200	Not detected	Myclobutanil	0.100	0.200	Not Detected
Chlorantraniliprole	0.100	0.200	Not detected	Naled	0.500	1.000	Not Detected
Chlorfenapyr	0.500	1.000	Not detected	Oxamyl	0.500	1.000	Not Detected
Chlorpyrifos	0.100	0.200	Not detected	Paclobutrazol	0.200	0.400	Not Detected
Clofentezine	0.100	0.200	Not detected	Permethrins	0.100	0.200	Not Detected
Cyfluthrin	0.500	1.000	Not detected	Phosmet	0.100	0.200	Not Detected
Cypermethrin	0.500	1.000	Not detected	Piperonyl Butoxide	1.000	2.000	Not Detected
Daminozide	0.500	1.000	Not detected	Prallethrin	0.100	0.200	Not Detected
DDVP	0.500	1.000	Not detected	Propiconazole	0.200	0.400	Not Detected
Diazinon	0.100	0.200	Not detected	Propoxur	0.100	0.200	Not Detected
Dimethoate	0.100	0.200	Not detected	Pyrethrins	0.500	1.000	Not Detected
Ethoprophos	0.100	0.200	Not detected	Pyridaben	0.100	0.200	Not Detected
Etofenprox	0.200	0.400	Not detected	Spinosad	0.100	0.200	Not Detected
Etoazole	0.100	0.200	Not detected	Spiromesifen	0.100	0.200	Not Detected
Fenoxycarb	0.100	0.200	Not detected	Spirotetramat	0.100	0.200	Not Detected
Fenpyroximate	0.200	0.400	Not detected	Spiroxamine	0.200	0.400	Not Detected
Fipronil	0.200	0.400	Not detected	Tebuconazole	0.200	0.400	Not Detected
Fonicamid	0.500	1.000	Not detected	Thiacloprid	0.100	0.200	Not Detected
Fludioxonil	0.200	0.400	Not detected	Thiamethoxam	0.100	0.200	Not Detected
				Trifloxystrobin	0.100	0.200	Not Detected

[Rogue Research Lab LLC](#)
[218 E. Main Street, Rogue River, OR 97537](#)
[Tel. 541-582-1962](#)
[ORELAP 4107 OLCC 101050708B](#)
[rogueresearchlab.com](#)

Craig Berry - Lab Director
12/22/20



Results pertain to submitted samples only. Rogue Research Lab LLC makes no claims as to the consumer safety or other risks associated with any detected or non-detected amounts of any pesticides, solvents or other adulterants. This report shall not be reproduced, unless in its entirety, without written approval from Rogue Research Lab LLC. Samples were received in good condition and all QC samples met acceptance criteria of the method; data available upon request. Pesticide testing provided for information only as the sample was not obtained using regulated sampling methods.

Client Fields of Hemp
 Sample Abacus
 Sample ID 20123240785

These test results are for Research and Development purposes only

Pesticides Batch 021128-01 QA Recovery limits

Analyte	%Recovery	Recovery limits	Analyte	%Recovery	Recovery limits
Abamectin	53.1	50-100	Hexythiazox	64.1	50-100
Acephate	84.4	50-100	Imazalil	95.0	50-100
Acequinocyl	98.2	50-100	Imidacloprid	92.8	50-100
Acetamiprid	78.1	50-100	Kresoxim Methyl	82.9	50-100
Aldicarb	85.7	50-100	Malathion	79.1	50-100
Azoxystrobin	103.7	50-100	Metalaxyl	79.1	50-100
Bifenazate	106.5	50-100	Methiocarb	83.7	50-100
Bifenthrin	102.2	50-100	Methomyl	56.0	50-100
Boscalid	91.4	50-100	Methyl Parathion	124.1	50-100
Carbaryl	71.3	50-100	MGK-264	93.1	50-100
Carbofuran	85.4	50-100	Myclobutanil	96.6	50-100
Chlorantraniliprole	113.3	50-100	Naled	106.8	50-100
Chlorfenapyr	100.1	50-100	Oxamyl	91.9	50-100
Chlorpyrifos	96.5	50-100	Paclobutrazol	105.9	50-100
Clofentezine	133.2	50-100	Permethrins	101.5	50-100
Cyfluthrin	90.0	50-100	Phosmet	93.6	50-100
Cypermethrin	98.7	50-100	Piperonyl Butoxide	87.9	50-100
Daminozide	129.6	50-100	Prallethrin	94.3	50-100
DDVP	88.3	50-100	Propiconazole	139.6	50-100
Diazinon	120.3	50-100	Propoxur	82.4	50-100
Dimethoate	100.5	50-100	Pyrethrins	98.4	50-100
Ethoprophos	95.8	50-100	Pyridaben	118.7	50-100
Etofenprox	95.8	50-100	Spinosad	91.8	50-100
Etoxazole	89.5	50-100	Spiromesifen	79.7	50-100
Fenoxycarb	56.6	50-100	Spirotetramat	113.9	50-100
Fenpyroximate	103.0	50-100	Spiroxamine	103.6	50-100
Fipronil	91.6	50-100	Tebuconazole	111.7	50-100
Flonicamid	98.6	50-100	Thiacloprid	71.1	50-100
Fludioxonil	90.5	50-100	Thiamethoxam	78.8	50-100
			Trifloxystrobin	89.6	50-100

[Rogue Research Lab LLC](#)
[218 E. Main Street, Rogue River, OR 97537](#)
[541-582-1962](#)
[ORELAP 4107 OLCC 101050708B](#)
[rogue research lab.com](#)



Craig Berry - Lab Director
 12/22/20


ROGUE RESEARCH LAB

Results pertain to submitted samples only. Rogue Research Lab LLC makes no claims as to the consumer safety or other risks associated with any detected or non-detected amounts of any pesticides, solvents or other adulterants. This report shall not be reproduced, unless in its entirety, without written approval from Rogue Research Lab LLC. Samples were received in good condition and all QC samples met acceptance criteria of the method; data available upon request. Pesticide testing provided for information only as the sample was not obtained using regulated sampling methods.