



Green Leaf Lab®

12025 NE Marx St. Portland, OR 97220
503-253-3511 / www.greenleaflabs.com
License#: 10029074C70

Quality Control Testing Official Report

Hawaiian Haze

Sample ID: G0D0104-05

Matrix: Hemp Extracts &

Test ID: 5005033

Source ID:

Date Sampled: 04/06/20

Date Accepted: 04/06/20

Fields of Hemp

Results at a Glance

Total Terpenes : 1.931 % PASS



Russell Kuhfeld

Russell Kuhfeld
Quality Officer - 4/8/2020

All QC samples met acceptance criteria of the method; data available upon request. These results relate only to the sample included on this report. The report may not be reproduced except in full, without the written permission of Green Leaf Lab.

Lab results apply to the sample as received, samples were not collected per OAR 333-007 requirements



Green Leaf Lab

12025 NE Marx St. Portland, OR 97220
503-253-3511 / www.greenleaflabs.com
License#: 10029074C70

Quality Control Testing Official Report

Hawaiian Haze

Sample ID: G0D0104-05

Matrix: Hemp Extracts &

Test ID: 5005033

Source ID:

Date Sampled: 04/06/20

Date Accepted: 04/06/20

Fields of Hemp

Terpene Analysis					
Date/Time Extracted: 04/07/20 13:07			Analysis Method/SOP: 204		
Monoterpenes	%	mg/g	Monoterpenes	%	mg/g
Camphene	0.01950	0.195	Camphor	< LOQ	< LOQ
3-Carene	< LOQ	< LOQ	alpha-Cedrene	< LOQ	< LOQ
Cedrol	< LOQ	< LOQ	Endo-fenchyl alcohol	< LOQ	< LOQ
Eucalyptol	< LOQ	< LOQ	Fenchone	< LOQ	< LOQ
Geraniol	< LOQ	< LOQ	Geranyl acetate	< LOQ	< LOQ
Hexahydrothymol	< LOQ	< LOQ	Isoborneol	< LOQ	< LOQ
Isopulegol	< LOQ	< LOQ	Limonene	0.09509	0.9509
Linalool	< LOQ	< LOQ	p-Mentha-1,5-diene	< LOQ	< LOQ
beta-Myrcene	1.455	14.55	alpha-Pinene	0.09176	0.9176
beta-Pinene	0.04076	0.4076	Pulegone	< LOQ	< LOQ
Sabinene	< LOQ	< LOQ	Sabinene hydrate	< LOQ	< LOQ
gamma-Terpinene	< LOQ	< LOQ	alpha-Terpinene	< LOQ	< LOQ
Terpineol	< LOQ	< LOQ	Terpinolene	< LOQ	< LOQ
B Y-Terpineol	< LOQ	< LOQ	Nerol	< LOQ	< LOQ
A-Terpineol	< LOQ	< LOQ	Borneol	< LOQ	< LOQ
Ocimene isomer II	0.2110	2.11	Ocimene isomer I	< LOQ	< LOQ
Sesquiterpenes	%	mg/g	Sesquiterpenes	%	mg/g
alpha-Bisabolol	< LOQ	< LOQ	beta-Caryophyllene	0.01729	0.1729
Caryophyllene Oxide	< LOQ	< LOQ	Guaiol	< LOQ	< LOQ
alpha-Humulene	< LOQ	< LOQ	trans-Nerolidol	< LOQ	< LOQ
Valencene	< LOQ	< LOQ	cis-Nerolidol	< LOQ	< LOQ
Total Terpenes	1.931	19.31			

<LOQ - Results below the Limit of Quantitation - Terpenes profile/analysis are not accredited to ORELAP TNI 2009 Quality Standards.



Russell Kuhfeld

Russell Kuhfeld
Quality Officer - 4/8/2020

All QC samples met acceptance criteria of the method; data available upon request. These results relate only to the sample included on this report. The report may not be reproduced except in full, without the written permission of Green Leaf Lab.

Lab results apply to the sample as received, samples were not collected per OAR 333-007 requirements



Green Leaf Lab[®]

12025 NE Marx St. Portland, OR 97220
503-253-3511 / www.greenleflabs.com
License#: 10029074C70

Quality Control Testing Official Report

Hawaiian Haze

Sample ID: G0D0104-05

Matrix: Hemp Extracts &

Test ID: 5005033

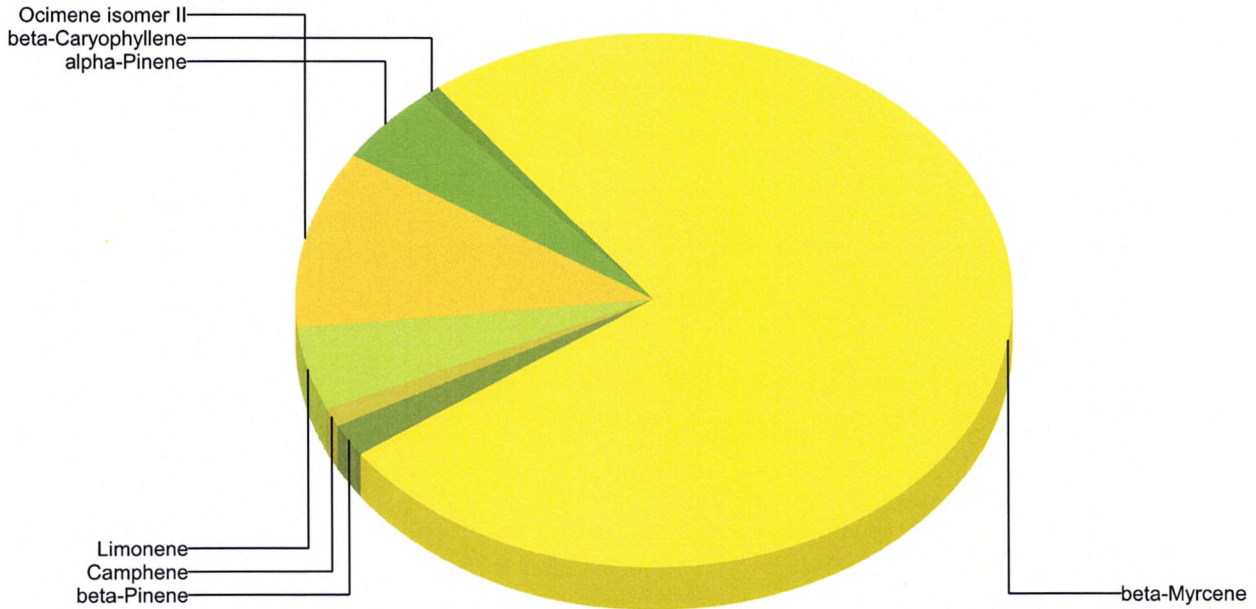
Source ID:

Date Sampled: 04/06/20

Date Accepted: 04/06/20

Fields of Hemp

Terpene Profile



Percentage of Total Terpenes Identified



Russell Kuhfeld

Russell Kuhfeld
Quality Officer - 4/8/2020

All QC samples met acceptance criteria of the method; data available upon request. These results relate only to the sample included on this report. The report may not be reproduced except in full, without the written permission of Green Leaf Lab.

Lab results apply to the sample as received, samples were not collected per OAR 333-007 requirements