

EVIO Labs Medford (pka Kenevir Research)
 540 East Vilas Road, Suite F, Central Point, OR 97502
 541-668-7444 / OLCC 010-1001626980D / www.EVIOLabs.com

Purple Fields Tonic Fields of Hemp Informational Use Only



Confident Cannabis ID: 2003KR0047.1259

Sample ID: M200424-01

Matrix: Hemp

METRC Batch #:

Sampling Method/SOP: Client

Date Sampled: NA

Date Accepted: 03/09/20

Harvest/Process Lot ID:

Batch ID:

Batch Size (g):

Unit for Sale:

Harvest/Production Date:

Cannabinoid Analysis

FOR INFORMATIONAL USE ONLY - NOT FOR REGULATORY PURPOSES

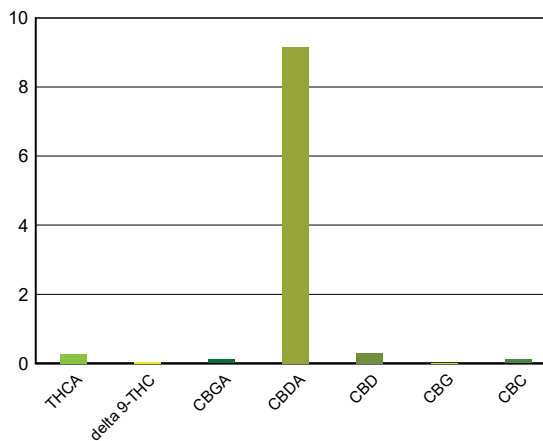
Date/Time Extracted: 03/10/20 11:56

Analysis Method/SOP: SOP.T.40.020

Date/Time Analyzed: 03/10/20 20:45

Cannabinoids	LOQ(%)	mg/g	% weight	Cannabinoid Profile
Total THC ((THCA*0.877)+Δ9THC)		2.34	0.234	
Total CBD ((CBDA*0.877)+CBD)		83.26	8.326	

THCA	0.0400	2.67	0.267
delta 9-THC	0.0400	< LOQ	< LOQ
delta 8-THC	0.0400	< LOQ	< LOQ
THCV	0.0400	< LOQ	< LOQ
CBGA	0.0400	1.11	0.111
CBDA	0.0400	91.60	9.16
CBD	0.0400	2.93	0.293
CBDV	0.0400	< LOQ	< LOQ
CBN	0.0400	< LOQ	< LOQ
CBG	0.0400	< LOQ	< LOQ
CBC	0.0400	1.04	0.104
THCV-A	0.0400	< LOQ	< LOQ
CBDV-A	0.0400	1.93	0.193
Sum of tested Cannabinoids	0.0400	123.00	12.3



Moisture Content

Date/Time Analyzed: 03/09/20 12:52
 Analysis Method/SOP: SOP.T.40.010

Moisture: 10.5 %

"Total THC" and "Total CBD" are calculated values and are an Oregon reporting requirement (OAR 333-064-0100). For Cannabinoid analysis, only delta 9-THC, THCA, CBD, CBDA are ORELAP accredited analytes. Cannabinoid values reported for plant matter are dry weight corrected; Oregon Water Activity action level is 0.65Aw and Oregon Moisture Content action level is 15%, Samples above limit will be highlighted RED; FD = Field Duplicate; LOQ = Limit of Quantitation.

Stephanie Moon
 Laboratory Director - 3/17/2020

EVIO Labs Medford (pka Kenevir Research)
 540 East Vilas Road, Suite F, Central Point, OR 97502
 541-668-7444 / OLCC 010-1001626980D / www.EVIOLabs.com

FOR INFORMATIONAL USE ONLY - NOT FOR REGULATORY PURPOSES

Purple Fields Tonic

Fields of Hemp

Informational Use Only

Sample ID: M200424-01 METRC Batch #:

Matrix: Hemp

Date Sampled: NA

Date Accepted: 03/09/20

Batch ID:

Batch Size:

Sampling Method/SOP: Client

Terpene Analysis

Date/Time Extracted: 03/13/20 10:30

Analysis Method/SOP: SOP.T.40.092

Date/Time Analyzed: 03/16/20 11:16

Analyte	LOQ (%)	Mass (mg/g)	Mass (%)	Analyte	LOQ (%)	Mass (mg/g)	Mass (%)
alpha-Pinene	0.200	0.535	0.0535	beta-Pinene	0.200	0.297	0.0297
Camphene	0.200	< LOQ	< LOQ	Sabinene	0.200	< LOQ	< LOQ
Sabinene hydrate	0.200	< LOQ	< LOQ	beta-Myrcene	0.200	1.69	0.169
p-Mentha-1,5-diene	0.200	< LOQ	< LOQ	(+)-3-Carene	0.200	< LOQ	< LOQ
alpha-Terpinene	0.200	< LOQ	< LOQ	gamma-Terpinene	0.200	< LOQ	< LOQ
Limonene	0.200	0.228	0.0228	Eucalyptol	0.200	< LOQ	< LOQ
Guaiol	0.200	< LOQ	< LOQ	Terpinolene	0.200	1.10	0.11
Linalool	0.200	< LOQ	< LOQ	Camphor	0.200	< LOQ	< LOQ
(+)-Camphor	0.200	< LOQ	< LOQ	(-)-Camphor	0.200	< LOQ	< LOQ
Isopulegol	0.200	< LOQ	< LOQ	Isoborneol	0.200	< LOQ	< LOQ
Borneol	0.200	< LOQ	< LOQ	Hexahydrothymol	0.200	< LOQ	< LOQ
Geraniol	0.200	< LOQ	< LOQ	(+)-Pulegone	0.200	< LOQ	< LOQ
Nerol	0.200	< LOQ	< LOQ	cis-Nerolidol	0.200	< LOQ	< LOQ
trans-Nerolidol	0.200	< LOQ	< LOQ	Geranyl acetate	0.200	< LOQ	< LOQ
alpha-Cedrene	0.200	< LOQ	< LOQ	trans-Caryophyllene	0.200	1.34	0.134
Caryophyllene Oxide	0.200	< LOQ	< LOQ	alpha-Humulene	0.200	0.522	0.0522
Valencene	0.200	< LOQ	< LOQ	alpha-Farnesene	0.200	1.86	0.186
beta-Farnesene	0.200	0.478	0.0478	Cedrol	0.200	< LOQ	< LOQ
alpha-Bisabolol	0.200	0.404	0.0404	Fenchone	0.200	< LOQ	< LOQ
Fenchyl Alcohol	0.200	< LOQ	< LOQ	trans, beta- Ocimene	0.200	< LOQ	< LOQ
beta, cis- Ocimene	0.200	0.300	0.03	Terpineol	0.200	< LOQ	< LOQ
Total (Sum):						8.75	0.88

Analysis performed on GCMS with confirmation ion identification. Terpene analysis is not ORELAP accredited. Results reported as dry weight. LOQ = Limit of Quantitation. Terpene analysis performed in conjunction with EVIO Labs Portland.



Stephanie Moon
 Laboratory Director - 3/17/2020

EVIO Labs Medford (pka Kenevir Research)
 540 East Vilas Road, Suite F, Central Point, OR 97502
 541-668-7444 / OLCC 010-1001626980D / www.EVIOLabs.com

FOR INFORMATIONAL USE ONLY - NOT FOR REGULATORY PURPOSES

Purple Fields Tonic

Fields of Hemp
Informational Use Only

Sample ID: M200424-01

METRC Batch #:

Matrix: Hemp

Date Sampled: NA

Date Accepted: 03/09/20

Batch ID:

Batch Size:

Sampling Method/SOP: Client

Pesticides

Date/Time Extracted: 03/09/20 09:43

Date/Time Analyzed: 3/9/2020 11:19:02PM

Analysis Method/SOP: SOP.T.40.050 / SOP.T.40.051

Analyte	LOQ	Action Level	Result	Units	Type
Abamectin	0.250	0.5	< LOQ	ppm	
Acephate	0.200	0.4	< LOQ	ppm	Organophosphate insecticide
Acequinocyl	1.00	2	< LOQ	ppm	
Acetamiprid	0.100	0.2	< LOQ	ppm	Neonicotinoid insecticide
Aldicarb	0.200	0.4	< LOQ	ppm	Carbamate insecticide
Azoxystrobin	0.100	0.2	< LOQ	ppm	
Bifenazate	0.100	0.2	< LOQ	ppm	Unclassified insecticide
Bifenthrin	0.100	0.2	< LOQ	ppm	
Boscalid	0.200	0.4	< LOQ	ppm	Anilide fungicide
Carbaryl	0.100	0.2	< LOQ	ppm	Carbamate insecticide
Carbofuran	0.100	0.2	< LOQ	ppm	Carbamate insecticide
Chlorantraniliprole	0.100	0.2	< LOQ	ppm	Anthranilic diamide insecticide
Chlorfenapyr	0.500	1	< LOQ	ppm	Pyrazole insecticide
Chlorpyrifos	0.100	0.2	< LOQ	ppm	Organophosphate insecticide
Clofentezine	0.100	0.2	< LOQ	ppm	
Cyfluthrin	0.500	1	< LOQ	ppm	
Cypermethrin	0.500	1	< LOQ	ppm	
Daminozide	0.500	1	< LOQ	ppm	
DDVP (Dichlorvos)	0.500	1	< LOQ	ppm	
Diazinon	0.100	0.2	< LOQ	ppm	Organophosphate insecticide
Dimethoate	0.100	0.2	< LOQ	ppm	
Ethoprophos	0.100	0.2	< LOQ	ppm	
Etofenprox	0.200	0.4	< LOQ	ppm	
Etoxazole	0.100	0.2	< LOQ	ppm	Unclassified miticide
Fenoxycarb	0.100	0.2	< LOQ	ppm	
Fenpyroximate	0.200	0.4	< LOQ	ppm	
Fipronil	0.200	0.4	< LOQ	ppm	Pyrazole insecticide
Fonicamid	0.500	1	< LOQ	ppm	Pyridinecarboxamide insecticide
Fludioxonil	0.200	0.4	< LOQ	ppm	non-systemic fungicide
Hexythiazox	0.500	1	< LOQ	ppm	
Imazalil	0.100	0.2	< LOQ	ppm	Azole fungicide
Imidacloprid	0.200	0.4	< LOQ	ppm	Neonicotinoid insecticide
Kresoxim-methyl	0.200	0.4	< LOQ	ppm	
Malathion	0.100	0.2	< LOQ	ppm	
Metalaxyl	0.100	0.2	< LOQ	ppm	
Methiocarb	0.100	0.2	< LOQ	ppm	Carbamate insecticide



Stephanie Moon
 Laboratory Director - 3/17/2020

EVIO Labs Medford (pka Kenevir Research)
 540 East Vilas Road, Suite F, Central Point, OR 97502
 541-668-7444 / OLCC 010-1001626980D / www.EVIOLabs.com

FOR INFORMATIONAL USE ONLY - NOT FOR REGULATORY PURPOSES

Purple Fields Tonic

Fields of Hemp
 Informational Use Only

Sample ID: M200424-01

METRC Batch #:

Matrix: Hemp

Date Sampled: NA

Date Accepted: 03/09/20

Batch ID:

Batch Size:

Sampling Method/SOP: Client

Pesticides

Date/Time Extracted: 03/09/20 09:43

Date/Time Analyzed: 3/9/2020 11:19:02PM

Analysis Method/SOP: SOP.T.40.050 / SOP.T.40.051

Analyte	LOQ	Action Level	Result	Units	Type
Methomyl	0.200	0.4	< LOQ	ppm	Carbamate insecticide
Methyl parathion	0.100	0.2	< LOQ	ppm	
MGK-264	0.100	0.2	< LOQ	ppm	
Myclobutanil	0.100	0.2	< LOQ	ppm	Azole fungicide
Naled	0.250	0.5	< LOQ	ppm	
Oxamyl	0.500	1	< LOQ	ppm	Carbamate insecticide
Paclobutrazol	0.200	0.4	< LOQ	ppm	Azole plant growth regulator
Permethrins	0.100	0.2	< LOQ	ppm	
Phosmet	0.100	0.2	< LOQ	ppm	Organophosphate insecticide
Piperonyl butoxide	1.00	2	< LOQ	ppm	
Prallethrin	0.100	0.2	< LOQ	ppm	
Propiconazole	0.200	0.4	< LOQ	ppm	
Propoxur	0.100	0.2	< LOQ	ppm	Carbamate insecticide
Pyrethrins	0.500	1	< LOQ	ppm	
Pyridaben	0.100	0.2	< LOQ	ppm	Unclassified insecticide
Spinosad	0.100	0.2	< LOQ	ppm	Spinosyn insecticide
Spiromesifen	0.100	0.2	< LOQ	ppm	Keto-enol insecticide
Spirotetramat	0.100	0.2	< LOQ	ppm	Keto-enol insecticide
Spiroxamine	0.200	0.4	< LOQ	ppm	Unclassified fungicide
Tebuconazole	0.200	0.4	< LOQ	ppm	
Thiacloprid	0.100	0.2	< LOQ	ppm	
Thiamethoxam	0.100	0.2	< LOQ	ppm	Neonicotinoid insectide
Trifloxystrobin	0.100	0.2	< LOQ	ppm	Strobin fungicide

Results above the action level fail Oregon state testing requirements and will be highlighted **RED**.

LOQ= Limit of Quantitation; PPM= Parts per million; ND= Not detected; NT= Not tested; AC= Above calibration range. PASS/FAIL status based on OAR 333-007.



Stephanie Moon
 Laboratory Director - 3/17/2020

EVIO Labs Medford (pka Kenevir Research)
540 East Vilas Road, Suite F, Central Point, OR 97502
541-668-7444 / OLCC 010-1001626980D / www.EVIOLabs.com

Quality Control

Batch: M20C043 - SOP.T.30.060 Pesticide Prep

Blank(M20C043-BLK1)			Extracted: 03/09/20 08:43		Analyzed: 03/09/20 16:32		
Analyte	Result	LOQ	Recovery Limits	Analyte	Result	LOQ	Recovery Limits
Methyl parathion	< LOQ	0.100 (ppm)	< LOQ	MGK-264	< LOQ	0.100 (ppm)	< LOQ
Chlorfenapyr	< LOQ	0.500 (ppm)	< LOQ	Cyfluthrin	< LOQ	0.500 (ppm)	< LOQ
Cypermethrin	< LOQ	0.500 (ppm)	< LOQ	Abamectin	< LOQ	0.250 (ppm)	< LOQ
Acephate	< LOQ	0.200 (ppm)	< LOQ	Acequinocyl	< LOQ	1.00 (ppm)	< LOQ
Acetamiprid	< LOQ	0.100 (ppm)	< LOQ	Aldicarb	< LOQ	0.200 (ppm)	< LOQ
Azoxystrobin	< LOQ	0.100 (ppm)	< LOQ	Bifenazate	< LOQ	0.100 (ppm)	< LOQ
Bifenthrin	< LOQ	0.100 (ppm)	< LOQ	Boscalid	< LOQ	0.200 (ppm)	< LOQ
Carbaryl	< LOQ	0.100 (ppm)	< LOQ	Carbofuran	< LOQ	0.100 (ppm)	< LOQ
Chlorantraniliprole	< LOQ	0.100 (ppm)	< LOQ	Chlorpyrifos	< LOQ	0.100 (ppm)	< LOQ
Clofentezine	< LOQ	0.100 (ppm)	< LOQ	Daminozide	< LOQ	0.500 (ppm)	< LOQ
DDVP (Dichlorvos)	< LOQ	0.500 (ppm)	< LOQ	Diazinon	< LOQ	0.100 (ppm)	< LOQ
Dimethoate	< LOQ	0.100 (ppm)	< LOQ	Ethoprophos	< LOQ	0.100 (ppm)	< LOQ
Etofenprox	< LOQ	0.200 (ppm)	< LOQ	Etoxazole	< LOQ	0.100 (ppm)	< LOQ
Fenoxycarb	< LOQ	0.100 (ppm)	< LOQ	Fenpyroximate	< LOQ	0.200 (ppm)	< LOQ
Fipronil	< LOQ	0.200 (ppm)	< LOQ	Flonicamid	< LOQ	0.500 (ppm)	< LOQ
Fludioxonil	< LOQ	0.200 (ppm)	< LOQ	Hexythiazox	< LOQ	0.500 (ppm)	< LOQ
Imazalil	< LOQ	0.100 (ppm)	< LOQ	Imidacloprid	< LOQ	0.200 (ppm)	< LOQ
Kresoxim-methyl	< LOQ	0.200 (ppm)	< LOQ	Malathion	< LOQ	0.100 (ppm)	< LOQ
Metalaxyl	< LOQ	0.100 (ppm)	< LOQ	Methiocarb	< LOQ	0.100 (ppm)	< LOQ
Methomyl	< LOQ	0.200 (ppm)	< LOQ	Myclobutanil	< LOQ	0.100 (ppm)	< LOQ
Naled	< LOQ	0.250 (ppm)	< LOQ	Oxamyl	< LOQ	0.500 (ppm)	< LOQ
Paclobutrazol	< LOQ	0.200 (ppm)	< LOQ	Permethrins	< LOQ	0.100 (ppm)	< LOQ
Phosmet	< LOQ	0.100 (ppm)	< LOQ	Piperonyl butoxide	< LOQ	1.00 (ppm)	< LOQ
Prallethrin	< LOQ	0.100 (ppm)	< LOQ	Propiconazole	< LOQ	0.200 (ppm)	< LOQ
Propoxur	< LOQ	0.100 (ppm)	< LOQ	Pyridaben	< LOQ	0.100 (ppm)	< LOQ
Pyrethrins	< LOQ	0.500 (ppm)	< LOQ	Spinosad	< LOQ	0.100 (ppm)	< LOQ
Spiromesifen	< LOQ	0.100 (ppm)	< LOQ	Spirotetramat	< LOQ	0.100 (ppm)	< LOQ
Spiroxamine	< LOQ	0.200 (ppm)	< LOQ	Tebuconazole	< LOQ	0.200 (ppm)	< LOQ
Thiacloprid	< LOQ	0.100 (ppm)	< LOQ	Thiamethoxam	< LOQ	0.100 (ppm)	< LOQ
Trifloxystrobin	< LOQ	0.100 (ppm)	< LOQ				

LCS(M20C043-BS1)			Extracted: 03/09/20 08:43		Analyzed: 03/09/20 17:00		
Analyte	% Recovery	LOQ	Recovery Limits	Analyte	% Recovery	LOQ	Recovery Limits
Methyl parathion	126	0.100 (ppm)	50-150	MGK-264	91.0	0.100 (ppm)	50-150
Chlorfenapyr	88.5	0.500 (ppm)	50-150	Cyfluthrin	116	0.500 (ppm)	50-150
Cypermethrin	114	0.500 (ppm)	50-150	Abamectin	96.6	0.250 (ppm)	50-150
Acephate	120	0.200 (ppm)	50-150	Acequinocyl	66.1	1.00 (ppm)	50-150



Stephanie Moon
Laboratory Director - 3/17/2020

EVIO Labs Medford (pka Kenevir Research)
540 East Vilas Road, Suite F, Central Point, OR 97502
541-668-7444 / OLCC 010-1001626980D / www.EVIOLabs.com

Quality Control

Batch: M20C043 - SOP.T.30.060 Pesticide Prep (Continued)

LCS(M20C043-BS1)			Extracted: 03/09/20 08:43		Analyzed: 03/09/20 17:38		
Analyte	% Recovery	LOQ	Recovery Limits	Analyte	% Recovery	LOQ	Recovery Limits
Acetamiprid	122	0.100 (ppm)	50-150	Aldicarb	101	0.200 (ppm)	50-150
Azoxystrobin	107	0.100 (ppm)	50-150	Bifenazate	131	0.100 (ppm)	50-150
Bifenthrin	121	0.100 (ppm)	50-150	Boscalid	109	0.200 (ppm)	50-150
Carbaryl	117	0.100 (ppm)	50-150	Carbofuran	106	0.100 (ppm)	50-150
Chlorantraniliprole	124	0.100 (ppm)	50-150	Chlorpyrifos	114	0.100 (ppm)	50-150
Clofentezine	121	0.100 (ppm)	50-150	Daminozide	119	0.500 (ppm)	50-150
DDVP (Dichlorvos)	104	0.500 (ppm)	50-150	Diazinon	107	0.100 (ppm)	50-150
Dimethoate	117	0.100 (ppm)	50-150	Ethoprophos	95.5	0.100 (ppm)	50-150
Etofenprox	112	0.200 (ppm)	50-150	Etoxazole	112	0.100 (ppm)	50-150
Fenoxycarb	129	0.100 (ppm)	50-150	Fenpyroximate	121	0.200 (ppm)	50-150
Fipronil	87.5	0.200 (ppm)	50-150	Flonicamid	118	0.500 (ppm)	50-150
Fludioxonil	97.4	0.200 (ppm)	50-150	Hexythiazox	114	0.500 (ppm)	50-150
Imazalil	124	0.100 (ppm)	50-150	Imidacloprid	105	0.200 (ppm)	50-150
Kresoxim-methyl	121	0.200 (ppm)	50-150	Malathion	121	0.100 (ppm)	50-150
Metalaxyl	111	0.100 (ppm)	50-150	Methiocarb	118	0.100 (ppm)	50-150
Methomyl	112	0.200 (ppm)	50-150	Myclobutanil	124	0.100 (ppm)	50-150
Naled	138	0.250 (ppm)	50-150	Oxamyl	108	0.500 (ppm)	50-150
Paclobutrazol	115	0.200 (ppm)	50-150	Permethrins	107	0.100 (ppm)	50-150
Phosmet	125	0.100 (ppm)	50-150	Piperonyl butoxide	118	1.00 (ppm)	50-150
Prallethrin	111	0.100 (ppm)	50-150	Propiconazole	114	0.200 (ppm)	50-150
Propoxur	119	0.100 (ppm)	50-150	Pyridaben	115	0.100 (ppm)	50-150
Pyrethrins	114	0.500 (ppm)	50-150	Spinosad	108	0.100 (ppm)	50-150
Spiromesifen	108	0.100 (ppm)	50-150	Spirotetramat	113	0.100 (ppm)	50-150
Spiroxamine	112	0.200 (ppm)	50-150	Tebuconazole	114	0.200 (ppm)	50-150
Thiacloprid	113	0.100 (ppm)	50-150	Thiamethoxam	117	0.100 (ppm)	50-150
Trifloxystrobin	121	0.100 (ppm)	50-150				

Batch: M20C055 - SOP.T.30.050 Prep for Cannabinoids

Blank(M20C055-BLK1)			Extracted: 03/10/20 11:56		Analyzed: 03/10/20 19:07		
Analyte	Result	LOQ	Recovery Limits	Analyte	Result	LOQ	Recovery Limits
THCA	< LOQ	0.0400 (%)	< LOQ	delta 9-THC	< LOQ	0.0400 (%)	< LOQ
delta 8-THC	< LOQ	0.0400 (%)	< LOQ	THCV-A	< LOQ	0.0400 (%)	< LOQ
THCV	< LOQ	0.0400 (%)	< LOQ	CBDA	< LOQ	0.0400 (%)	< LOQ
CBD	< LOQ	0.0400 (%)	< LOQ	CBDV-A	< LOQ	0.0400 (%)	< LOQ
CBDV	< LOQ	0.0400 (%)	< LOQ	CBG	< LOQ	0.0400 (%)	< LOQ
CBGA	< LOQ	0.0400 (%)	< LOQ	CBN	< LOQ	0.0400 (%)	< LOQ
CBC	< LOQ	0.0400 (%)	< LOQ	Sum of tested Cannabinoids	< LOQ	0.0400 (%)	< LOQ



Stephanie Moon
Laboratory Director - 3/17/2020

EVIO Labs Medford (pka Kenevir Research)
540 East Vilas Road, Suite F, Central Point, OR 97502
541-668-7444 / OLCC 010-1001626980D / www.EVIOLabs.com

Quality Control

Batch: M20C055 - SOP.T.30.050 Prep for Cannabinoids (Continued)

LCS(M20C055-BS1)			Extracted: 03/10/20 11:56	Analyzed: 03/10/20 19:23			
Analyte	% Recovery	LOQ	Recovery Limits	Analyte	% Recovery	LOQ	Recovery Limits
THCA	106	(%)	70-130	delta 9-THC	100	(%)	70-130
CBDA	107	(%)	70-130	CBD	105	(%)	70-130

Batch: M20C059 - SOP.T.40.010 Moisture Content

Blank(M20C059-BLK1)			Extracted: 03/09/20 12:52	Analyzed: 03/09/20 12:52			
Analyte	Result	LOQ	Recovery Limits	Analyte	Result	LOQ	Recovery Limits
Percent Moisture	100	(%)	< LOQ				

Batch: P20C075 - SOP.T.40.092 PDX Terpenoid Analysis via GC-MS

Blank(P20C075-BLK1)			Extracted: 03/13/20 10:30	Analyzed: 03/16/20 11:16			
Analyte	Result	LOQ	Recovery Limits	Analyte	Result	LOQ	Recovery Limits
alpha-Pinene	< LOQ	0.200 (mg/g)	< LOQ	beta-Pinene	< LOQ	0.200 (mg/g)	< LOQ
Camphene	< LOQ	0.200 (mg/g)	< LOQ	Sabinene	< LOQ	0.200 (mg/g)	< LOQ
Sabinene hydrate	< LOQ	0.200 (mg/g)	< LOQ	beta-Myrcene	< LOQ	0.200 (mg/g)	< LOQ
p-Mentha-1,5-diene	< LOQ	0.200 (mg/g)	< LOQ	(+)-3-Carene	< LOQ	0.200 (mg/g)	< LOQ
alpha-Terpinene	< LOQ	0.200 (mg/g)	< LOQ	gamma-Terpinene	< LOQ	0.200 (mg/g)	< LOQ
Limonene	< LOQ	0.200 (mg/g)	< LOQ	Eucalyptol	< LOQ	0.200 (mg/g)	< LOQ
Guaiol	< LOQ	0.200 (mg/g)	< LOQ	Terpinolene	< LOQ	0.200 (mg/g)	< LOQ
Linalool	< LOQ	0.200 (mg/g)	< LOQ	Camphor	< LOQ	0.200 (mg/g)	< LOQ
(+)-Camphor	< LOQ	0.200 (mg/g)	< LOQ	(-)-Camphor	< LOQ	0.200 (mg/g)	< LOQ
Isopulegol	< LOQ	0.200 (mg/g)	< LOQ	Isoborneol	< LOQ	0.200 (mg/g)	< LOQ
Borneol	< LOQ	0.200 (mg/g)	< LOQ	Hexahydrothymol	< LOQ	0.200 (mg/g)	< LOQ
Geraniol	< LOQ	0.200 (mg/g)	< LOQ	(+)-Pulegone	< LOQ	0.200 (mg/g)	< LOQ
Nerol	< LOQ	0.200 (mg/g)	< LOQ	cis-Nerolidol	< LOQ	0.200 (mg/g)	< LOQ
trans-Nerolidol	< LOQ	0.200 (mg/g)	< LOQ	Geranyl acetate	< LOQ	0.200 (mg/g)	< LOQ
alpha-Cedrene	< LOQ	0.200 (mg/g)	< LOQ	trans-Caryophyllene	< LOQ	0.200 (mg/g)	< LOQ
Caryophyllene Oxide	< LOQ	0.200 (mg/g)	< LOQ	alpha-Humulene	< LOQ	0.200 (mg/g)	< LOQ
Valencene	< LOQ	0.200 (mg/g)	< LOQ	alpha-Farnesene	< LOQ	0.200 (mg/g)	< LOQ
beta-Farnesene	< LOQ	0.200 (mg/g)	< LOQ	Cedrol	< LOQ	0.200 (mg/g)	< LOQ
alpha-Bisabolol	< LOQ	0.200 (mg/g)	< LOQ	Fenchone	< LOQ	0.200 (mg/g)	< LOQ
Fenchyl Alcohol	< LOQ	0.200 (mg/g)	< LOQ	trans, beta- Ocimene	< LOQ	0.200 (mg/g)	< LOQ
beta, cis- Ocimene	< LOQ	0.200 (mg/g)	< LOQ	Terpineol	< LOQ	0.200 (mg/g)	< LOQ



Stephanie Moon
Laboratory Director - 3/17/2020